

CHANGE ORDER NO. 6



Date: July 19, 2016

To Contractor: Stronghold Engineering, Inc.
2000 Market Street, Riverside, CA 92501

Project: Monterey Conference Center Renovation Project, #30C1453
Including Portola Plaza Renovation Project, #30C1601

Permit No.: B15-0397 and B15-0188

Description of Change: Refer to attached RFPs for additional information.

ITEM NO.	DESCRIPTION	SEI CP	CHANGE IN CONTRACT PRICE	CHANGE IN CONTRACT TIME
1.	<p>RFP-037, dated 6/22/16: Reinforce Gridline K for Best Fit Grid Shift by increasing thickness of post-tensioned concrete girder by 1'-0".</p> <p>Requested by: Stronghold Engineering, Inc. Reason: To make the best-fit-grid work with the most recent girder survey provided in RFI-298, the gravity beam on gridline "K" increased in size. There is a potential disagreement regarding the change as described by SEI, and the City reserves its right to challenge the characterization and pricing of this change pursuant to Section 9.13 of the Contract. As set forth below, the City of Monterey reserves all rights it may have under the Contract, law, or equity to assert claims and/or defenses related to schedule adjustments and/or additional compensation for all delays, changes, and costs resulting from, or associated with, Change Order No. 6.</p>	042R1	\$94,307.00	0 Days
2.	<p>Added Scanning for Baseplate Configuration</p> <p>Requested by: Stronghold Engineering, Inc. Reason: Through the scanning process, SEI discovered tendons running at various locations creating a two-way post-tension slab. In order to fit the baseplate anchors between the two-way post tension cables and slab rebar additional scanning, field surveying, and coordination with the structural engineers on workable solutions was necessary. There is a potential disagreement regarding the change as described by SEI, and the City reserves its right to challenge the characterization and pricing of this change pursuant to Section 9.13 of the Contract. As set forth below, the City of Monterey reserves all rights it may have under the Contract, law, or equity, to assert claims and/or defenses related</p>	028R1	\$99,051.00	0 Days

Change Order No. 6

Monterey Conference Center Renovation Project | #30C1453

Including Portola Plaza Renovation Project | #30C1601

to schedule adjustments and/or additional compensation for all delays, changes, and costs resulting from, or associated with, Change Order No. 6.

3.	Global Abatement Settlement of All Outstanding Abatement Issues. Does not include additional concrete slab cut work or any unidentified ACM. Requested by: Stronghold Engineering, Inc. Reason:	043	\$99,818.00	0 Days
----	---	-----	-------------	--------

Summary of Contract Price

Original Contract Amount	\$46,287,000.00
Prior Adjustments	\$558,986.00
Contract Sum Prior to this Change	\$46,845,986.00
Adjustments for this Change	\$293,176.00
Revised Contract Amount	\$47,139,162.00

Summary of Contract Time (All time is represented as CALENDAR Days)

Revised Contract Time (single delivery)	474 Days	Date: 03/24/2017
Adjustments for this Change	0 Days	
Revised Contract Time (single delivery)	474 Days	Date: 03/24/2017

Regarding Items No. 1 and 2 only, Stronghold Engineering, Inc. and the City of Monterey have certain disputes regarding the characterization of requested changes, scheduling, delays, and costs. Without resolving such disputes, the parties desire to continue working together to complete the Project and intend to resolve such disputes at a later date pursuant to Section 9.13 of the Contract. By executing Change Order No. 6, neither Stronghold Engineering, Inc. nor the City of Monterey waive or relinquish any rights they may have under the Contract, law, or equity with respect to those disputes, or how they may impact scheduling, delays, and associated costs with respect to Change Order No. 6. Stronghold Engineering, Inc. and the City of Monterey reserve all rights they may have under the Contract, law, or equity to assert claims and/or defenses related to the characterization of the requested changes, schedule adjustments and/or additional compensation for all delays, changes, and costs resulting from, or associated with, Change Order No. 6.


Regarding Item No. 3 only, the Contractor waives any claim for further adjustments of the Contract Sum and Contract Time related to items contained in the Change Order. This Change Order is complete accord and satisfaction for all items included in this Change Order. Also refer to Article 9 of the General Conditions.

Additionally, regarding Item No. 3 only, the foregoing adjustment of the Contract Price and the Contract Time for the changes noted in this Change Order (the "Changes") represents the full and complete adjustment of the Contract Price and the Contract Time due the Contractor for providing and completing such Changes, including without limitation: (i) all costs (whether direct or indirect) for labor, equipment, materials, tools, supplies and/or services; (ii) all general and administrative overhead costs (including without limitation, home office, field office and Site general conditions costs) and profit; and (iii) all impacts, delays, disruptions, interferences, or hindrances in providing and completing the Changes. The Contractor waives all rights, including without limitation those arising under Civil Code Section 1542, for any other adjustment of the Contract Price or the Contract Time on account of this Change Order or the performance and completion of the Changes.

Change Order No. 6

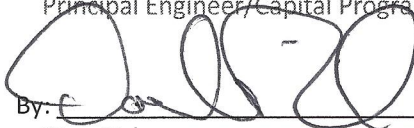
Monterey Conference Center Renovation Project | #30C1453
Including Portola Plaza Renovation Project | #30C1601

Reviewed and Recommended for Approval
Ausonio Incorporated, Construction Manager


By:  9/23/16
Samuel Phillips Date
Program Manager

Owner Approval
City of Monterey

By:  9/27/2016
Robert Harary, P.E. Date
Principal Engineer/Capital Programs Manager

By:  10/4/16
Dino Pick Date
Deputy City Manager, Plans and Public Works

Contractor Acceptance
Stronghold Engineering, Inc.

By:  09/20/2016
Beverly Bailey Date
President & CEO

Attachments: RFP-037

Distribution: City of Monterey
Skidmore, Owings & Merrill, LLP

PROPOSAL REQUEST

To Contractor: Stronghold Engineering, Inc.
2000 Market Street
Riverside, CA 92501
Attn: Denny McGahey

Proposal Request No. 037
Date Issued: 6/23/2016

Project: Monterey Conference Center Renovation Project #30CP1453
Including Portola Plaza Renovation Project #30C1601

Permit Number: B15-0397 and B15-0188

Copy to: Scott Bailey – Stronghold Steve Davis - Stronghold
Tim Jakell – Stronghold Robert Harary – City of Monterey
Paul Nellany – Stronghold Sam Phillips – Ausonio
Kai Broms - SOM

The following change is being considered for the Project. Please provide a Cost Proposal for any changes in Contract Sum and/or Contract Time to perform the work described below in accordance with Article 9 of the General Conditions. Cost Proposal shall be submitted on the Owner's form, reference Appendix D of the Contract Documents.

THIS IS NOT A CHANGE ORDER OR A DIRECTION TO PROCEED WITH THE WORK DESCRIBED HEREIN.

Description of Work Requested

Subject: Reinforce Gridline "K" for the "Best Fit Grid" Control Point Shift

Contract Reference: Detail 1 on Sheet S3.21

The City requests your cost proposal to reinforce gridline "K" per the attached RFI-298 revised response dated 6/14/16 to incorporate the shift in the "Best Fit Grid."

The work shown along gridline 8 between gridlines J.5 and M on the attached RFI is no longer needed; do not incorporate this work into the pricing.

It is unknown if these additional structural upgrade requirements are only necessary because of unforeseen field conditions. The City retains its right to determine the cause of the "Best Fit Grid" shift that resulted in the reinforcing of gridline "K."

Attachments: RFI-298 revised response dated 6/14/16


Dustin Conner
Project Manager

6/23/16



STRONGHOLD ENGINEERING, INC.

STRUCTURAL

2000 Market Street
Riverside, CA 92501
(951) 684-9303 - FAX (951) 684-3813

PROJECT NO.: 15-013
CONTRACT NO.: 30C1453/30C1601

REQUEST FOR INFORMATION

Received 5/25/16

RFINO.: 298
DATE: 5/24/16

TO: Ausonio Incorporated
11420 A commercial parkway
Castroville, Ca. 95012

PROJECT: Monterey conference center
One portola plaza Monterey ca.
93940

ATTN: Dustin Conner

FROM: Stronghold Engineering

REFERENCE: S0.01

LOCATION: Construction Drawings

DESCRIPTION: Existing condition in relationship to best fit grid

See attached existing condition in relationship to best fit grid.

Please advice

SCHEDULE IMPACT Depending on Response FINANCIAL IMPACT Depending on Response ATTACHMENTS

RESPONSE NEEDED BY: DATE: ASAP

REPLY: **See response on the following page.**

(SIGNATURE) **Samantha Walker** (TITLE) **SOM/PE 06/08/2016**

If the initiator disagrees with the response or believes that the response creates a change in scope affecting contract costs or time, the initiator shall respond in writing in accordance with the contract.

RFI 298 - SOM RESPONSE

06/08/2016

Revised 06/14/2016

-Contractor to clearly indicate the location of the proposed control point for the layout of the best fit grid that yields the existing structure offsets provided in this RFI. Based on these existing structure offsets, the following structural elements will need to be reinforced:

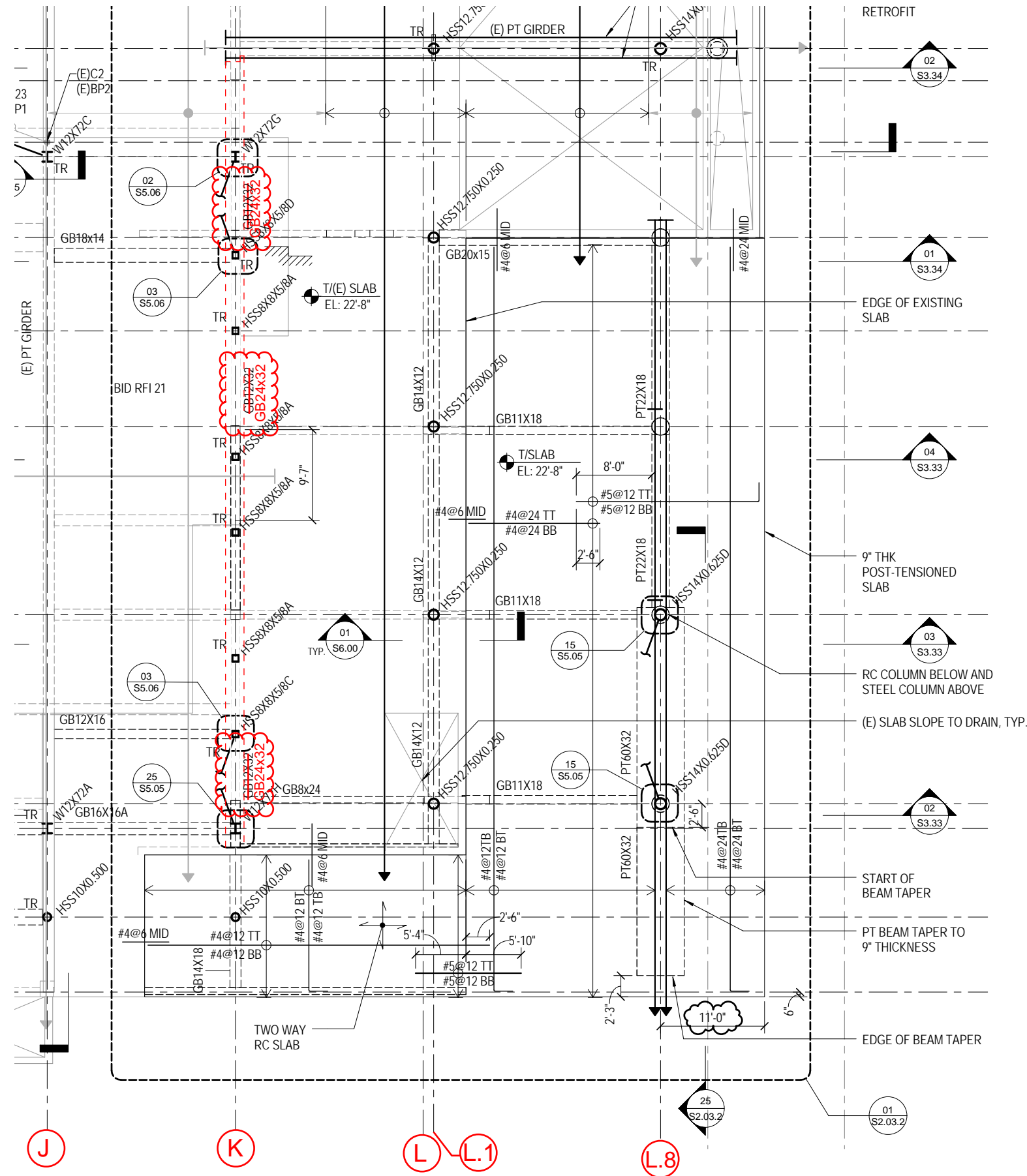
1. The new RC beam at Level 2 along grid line K between approximately grid lines 2.7 to 7.
2. The south end of the existing RC wall to remain along grid line K near grid line 6.8.
3. The existing PT girder at Level 2 along grid line 8 between approximately grid lines J.5 and M.

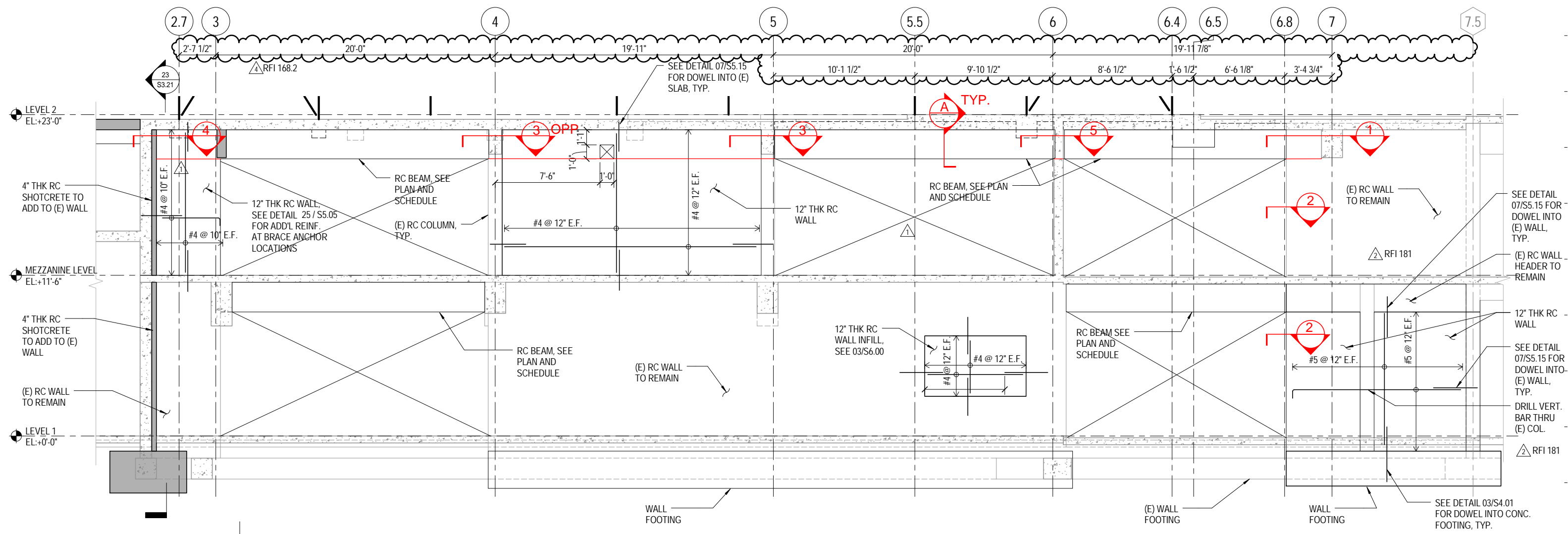
These reinforcements are illustrated in SSK 030.1, 030.2, 030.3R.1, 030.4R.1, 030.5R.1, 030.6R.1, 030.7R.1 and 030.8 below.

Also, refer to additional comments below on the reproduction of S0.01 showing existing structure offsets.

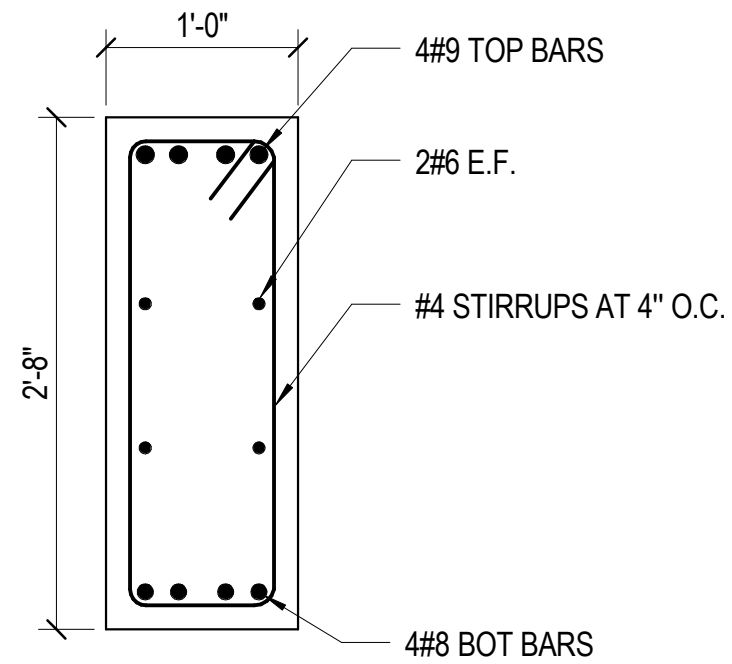
-Regarding the as-built elevations provided in this RFI, Contractor to verify that the information provided in SOM's response to RFI 210 is still applicable given the revised slab elevations. If there are locations where SOM's response to RFI 210 is not applicable, Contractor to submit an RFI regarding these specific locations.

-Regarding the as-built information for the steel superstructure near grid lines J/8 provided below, Contractor to provide thickness of the existing HSS columns so that the reinforcement schemes for the existing columns at this location can be revised as required.

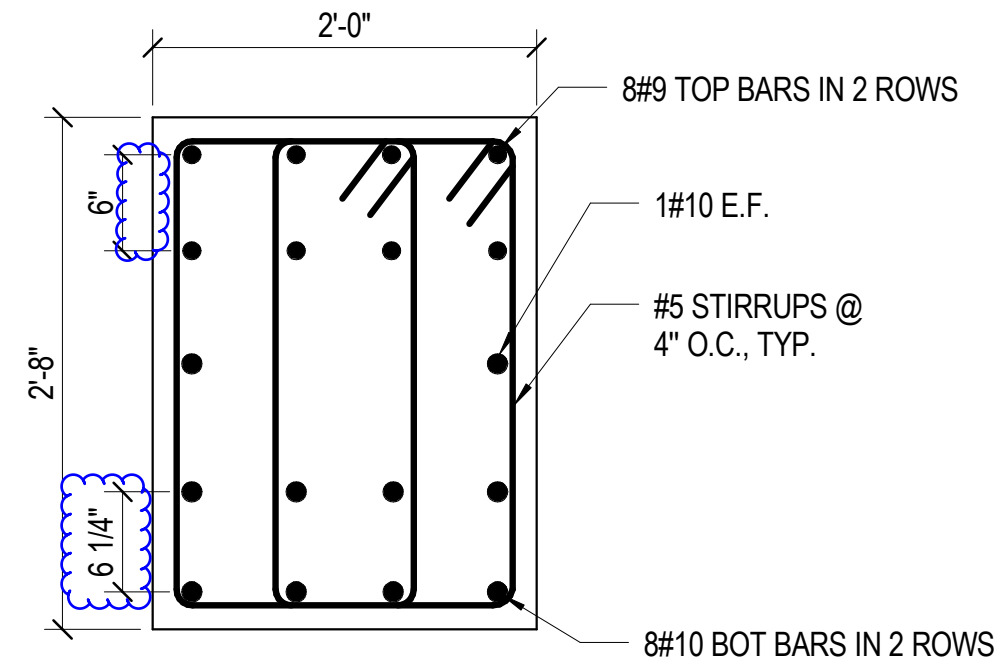




WALL ELEVATION ALONG LINE K **01**

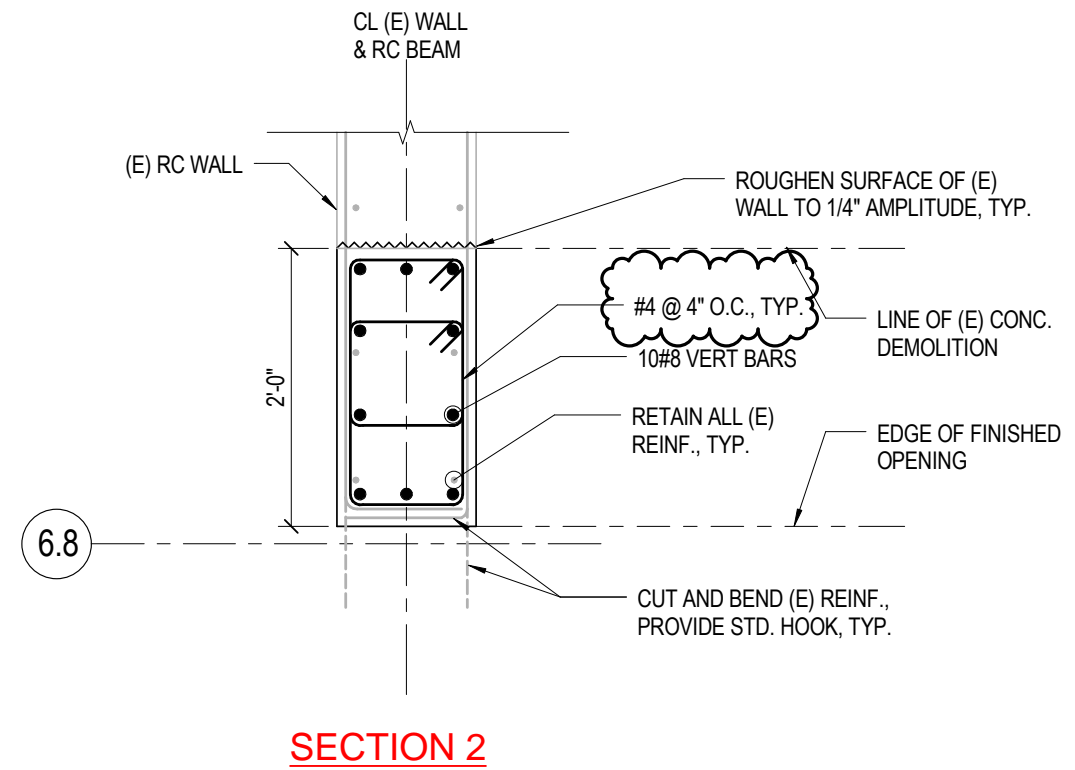
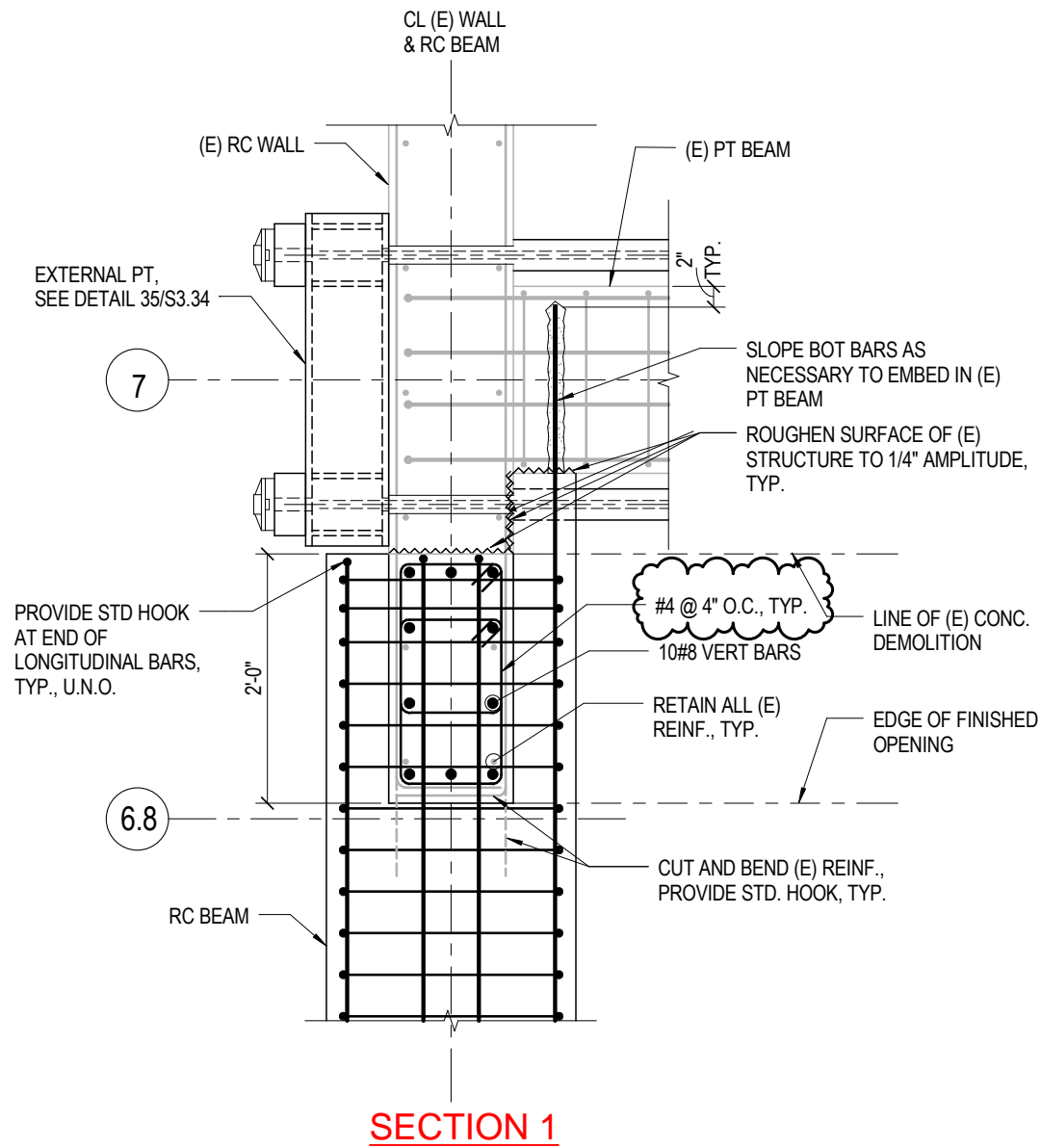


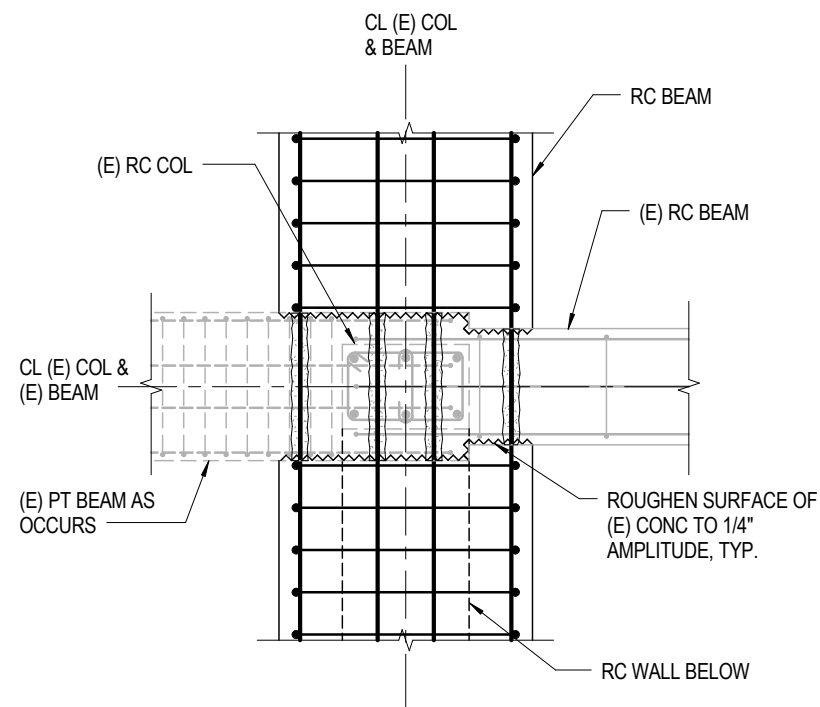
ORIGINAL DESIGN



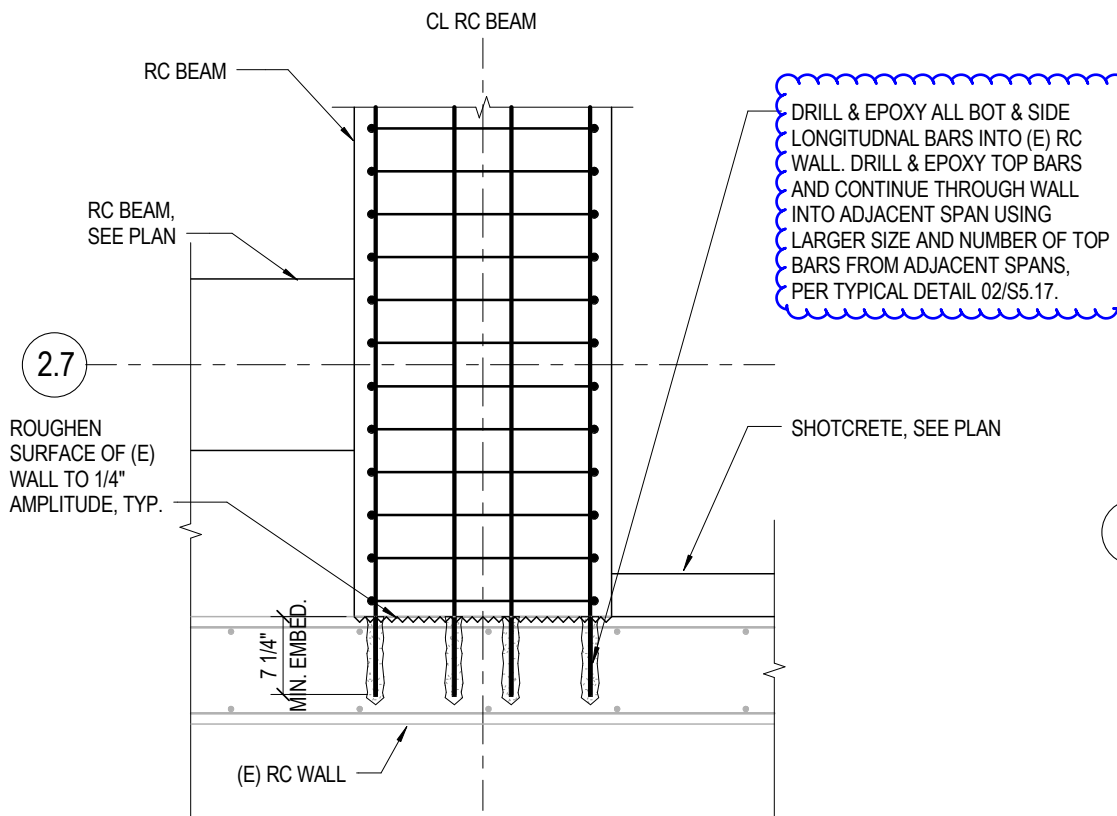
REVISED DESIGN

SECTION A



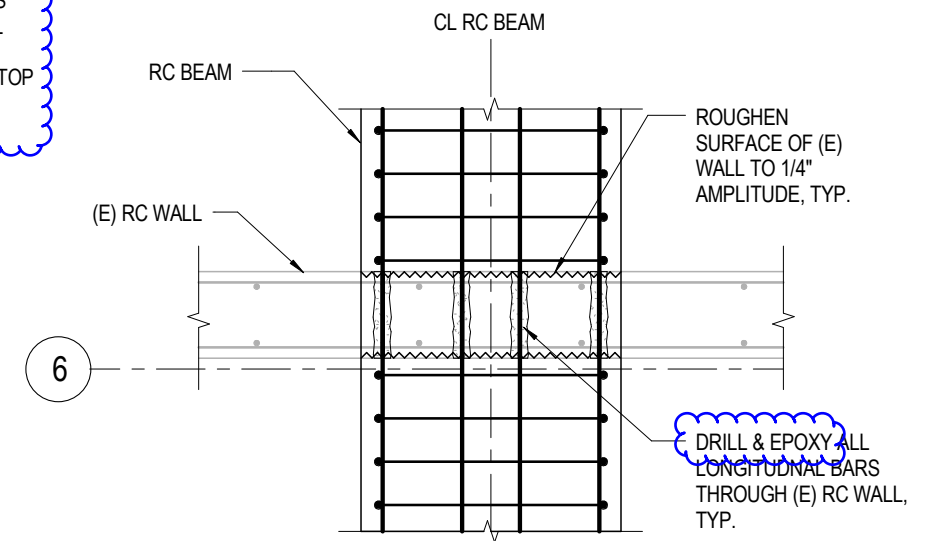


SECTION 3



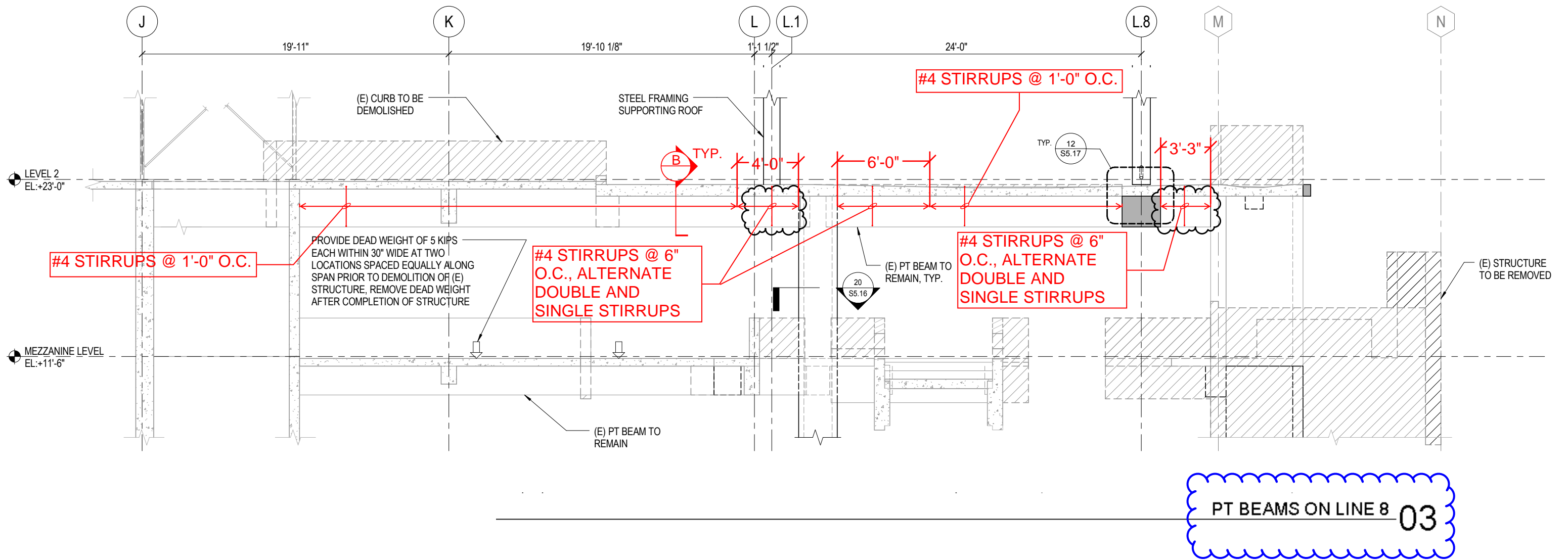
SECTION 4

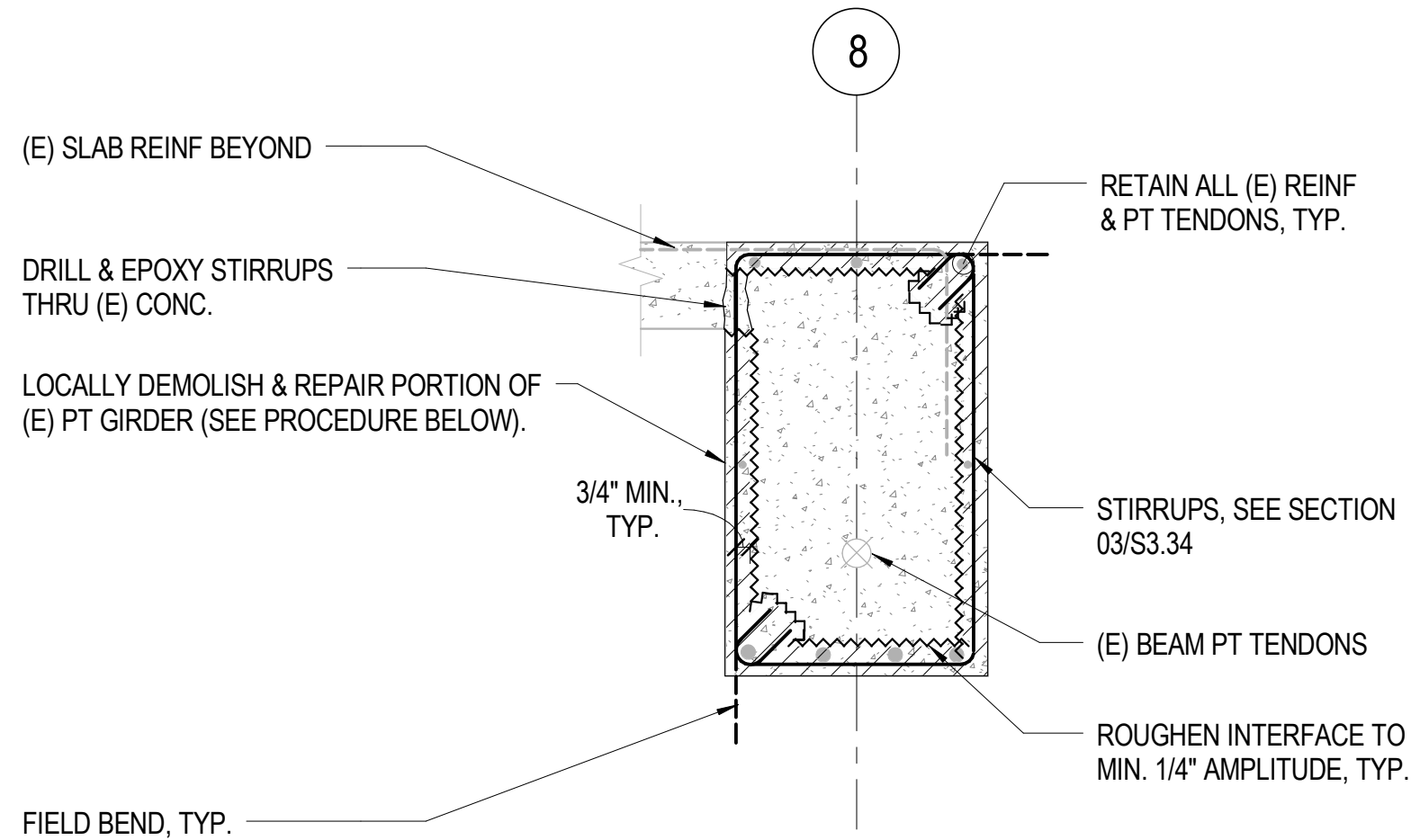
DRILL & EPOXY ALL BOT & SIDE LONGITUDNAL BARS INTO (E) RC WALL. DRILL & EPOXY TOP BARS AND CONTINUE THROUGH WALL INTO ADJACENT SPAN USING LARGER SIZE AND NUMBER OF TOP BARS FROM ADJACENT SPANS, PER TYPICAL DETAIL 02/S5.17.



SECTION 5

DRILL & EPOXY ALL LONGITUDNAL BARS THROUGH (E) RC WALL, TYP.





PROCEDURE:

1. LOCALLY DEMOLISH PORTION OF (E) PT GIRDER AT EVERY THIRD STIRRUP LOCATION.
2. INSTALL EVERY THIRD STIRRUP.
3. APPLY SIMPSON FX792LPL BONDING AGENT + SIMPSON FX-261S REPAIR MORTAR TO RESTORE (E) PT GIRDER TO ITS ORIGINAL CONDITION OR BETTER. FOLLOW MANUFACTURER'S SPECIFICATIONS & APPLICATION INSTRUCTIONS REGARDING BONDING AGENT + REPAIR MORTAR. EQUIV PRODUCTS MAY BE USED CONTINGENT ON APPROVAL BY ENGR.
4. WAIT FOR THE COMPRESSIVE STRENGTH OF THE REPAIR MORTAR TO REACH THAT OF THE EXISTING CONCRETE AND THEN REPEAT THE PROCEDURE ABOVE FOR THE SECOND SET OF EVERY THIRD STIRRUP AND THEN FOR THE FINAL SET OF EVERY THIRD STIRRUP.

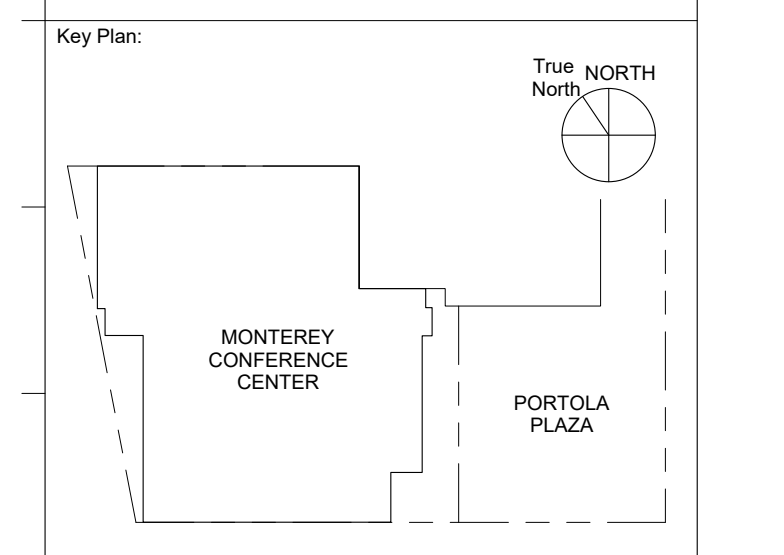
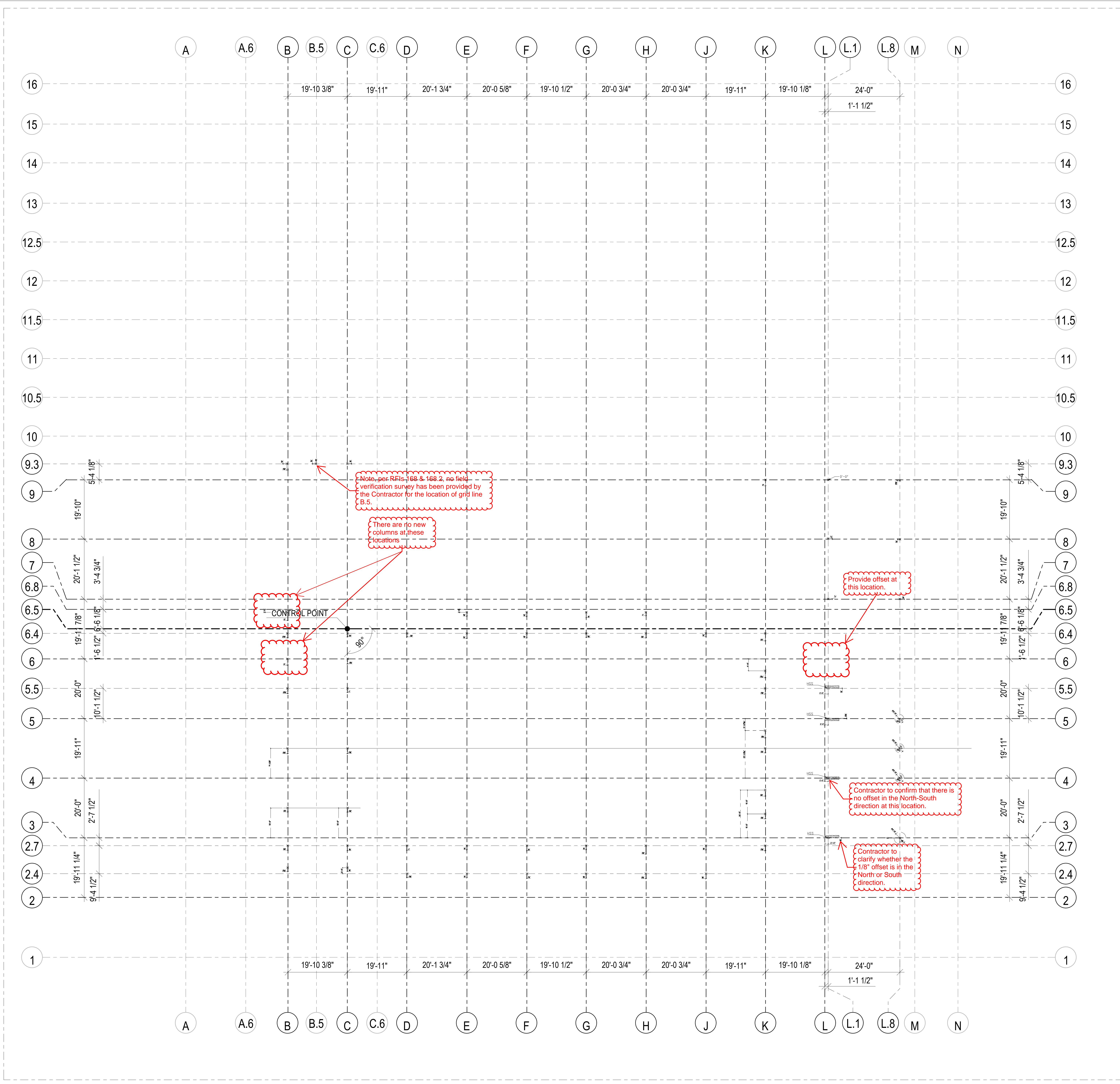
SECTION B

REINFORCED CONCRETE GRAVITY BEAM SCHEDULE

MARK	SIZE		REINFORCEMENT					STIRRUPS AT ENDS			STIRRUPS AT MIDDLE THIRD			LONGITUDINAL BAR EMBEDMENT DEPTH IN (E) CONC.	REMARKS
	W (in.)	H (in.)	TOP BARS			BOTTOM BARS CONTINUOUS	SIDE BARS (EACH FACE)	SIZE	TYPE	SPACING (in.)	SIZE	TYPE	SPACING (in.)		
			ADD'L MARK SIDE	ADD'L OPP. SIDE	CONTINUOUS										
GB8x24	8"	24"	-	-	2 - #8	2 - #8	1 - #5	#3	A	5"	#3	A	6"	6"	-

Monterey Conference Center
 San Francisco, CA
 Skidmore, Owings & Merrill LLP
 San Francisco, California 94111

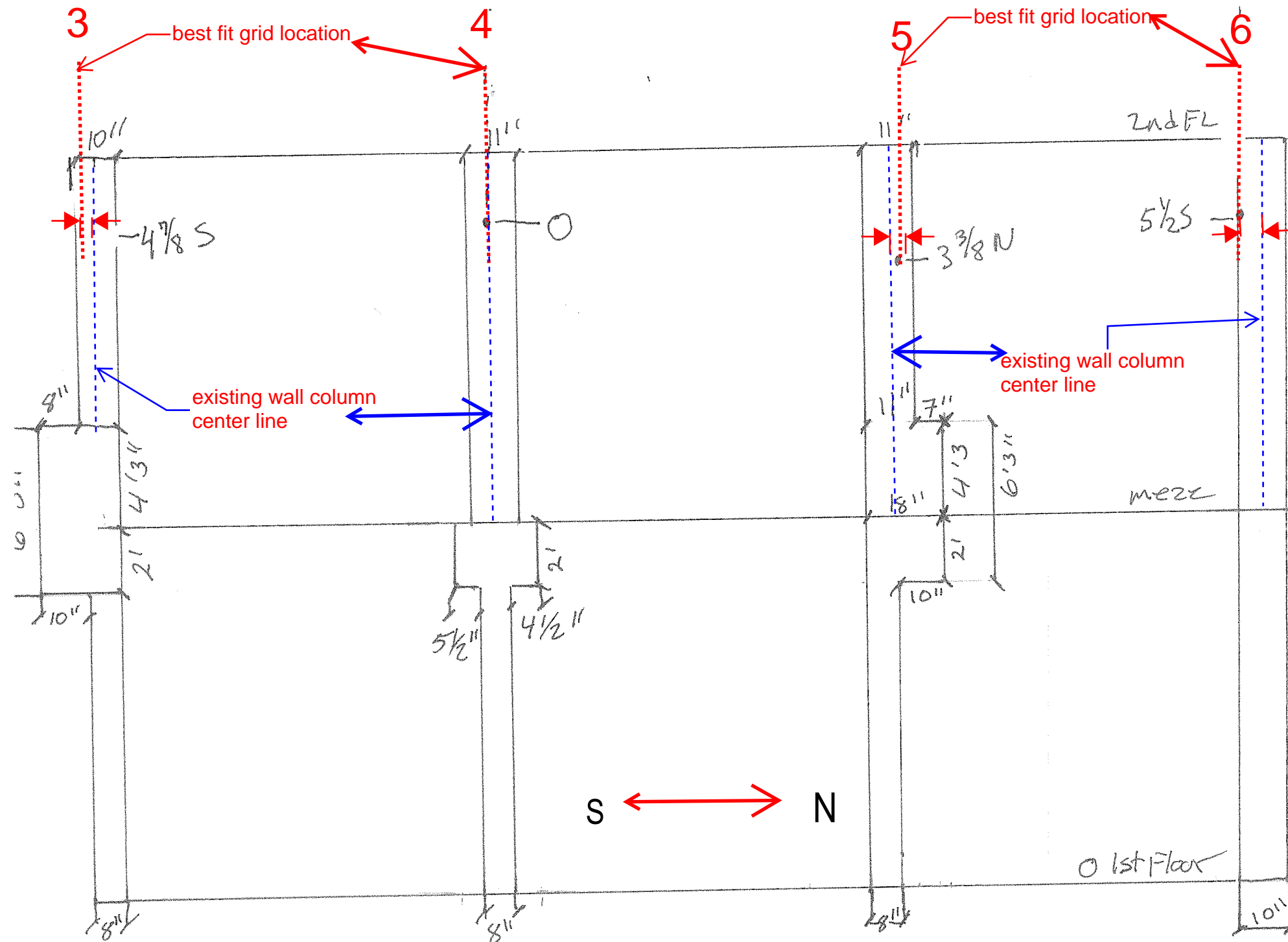
Job No.	215004	Scale	N.T.S.
Drawn By	S.W.	Date	06/13/2016
Sheet No.	S5.17	SSK-030.8	



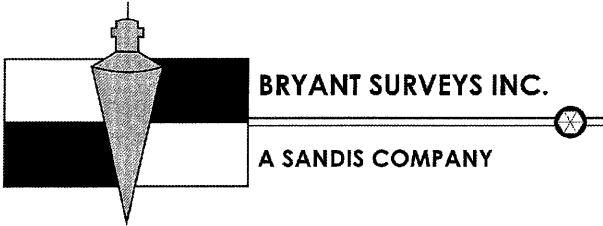
Seal & Signature:

Sheet Name:
**RATIONALIZED
BEST-FIT
REFERENCE
GRID**

Project No.: 210001
Drawn By: TEAM
Checked By: LEAD
Scale: 1/16" = 1'-0"
Sheet No.: **S0.01**



Elevation of L.1 from Grid Lines 3-6



DATE: 5/18/2016
TIME: 6:12 AM

5117 Johnson Drive
Pleasanton CA. 94588
925.301.1444

TRANSMITTAL

TO THE ATTENTION OF: Sal

COMPANY: Delta Ironworks

SUBJECT: Monterey Convention Center

WE ARE TRANSMITTING (THIS PAGE IS PAGE ONE OF 5 PAGES) VIA

FIRST CLASS MAIL PERSONAL DELIVERY

Email EMAIL ADDRESS BEING SENT TO: _____

OTHER: _____

REMARKS: I have changed many of the floor elevations now that the walls are removed near the columns. These elevations are on the higher floor.

BY: Bob Bryant ▼

BSI Job No. 3607

ADDED/REVISED ELEVATIONS

MONTEREY CONV CTR AS-BUILT (5-16-16)

FILE NAME=A:\3607\A3CONTAINS 100 PT.S DATE=05-17-2016 TIME=03:41:56

 Pt.# N/S DIST E/W DIST ELEVATION (FLOOR) DESCRIPTION

Pt.#	N/S DIST	E/W DIST	ELEVATION	(FLOOR)	DESCRIPTION
1	2' 0" N	IN LIMITS	22' 7-1/4"		B - 2.4
2	IN LIMITS	IN LIMITS	22' 6-3/4"		B - 2.7
3	IN LIMITS	IN LIMITS	22' 6-3/4"		B - 3.5
4	IN LIMITS	IN LIMITS	22' 11-1/2"		B - 4.5
5	IN LIMITS	IN LIMITS	22' 11-1/2"		B - 5.5
6	IN LIMITS	IN LIMITS	23' 0-1/8"		B - 6.4
7	IN LIMITS	0' 1-1/4" W	27' 0"		B - 6.8
8	0' 0-5/8" N	0' 1-3/4" W	27' 2-5/8"	(22' 11")	B - 7.5
9	IN LIMITS	0' 0-1/2" W	26' 8-7/8"	(22' 11")	B - 8
10	0' 1" N	9' 10-3/8" E	26' 9"	(22' 11-1/8")	B - 8
11	0' 0-1/2" S	IN LIMITS	27' 9-5/8"	(22' 11")	C - 8
12	0' 0-3/8" N	IN LIMITS	27' 1"	(22' 10-3/4")	C - 7.5
13	IN LIMITS	IN LIMITS	27' 3-3/8"		C - 6.8
14	IN LIMITS	7' 11-3/4" W	23' 2-5/8"		C - 6.8
15	IN LIMITS	IN LIMITS	22' 11-3/8"		C - 6.4
16	IN LIMITS	IN LIMITS	22' 11-1/4"		C - 5.5
17	IN LIMITS	IN LIMITS	22' 10-5/8"		C - 4.5
18	IN LIMITS	IN LIMITS	22' 11-1/2"		C - 3.5
19	IN LIMITS	IN LIMITS	22' 6"		C - 2.7
20	2' 0" N	8' 0" W	22' 6-1/2"		C - 2.4
21	2' 0" N	IN LIMITS	22' 5-7/8"		C - 2.4
22	IN LIMITS	IN LIMITS	22' 6-3/8"		D - 2.4
23	IN LIMITS	IN LIMITS	22' 6-5/8"		E - 2.4
24	IN LIMITS	IN LIMITS	22' 6-3/4"		F - 2.4
25	IN LIMITS	IN LIMITS	22' 6-3/4"		G - 2.4
26	IN LIMITS	IN LIMITS	22' 5-1/2"		G.5 - 2.4
27	IN LIMITS	IN LIMITS	22' 7-5/8"		H.5 - 2.4
28	IN LIMITS	IN LIMITS	22' 7-3/4"		J - 2.4
29	NEW SLAB WILL BE SET HERE		NOT SET		K - 2.4
30	IN LIMITS	IN LIMITS	22' 11-3/8"		D - 2.7
31	IN LIMITS	IN LIMITS	22' 11-3/8"		E - 2.7
32	IN LIMITS	IN LIMITS	22' 11-3/8"		F - 2.7
33	IN LIMITS	IN LIMITS	22' 10-7/8"		G - 2.7
34	IN LIMITS	IN LIMITS	22' 7-1/8"		H - 2.7
35	IN LIMITS	IN LIMITS	22' 7"		J - 2.7
36	IN LIMITS	IN LIMITS	22' 6-7/8"		K - 2.7
37	IN LIMITS	IN LIMITS	22' 6-1/8"		K - 2.7 os 10'
38	IN LIMITS	IN LIMITS	22' 6-5/8"		K - 2.7 os 18'
39	IN LIMITS	IN LIMITS	22' 7-1/8"		K - 2.7 os 31'4
40	IN LIMITS	IN LIMITS	22' 11-1/2"		K - 2.7 os 39'4
41	IN LIMITS	IN LIMITS	22' 11-5/8"		K - 2.7 os 52'8
42	IN LIMITS	IN LIMITS	22' 11-1/4"		K - 2.7 os 60'8
43	IN LIMITS	IN LIMITS	23' 0"		D - 6.4

"IN LIMITS" INDICATES THAT COLUMN/LAYOUT POINT IS WITHIN 1/8" OF PLAN LOCATION.

"N/S DIST" & "E/W DIST" ARE FROM GRID LINE TO AS-BUILT COLUMN OR LAY-OUT POINT.

"ELEVATION" IS ON SLAB OR POINT ON COLUMN LOCATED FOR AS-BUILT POSITION.

THIS REPORT IS BASED ON G/C'S RESET GRID ON 5-12-16 BY MONTEREY BAY ENGINEERS.

ADDED/REVISED ELEVATIONS

MONTEREY CONV CTR AS-BUILT (5-16-16)

PAGE 2

FILE NAME=A:\3607\A3CONTAINS 100 PT.s DATE=05-17-2016 TIME=03:42:08

Pt.#	N/S DIST	E/W DIST	ELEVATION	(FLOOR)	DESCRIPTION
44	IN LIMITS	IN LIMITS	23' 0-1/8"		E - 6.4
45	0' 11-5/8" S	0' 1-1/2" W	22' 11-5/8"	(22' 11-5/8")	E - 6.8
46	IN LIMITS	0' 1" W	27' 0"	(22' 10-7/8")	E.5 - 6.8
47	0' 11-5/8" S	IN LIMITS	22' 10-7/8"		F - 6.8
48	IN LIMITS	IN LIMITS	22' 11-1/8"		F - 6.4
49	IN LIMITS	IN LIMITS	22' 10-1/8"		G - 6.4
50	0' 11-5/8" S	IN LIMITS	22' 9-3/4"		G - 6.8
51	0' 11-5/8" S	IN LIMITS	22' 9-5/8"		H - 6.8
52	IN IMITS	IN LIMITS	22' 9-5/8"		H - 6.4
53	IN LIMITS	IN LIMITS	22' 10-3/4"		J - 6.4
54	IN LIMITS	IN LIMITS	22' 11-3/4"		K - 6.4
55	IN LIMITS	7' 4-3/4" W	27' 0"		D - 6.8
56	IN LIMITS	3' 6-3/4" E	27' 0"		D - 6.8
57	0' 0-3/8" N	14' 6-7/8" E	26' 8-3/4"	(22' 11-3/4")	D - 6.8
58	0' 0-3/8" N	0' 0-1/2" E	28' 1-7/8"	(22' 11")	C.6 - 7.5
59	IN LIMITS	0' 0-3/4" E	28' 0-3/4"	(22' 11-1/8")	D - 7.5
60	0' 0-1/2" N	IN LIMITS	27' 8-1/4"	(22' 10-7/8")	D.5 - 7.5
61	NOT SET	NOT SET	NOT SET		C.6 - 8
62	NOT SET	NOT SET	NOT SET	(22' 9-7/8")	D - 8
63	NOT SET	NOT SET	NOT SET		D.5 - 8
64	0' 0-7/8" N	0' 0-5/8" E	26' 0-7/8"	(22' 7-3/4")	C.6 - 8
65	0' 0-3/4" N	0' 0-7/8" E	26' 10-1/4"	(22' 11")	D - 8
66	0' 0-5/8" N	0' 0-3/4" W	27' 3-7/8"	(22' 11")	E - 7.5
67	0' 0-3/8" N	0' 2-1/4" E	27' 6-1/4"	(22' 11")	B.5 - 7.5
68	0' 1" N	10' 2" W	27' 0-3/8"	(22' 10-7/8")	B - 7.5
69	7' 6-3/4" N	0' 1-1/4" W	26' 11-1/8"	(22' 11")	B - 8
70	1' 4-1/4" S	0' 1-1/4" W	26' 8-5/8"	(22' 11-1/8")	B - 9
71	1' 4-5/8" S	0' 2-1/4" E	27' 11"	(22' 10-7/8")	B.5 - 9
72	1' 4-1/4" S	IN LIMITS	27' 6-5/8"		C - 9
73	1' 4-5/8" S	0' 0-1/2" E	26' 6-1/4"		C.6 - 9
74	10' 6-3/4" S	0' 0-5/8" E	26' 5-1/8"		C.6 - 9
75	9' 10-1/4" S	20' 0-3/8" E	26' 7-5/8"	(22' 10-7/8")	C.6 - 9
76	10' 0-3/4" S	0' 2-3/8" W	26' 8-7/8"	(22' 11")	E - 9
77	2' 5-1/4" S	0' 1-1/4" W	27' 2-3/4"	(22' 11-1/4")	F - 10.5
78	0' 0-7/8" N	0' 0-3/4" E	26' 11-1/8"	(22' 11")	D - 8
79	4' 11-1/8" S	0' 1-3/8" W	26' 11-1/8"	(22' 11-1/8")	F - 9
80	0' 4-3/4" N	0' 6-3/4" E	27' 0-1/8"	(22' 10-3/4")	F - 7
81	9' 10-3/8" S	0' 0-5/8" E	27' 3"	(22' 11-1/8")	D - 9
82	1' 5-5/8" N	0' 1-3/8" E	26' 5-1/4"	(22' 11-3/8")	D - 9
83	1' 8-1/4" S	0' 1-3/4" E	27' 3"	(22' 11-5/8")	D - 10
84	5' 7-1/2" N	0' 0-1/2" W	27' 3-1/4"	(22' 11-3/4")	E - 10
85	4' 11" S	10' 1" W	26' 11-1/4"	(22' 11-1/4")	F - 9
86	0' 1-3/4" N	9' 10-7/8" E	27' 0-3/4"	(22' 10-7/8")	F - 9

"IN LIMITS" INDICATES THAT COLUMN/LAYOUT POINT IS WITHIN 1/8" OF PLAN LOCATION.

"N/S DIST" & "E/W DIST" ARE FROM GRID LINE TO AS-BUILT COLUMN OR LAY-OUT POINT.

" " IS ON SLAB OR POINT ON COLUMN LOCATED FOR AS-BUILT POSITION.

THIS REPORT IS BASED ON G/C'S RESET GRID ON 5-12-16 BY MONTEREY BAY ENGINEERS.

MONTEREY CONV CTR AS-BUILT (5-16-16)

PAGE 3

FILE NAME=A:\3607\A3CONTAINS 100 PT.s DATE=05-17-2016 TIME=03:42:22

Pt.#	N/S DIST	E/W DIST	ELEVATION	(FLOOR)	DESCRIPTION
------	----------	----------	-----------	---------	-------------

87	4' 0-5/8" N	IN LIMITS	27' 4-5/8"	(22' 11-5/8")	G - 10
88	5' 0-5/8" S	IN LIMITS	27' 0-3/8"	(22' 11-1/2")	G - 10
89	0' 0-5/8" N	0' 2" W	26' 8"	(22' 9-1/2")	G - 9
90	IN LIMITS	IN LIMITS	22' 6-3/4"		L.1 - 3
91	IN LIMITS	IN LIMITS	22' 6-3/4"		L.1 - 4
92	IN LIMITS	IN LIMITS	22' 6-3/4"		L.1 - 5
93	IN LIMITS	0' 1" E	22' 7-1/4"		L.1 - 6
94	IN LIMITS	IN LIMITS	22' 8-1/8"		L.1 - 7
95	IN LIMITS	0' 1-1/2" W	22' 6-3/8"		L.1 - 8
96	IN LIMITS	IN LIMITS	22' 5-5/8"		L.1 - 9
97	0' 0-3/4" N	IN LIMITS	22' 7-1/4"		L.8 - 7
98	0' 0-3/8" S	IN LIMITS	22' 6-3/4"		L.8 - 8
99	IN LIMITS	IN LIMITS	21' 9-3/4"		L.8 - 6
100	IN LIMITS	IN LIMITS	23' 3-3/8"		K - 6

"IN LIMITS" INDICATES THAT COLUMN/LAYOUT POINT IS WITHIN 1/8" OF PLAN LOCATION.

"N/S DIST" & "E/W DIST" ARE FROM GRID LINE TO AS-BUILT COLUMN OR LAY-OUT POINT.

"ELEVATION" IS ON SLAB OR POINT ON COLUMN LOCATED FOR AS-BUILT POSITION.

THIS REPORT IS BASED ON G/C's RESET GRID ON 5-12-16 BY MONTEREY BAY ENGINEERS.

MONTEREY CONVENTION
 CENTER- ELEVATOR
 AS-BUILT - 3X6 T/S &
 CHANNELS

(8)

CHANNEL ELEVATIONS

SOUTH SIDE OF ELEV - 29'-5⁷/₈" TOP OF CH

34'-7⁷/₈" " "

31'-3⁷/₈" " "

BOTTOM OF DECK - 34'-8³/₈"

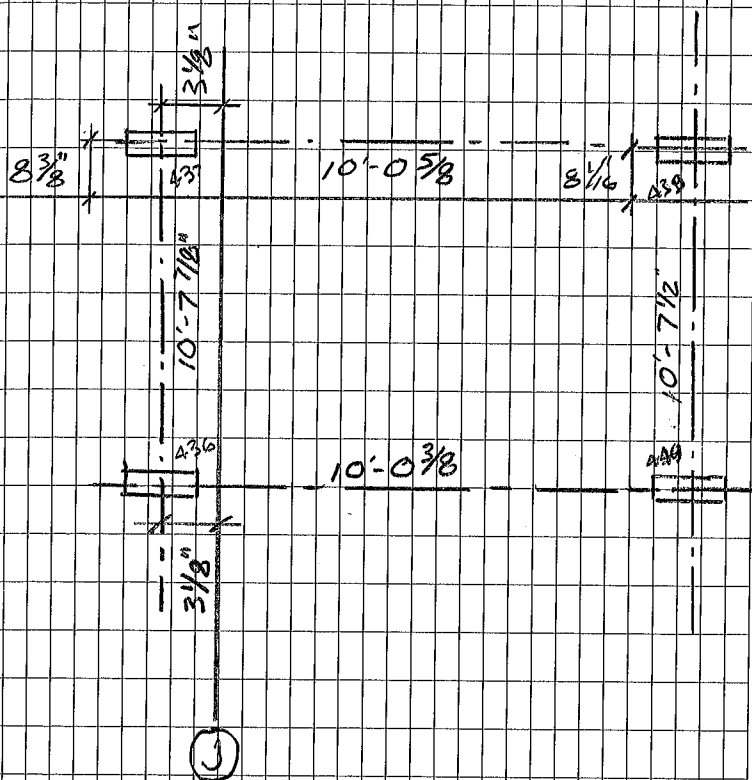
EAST SIDE OF ELEV 31'-3⁵/₈" TOP OF CHAN

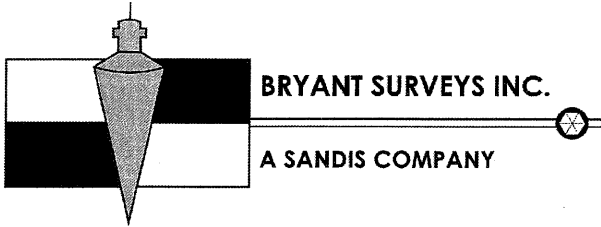
" " " 39'-7³/₈" TOP OF CHAN

LEICA TSS0
 2.15M ROD

MAY 16, 2016
 OVERCAST, MILD

L. BRYANT





DATE: 5/17/2016
TIME: 5:49 AM

5117 Johnson Drive
Pleasanton CA. 94588
925.301.1444

TRANSMITTAL

TO THE ATTENTION OF: Sal

COMPANY: Delta Ironworks

SUBJECT: Monterey Convention Center

WE ARE TRANSMITTING (THIS PAGE IS PAGE ONE OF 4 PAGES) VIA

FIRST CLASS MAIL PERSONAL DELIVERY

Email EMAIL ADDRESS BEING SENT TO: _____

OTHER: _____

REMARKS: This report is based on General Contractor's grid established on 5-12 by Monterey Bay Engineers.

Slab elevations and elevators as-built will be late today

BY: Brian Bryant ▼

BSI Job No. _____

MONTEREY CONV CTR AS-BUILT (5-16-16)

PAGE 1

FILE NAME=A:\3607\A3CONTAINS 100 PT.s DATE=05-17-2016 TIME=03:41:56

```
*****
Pt.#      N/S DIST      E/W DIST      ELEVATION      DESCRIPTION
*****
```

Pt.#	N/S DIST	E/W DIST	ELEVATION	DESCRIPTION
1	2' 0" N	IN LIMITS	22' 7-1/4"	B - 2.4
2	IN LIMITS	IN LIMITS	22' 6-3/4"	B - 2.7
3	IN LIMITS	IN LIMITS	22' 6-3/4"	B - 3.5
4	IN LIMITS	IN LIMITS	22' 11-1/2"	B - 4.5
5	IN LIMITS	IN LIMITS	22' 11-1/2"	B - 5.5
6	IN LIMITS	IN LIMITS	23' 0-1/8"	B - 6.4
7	IN LIMITS	0' 1-1/4" W	27' 0"	B - 6.8
8	0' 0-5/8" N	0' 1-3/4" W	27' 2-5/8"	B - 7.5
9	IN LIMITS	0' 0-1/2" W	26' 8-7/8"	B - 8
10	0' 1" N	9' 10-3/8" E	26' 9"	B - 8
11	0' 0-1/2" S	IN LIMITS	27' 9-5/8"	C - 8
12	0' 0-3/8" N	IN LIMITS	27' 1"	C - 7.5
13	IN LIMITS	IN LIMITS	27' 3-3/8"	C - 6.8
14	IN LIMITS	7' 11-3/4" W	23' 2-5/8"	C - 6.8
15	IN LIMITS	IN LIMITS	22' 11-3/8"	C - 6.4
16	IN LIMITS	IN LIMITS	22' 11-1/4"	C - 5.5
17	IN LIMITS	IN LIMITS	22' 10-5/8"	C - 4.5
18	IN LIMITS	IN LIMITS	22' 11-1/2"	C - 3.5
19	IN LIMITS	IN LIMITS	22' 6"	C - 2.7
20	2' 0" N	8' 0" W	22' 6-1/2"	C - 2.4
21	2' 0" N	IN LIMITS	22' 5-7/8"	C - 2.4
22	IN LIMITS	IN LIMITS	22' 6-3/8"	D - 2.4
23	IN LIMITS	IN LIMITS	22' 6-5/8"	E - 2.4
24	IN LIMITS	IN LIMITS	22' 6-3/4"	F - 2.4
25	IN LIMITS	IN LIMITS	22' 6-3/4"	G - 2.4
26	IN LIMITS	IN LIMITS	22' 5-1/2"	G.5 - 2.4
27	IN LIMITS	IN LIMITS	22' 7-5/8"	H.5 - 2.4
28	IN LIMITS	IN LIMITS	22' 7-3/4"	J - 2.4
29	NEW SLAB WILL BE SET HERE		NOT SET	K - 2.4
30	IN LIMITS	IN LIMITS	22' 11-3/8"	D - 2.7
31	IN LIMITS	IN LIMITS	22' 11-3/8"	E - 2.7
32	IN LIMITS	IN LIMITS	22' 11-3/8"	F - 2.7
33	IN LIMITS	IN LIMITS	22' 10-7/8"	G - 2.7
34	IN LIMITS	IN LIMITS	22' 7-1/8"	H - 2.7
35	IN LIMITS	IN LIMITS	22' 7"	J - 2.7
36	IN LIMITS	IN LIMITS	22' 6-7/8"	K - 2.7
37	IN LIMITS	IN LIMITS	22' 6-1/8"	K - 2.7 os 10'
38	IN LIMITS	IN LIMITS	22' 6-5/8"	K - 2.7 os 18'
39	IN LIMITS	IN LIMITS	22' 7-1/8"	K - 2.7 os 31'4
40	IN LIMITS	IN LIMITS	22' 11-1/2"	K - 2.7 os 39'4
41	IN LIMITS	IN LIMITS	22' 11-5/8"	K - 2.7 os 52'8
42	IN LIMITS	IN LIMITS	22' 11-1/4"	K - 2.7 os 60'8
43	IN LIMITS	IN LIMITS	23' 0"	D - 6.4

"IN LIMITS" INDICATES THAT COLUMN/LAYOUT POINT IS WITHIN 1/8" OF PLAN LOCATION.

"N/S DIST" & "E/W DIST" ARE FROM GRID LINE TO AS-BUILT COLUMN OR LAY-OUT POINT.

"ELEVATION" IS ON SLAB OR POINT ON COLUMN LOCATED FOR AS-BUILT POSITION.

THIS REPORT IS BASED ON G/C'S RESET GRID ON 5-12-16 BY MONTEREY BAY ENGINEERS.

MONTEREY CONV CTR AS-BUILT (5-16-16)

PAGE 2

FILE NAME=A:\3607\A3CONTAINS 100 PT.s DATE=05-17-2016 TIME=03:42:08

```
*****
Pt.#      N/S DIST          E/W DIST          ELEVATION          DESCRIPTION
*****
```

Pt.#	N/S DIST	E/W DIST	ELEVATION	DESCRIPTION
44	IN LIMITS	IN LIMITS	23' 0-1/8"	E - 6.4
45	0' 11-5/8" S	0' 1-1/2" W	22' 11-5/8"	E - 6.8
46	IN LIMITS	0' 1" W	27' 0"	E.5 - 6.8
47	0' 11-5/8" S	IN LIMITS	22' 10-7/8"	F - 6.8
48	IN LIMITS	IN LIMITS	22' 11-1/8"	F - 6.4
49	IN LIMITS	IN LIMITS	22' 10-1/8"	G - 6.4
50	0' 11-5/8" S	IN LIMITS	22' 9-3/4"	G - 6.8
51	0' 11-5/8" S	IN LIMITS	22' 9-5/8"	H - 6.8
52	IN IMITS	IN LIMITS	22' 9-5/8"	H - 6.4
53	IN LIMITS	IN LIMITS	22' 10-3/4"	J - 6.4
54	IN LIMITS	IN LIMITS	22' 11-3/4"	K - 6.4
55	IN LIMITS	7' 4-3/4" W	27' 0"	D - 6.8
56	IN LIMITS	3' 6-3/4" E	27' 0"	D - 6.8
57	0' 0-3/8" N	14' 6-7/8" E	26' 8-3/4"	D - 6.8
58	0' 0-3/8" N	0' 0-1/2" E	28' 1-7/8"	C.6 - 7.5
59	IN LIMITS	0' 0-3/4" E	28' 0-3/4"	D - 7.5
60	0' 0-1/2" N	IN LIMITS	27' 8-1/4"	D.5 - 7.5
61	NOT SET	NOT SET	NOT SET	C.6 - 8
62	NOT SET	NOT SET	NOT SET	D - 8
63	NOT SET	NOT SET	NOT SET	D.5 - 8
64	0' 0-7/8" N	0' 0-5/8" E	26' 0-7/8"	C.6 - 8
65	0' 0-3/4" N	0' 0-7/8" E	26' 10-1/4"	D - 8
66	0' 0-5/8" N	0' 0-3/4" W	27' 3-7/8"	E - 7.5
67	0' 0-3/8" N	0' 2-1/4" E	27' 6-1/4"	B.5 - 7.5
68	0' 1" N	10' 2" W	27' 0-3/8"	B - 7.5
69	7' 6-3/4" N	0' 1-1/4" W	26' 11-1/8"	B - 8
70	1' 4-1/4" S	0' 1-1/4" W	26' 8-5/8"	B - 9
71	1' 4-5/8" S	0' 2-1/4" E	27' 11"	B.5 - 9
72	1' 4-1/4" S	IN LIMITS	27' 6-5/8"	C - 9
73	1' 4-5/8" S	0' 0-1/2" E	26' 6-1/4"	C.6 - 9
74	10' 6-3/4" S	0' 0-5/8" E	26' 5-1/8"	C.6 - 9
75	9' 10-1/4" S	20' 0-3/8" E	26' 7-5/8"	C.6 - 9
76	10' 0-3/4" S	0' 2-3/8" W	26' 8-7/8"	E - 9
77	2' 5-1/4" S	0' 1-1/4" W	27' 2-3/4"	F - 10.5
78	0' 0-7/8" N	0' 0-3/4" E	26' 11-1/8"	D - 8
79	4' 11-1/8" S	0' 1-3/8" W	26' 11-1/8"	F - 9
80	0' 4-3/4" N	0' 6-3/4" E	27' 0-1/8"	F - 7
81	9' 10-3/8" S	0' 0-5/8" E	27' 3"	D - 9
82	1' 5-5/8" N	0' 1-3/8" E	26' 5-1/4"	D - 9
83	1' 8-1/4" S	0' 1-3/4" E	27' 3"	D - 10
84	5' 7-1/2" N	0' 0-1/2" W	27' 3-1/4"	E - 10
85	4' 11" S	10' 1" W	26' 11-1/4"	F - 9
86	0' 1-3/4" N	9' 10-7/8" E	27' 0-3/4"	F - 9

"IN LIMITS" INDICATES THAT COLUMN/LAYOUT POINT IS WITHIN 1/8" OF PLAN LOCATION.

"N/S DIST" & "E/W DIST" ARE FROM GRID LINE TO AS-BUILT COLUMN OR LAY-OUT POINT.

" " IS ON SLAB OR POINT ON COLUMN LOCATED FOR AS-BUILT POSITION.

THIS REPORT IS BASED ON G/C's RESET GRID ON 5-12-16 BY MONTEREY BAY ENGINEERS.

MONTEREY CONV CTR AS-BUILT (5-16-16)

PAGE 3

FILE NAME=A:\3607\A3CONTAINS 100 PT.S DATE=05-17-2016 TIME=03:42:22

Pt.#	N/S DIST	E/W DIST	ELEVATION	DESCRIPTION
87	4' 0-5/8" N	IN LIMITS	27' 4-5/8"	G - 10
88	5' 0-5/8" S	IN LIMITS	27' 0-3/8"	G - 10
89	0' 0-5/8" N	0' 2" W	26' 8"	G - 9
90	IN LIMITS	IN LIMITS	22' 6-3/4"	L.1 - 3
91	IN LIMITS	IN LIMITS	22' 6-3/4"	L.1 - 4
92	IN LIMITS	IN LIMITS	22' 7-1/4"	L.1 - 5
93	IN LIMITS	0' 1" E	22' 8-1/8"	L.1 - 6
94	IN LIMITS	IN LIMITS	22' 6-3/8"	L.1 - 7
95	IN LIMITS	0' 1-1/2" W	22' 6-5/8"	L.1 - 8
96	NOT SET	NOT SET	NOT SET	L.1 - 9
97	0' 0-3/4" N	IN LIMITS	22' 7-1/4"	L.8 - 7
98	0' 0-3/8" S	IN LIMITS	22' 6-3/4"	L.8 - 8
99	IN LIMITS	IN LIMITS	21' 9-3/4"	L.8 - 6
100	IN LIMITS	IN LIMITS	23' 3-3/8"	K - 6

"IN LIMITS" INDICATES THAT COLUMN/LAYOUT POINT IS WITHIN 1/8" OF PLAN LOCATION.

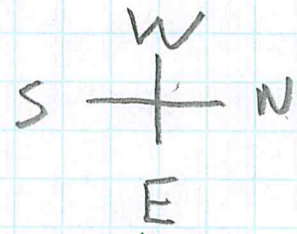
"N/S DIST" & "E/W DIST" ARE FROM GRID LINE TO AS-BUILT COLUMN OR LAY-OUT POINT.

"ELEVATION" IS ON SLAB OR POINT ON COLUMN LOCATED FOR AS-BUILT POSITION.

THIS REPORT IS BASED ON G/C'S RESET GRID ON 5-12-16 BY MONTEREY BAY ENGINEERS.

	C line	D line	E line	F line	G line	H line
GL 2.4	(2' N) 7/8" W	1-3/8" W	1/4" E	3/4" W	5/8" E	1-3/8" E
GL 2.7	5/8" W	1" W	1/2" E	1/2" W	1/4" E	1-1/2" E
GL 6.4	1-1/4" W	1-1/8" W	3/4" E	3/4" E	3/16" W	1-1/8" E
GL 6.7			5/8" E	3/4" E	1/4" W	1" E
GL 3.5	1-1/2" W					
GL 4.5	1-3/8" W					
GL 5.5	1" W					
GL 6	1-5/8" W					
GL 9.3	3/4" S					

	B line	K line	L.1	L.8 center of Cas.	J line	B.5 Line
GL 2.4	(2' N) 1-3/16" E	New slab	(GL3) 4-7/8" S	(GL3) 5/8"W	3/8" E	
GL 2.7	1-1/8" E	1-5/8" E	(GL4) 0"	(GL4) 1-3/8" E	1/2" E	
GL 6.4	2-3/4" E	(GL3.4) 1-1/2" E	(GL5) 3-3/8" N	(GL5) 1-3/8" E	3/4" E	
GL 6.7	2" E	(GL3.8) 1-1/2" E	(GL6) 5-1/2" S	(GL6) 1-7/8" E		
GL 3.5	1-1/4" E	(GL4.5) 1-1/2" E	(GL 7) 1" S	(GL7) 3/4"S		
GL 4.5	2-1/8" E	(GL4.8) 1-5/8" E	(GL 8) 2" S	(GL8) 3/4"N		
GL 5.5	2-5/8" E	1-5/8" E	(GL 9) 0"	(GL9) 2-1/8"N (12" wall)		
GL 5.8	(GL 6) 3" E	1-9/16" E				
GL 9.3	(4.5" E)(3/4" S)	(GL6.4) 1-1/4"E				(2" E) / (3/4" S)
		(GL9) 0"(N/S)				
				Estimated	See Drawing for E/W	

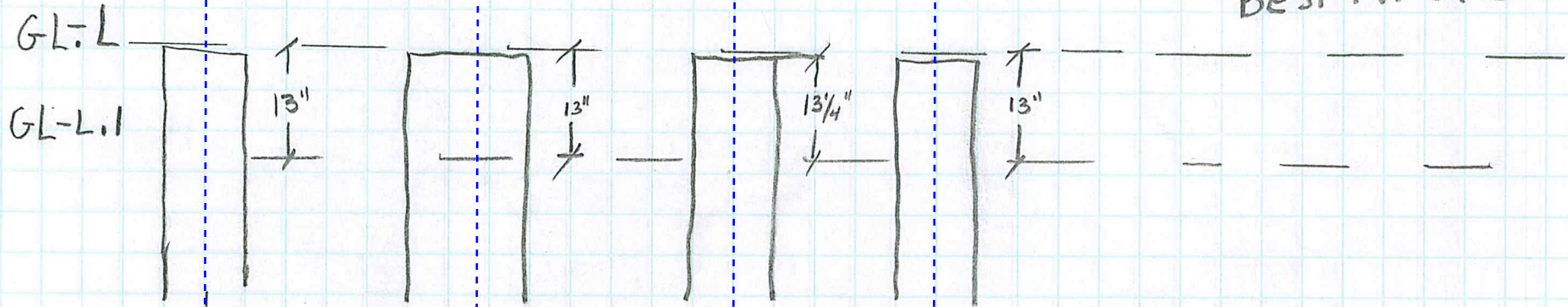


3

4

5

6



GL.L.8

