

International Community School/ Community Elementary School

11133 NE 65TH STREET
KIRKLAND, WA 98033

PHASE 2 BID SET 5/14/12

Sheet Index

C0.00-2	PHASE 2 COVER SHEET
C0.01-2	PHASE 2 NOTES SHEET
C1.00-2	PHASE 2 OVERALL DEMOLITION PLAN
C1.01-2	PHASE 2 DEMOLITION PLAN NW
C1.02-2	PHASE 2 DEMOLITION PLAN NE
C1.03-2	PHASE 2 DEMOLITION PLAN SE
C1.04-2	PHASE 2 DEMOLITION PLAN SW
C2.00-2	PHASE 2 OVERALL T.E.S.C. PLAN
C2.01-2	PHASE 2 T.E.S.C. PLAN NW
C2.02-2	PHASE 2 T.E.S.C. PLAN NE
C2.03-2	PHASE 2 T.E.S.C. PLAN SE
C2.04-2	PHASE 2 T.E.S.C. PLAN SW
C3.00-2	PHASE 2 OVERALL GRADING AND DRAINAGE PLAN
C3.01-2	PHASE 2 GRADING AND DRAINAGE PLAN NW
C3.02-2	PHASE 2 GRADING AND DRAINAGE PLAN NE
C3.03-2	PHASE 2 GRADING AND DRAINAGE PLAN SE
C3.04-2	PHASE 2 GRADING AND DRAINAGE PLAN SW
C3.10-2	PHASE 2 STORM PROFILES
C3.20-2	PHASE 2 SITE SECTIONS
C4.00-2	PHASE 2 OVERALL UTILITY PLAN
C4.01-2	PHASE 2 UTILITY PLAN NW
C4.02-2	PHASE 2 UTILITY PLAN NE
C4.03-2	PHASE 2 UTILITY PLAN SE
C4.04-2	PHASE 2 UTILITY PLAN SW
C4.20-2	PHASE 2 WATER PROFILE
C5.00-2	PHASE 2 OVERALL PAVING/HORIZONTAL CONTROL PLAN
C5.01-2	PHASE 2 PAVING/HORIZONTAL CONTROL PLAN NW
C5.02-2	PHASE 2 PAVING/HORIZONTAL CONTROL PLAN NE
C5.03-2	PHASE 2 PAVING/HORIZONTAL CONTROL PLAN SE
C5.04-2	PHASE 2 PAVING/HORIZONTAL CONTROL PLAN SW
C6.00	T.E.S.C. DETAILS
C6.01	T.E.S.C. DETAILS
C7.00	GRADING AND DRAINAGE DETAILS
C7.01	GRADING AND DRAINAGE DETAILS
C7.02	GRADING AND DRAINAGE DETAILS
C7.03	GRADING AND DRAINAGE DETAILS
C8.00	UTILITY DETAILS
C8.01	UTILITY DETAILS
C8.02	UTILITY DETAILS
C9.00	PAVING AND SITE DETAILS
C9.01	PAVING AND SITE DETAILS
C9.02	R.O.W. DETAILS

Owner

LAKE WASHINGTON SCHOOL DISTRICT
13212 NE 95TH STREET
REDMOND, WA 98052
(425) 936-1142 CONTACT: DAVID ZEITLAND

Engineer

COUGHLIN PORTER LUNDEEN
413 PINE STREET, SUITE 300
SEATTLE, WA 98101
(206) 343-0460 CONTACT: ALAN JACOBSON

Architect

MAGELLAN ARCHITECTS
8383 158TH AVENUE NE, SUITE 280
REDMOND, WA 98052
(425) 885-4300 CONTACT: GLENN STEINER

Landscape

TRA LANDSCAPE ARCHITECTURE
911 WESTERN AVENUE, SUITE 202
SEATTLE, WA 98104
(206) 682-7562 CONTACT: THOMAS REINGSTORF

Legal Description

THAT PORTION OF THE SOUTHEAST QUARTER OF SECTION 8, TOWNSHIP 25 NORTH RANGE 5 EAST, W.M., IN KING COUNTY, WASHINGTON, AND OF THE PLAT OF HARRY WHITE'S 2ND ADDITION TO KIRKLAND, ACCORDING TO THE PLAT THEREOF RECORDED IN VOLUME 6 OF PLATS, PAGE 5, IN KING COUNTY, WASHINGTON, AND OF VACATED STREETS, ALL MORE PARTICULARLY DESCRIBED AS FOLLOWS:

COMMENCING AT THE MONUMENT WHICH IS THE INTERSECTION OF THE CENTER LINE OF 112TH AVENUE NORTHEAST AND THE SOUTHERLY MARGIN OF NORTHEAST 65TH STREET IN THE PLAT OF COLLINGSWOOD ADDITION DIVISION NO. 2, ACCORDING TO THE PLAT THEREOF RECORDED IN VOLUME 20 OF PLATS, PAGE 50, RECORDS OF KING COUNTY, WASHINGTON;
THENCE NORTH 89°53'10" EAST, 30.00 FEET;
THENCE NORTH 0°26'02" WEST, 30.00 FEET TO THE TRUE POINT OF BEGINNING, SAID POINT BEING THE SOUTHWEST CORNER OF BLOCK 2, IN SAID PLAT OF COLLINGSWOOD ADDITION, DIVISION NO. 2;
THENCE SOUTH 0°24'32" EAST, 30.00 FEET;
THENCE NORTH 89°53'10" EAST, 30.00 FEET;
THENCE SOUTH 89°53'10" WEST, 360.00 FEET;
THENCE SOUTH 89°53'10" WEST, 163.83 FEET;
THENCE SOUTH 0°14'30" WEST, 270.00 FEET;
THENCE SOUTH 89°53'10" WEST, ALONG THE NORTHERLY MARGIN OF NORTHEAST 62ND STREET PRODUCED FOR 623.76 FEET;
THENCE NORTH 0°13'41" EAST, ALONG THE EAST MARGIN OF KIRKLAND STREET (111TH AVENUE NORTHEAST) AND SAID STREET PRODUCED FOR 690.00 FEET;
THENCE NORTH 89°53'10" EAST, ALONG THE NORTH MARGIN OF NORTHEAST 65TH STREET FOR 488.26 FEET, TO THE TRUE POINT OF BEGINNING.

Horizontal Datum

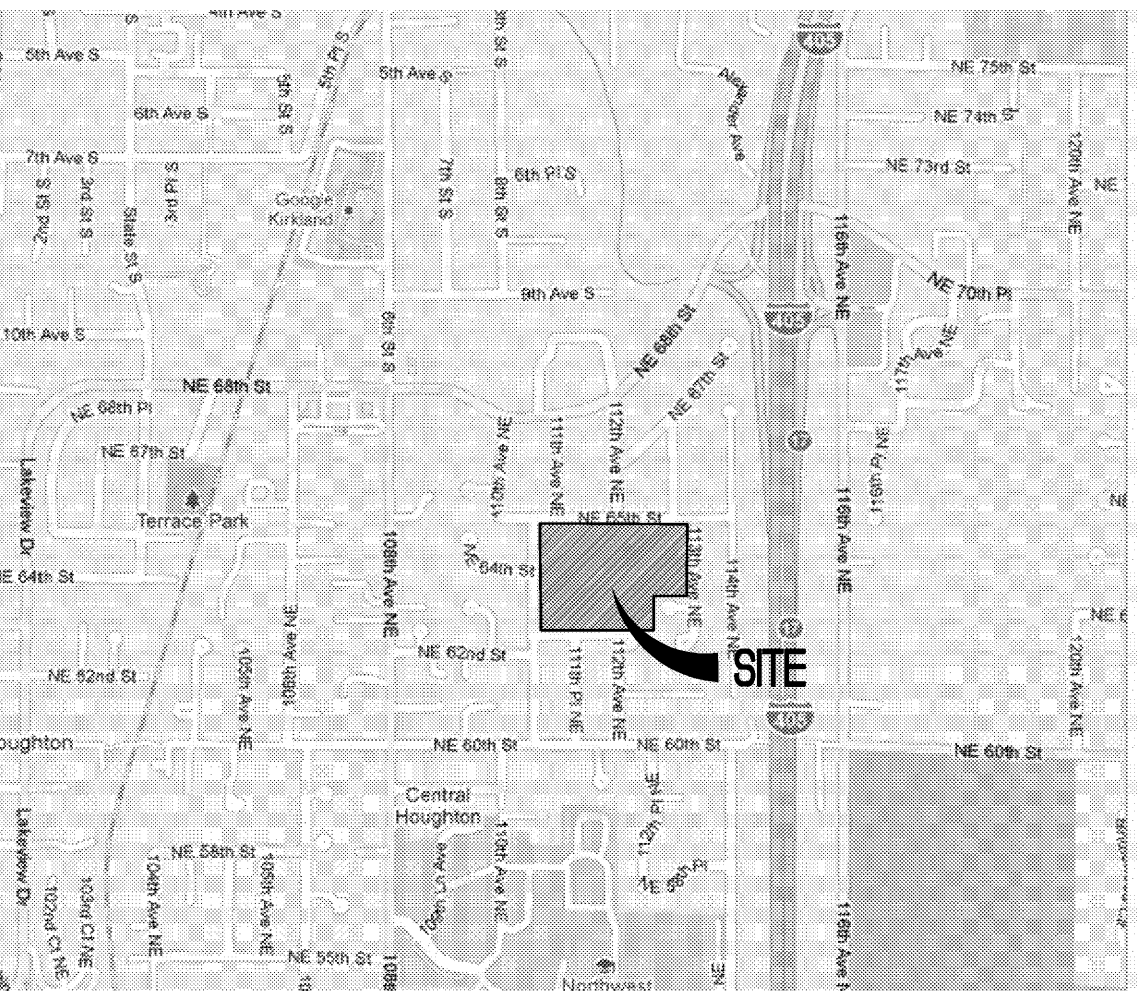
CITY OF KIRKLAND DATUM, NAD 83/91, BASED ON THE PLAT OF HIGH-LAND VIEW ROTATED TO CITY OF KIRKLAND MONUMENTS 14 AND 19.

Vertical Datum

CITY OF KIRKLAND DATUM, NAD 88, BASED ON FOUND BENCHMARK No. 82, FOUND CHISELED "X" ON THE NE CORNER OF THE WATER VAULT NW OF THE INTERSECTION OF 111TH PLACE AND NE 60TH STREET, ELEV=318.96'.

Vicinity Map

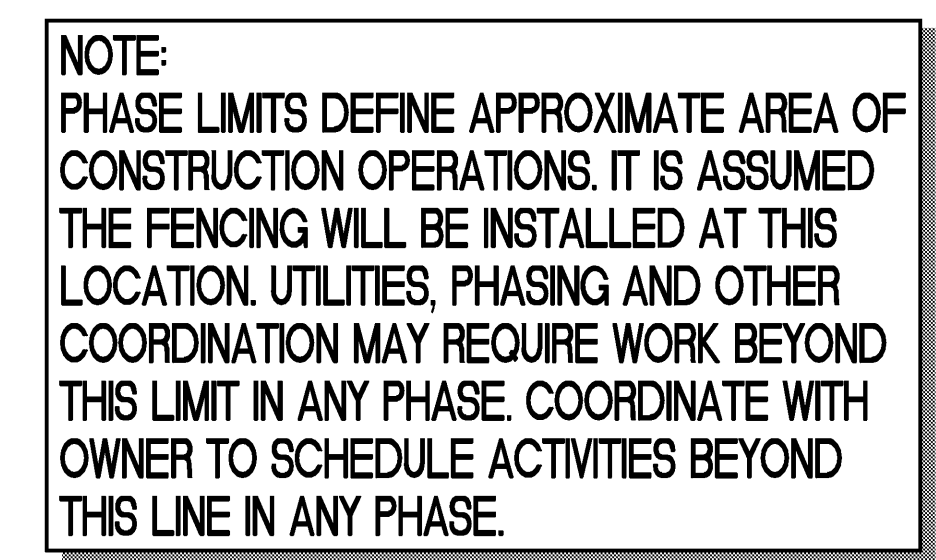
N.T.S.

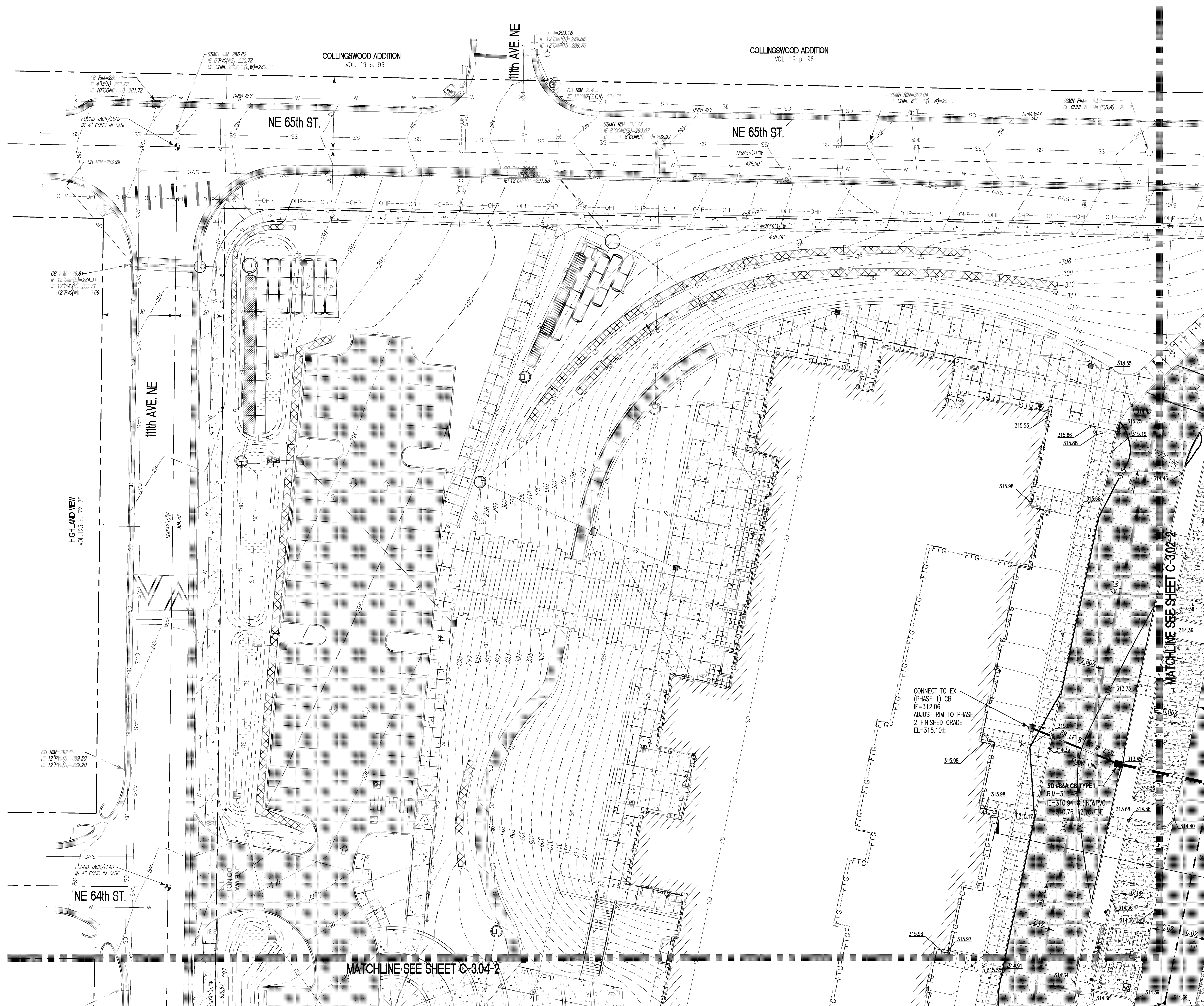


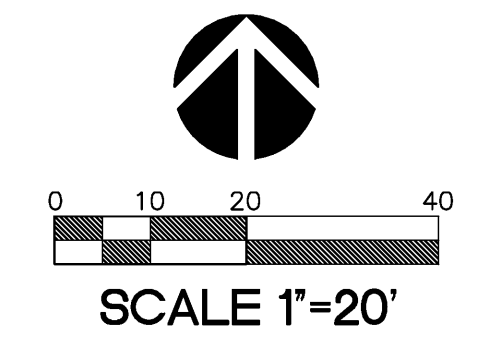
INTERNATIONAL COMMUNITY SCHOOL /
COMMUNITY ELEMENTARY SCHOOL
REPLACEMENT PROJECT
11133 NE 65TH ST
KIRKLAND, WA 98033

30"x42" SCALE: AS SHOWN	
PLOT DATE:	05-09-12
CAD FILE:	
JOB NUMBER:	C101555-01
CHECKED:	KAW
DRAWN:	SSN
STATUS:	BID SET

C0.01-2

[illegible]





	EXISTING	REMOVE	PROPOSED
ASPHALT PAVING			
POROUS ASPHALT			
ASPHALT TREATED BASE (ATB)			
CONCRETE PAVING			
PERVIOUS CONCRETE			
HEAVY CONCRETE			
BUILDINGS			
GRAVEL			
RIP RAP CONSTRUCTION ENTRANCE			
SAWCUT LINE			
CONSTRUCTION LIMITS			
SITE FENCE			
SILT FENCE			
STORM CB W/PROTECTION			
CURBING			
ROCKERY			
GABION WALL			
TREE W/PROTECTION			
CONTOUR (INDEX)			
CONTOUR			
WATER LINE			
STORM DRAINAGE LINE			
SANITARY SEWER LINE			
POWER			
TELEPHONE LINE			
GAS LINE			
WATER METER/VALVE/FH/H			
STORM CB/MH			
SANITARY SEWER MH/CO			
GAS VALVE/METER			
STREET LIGHT ASSEMBLY			
TELEPHONE RISER/MH			

Magellan
ARCHITECTS

8383 158th Avenue Northeast, Suite 280
Redmond, Washington 98052
Tel (425) 885-4300 Fax (425) 885-4303
www.magellannarchitects.com

**COUGHLIN
PORTER
LUNDEEN**

413 PINE STREET - SUITE 300
SEATTLE, WA 98101
P: 206/343-0460
F: 206/343-5691

STRUCTURAL AND CIVIL
ENGINEERING CORPORATION

/ 70

HOOL

YSC
(CH)NIT
RY S

MMU
NTA

CO
EME

NATIONAL

ATOMIC
NITY
JECT
033

65TH S
WA 98

INTI
CON
REPLACE
11133 N
KIRKLAN

REVISIONS		
NO.	DATE	BY

DESIGN APPROVAL:	06-13-11
PERMIT SUBMITTAL:	04-11-12
PERMIT RECEIVED:	

PROD DOCS:	05-14-12
CONSTR. DOCS:	

LOT DATE: 05-09-12

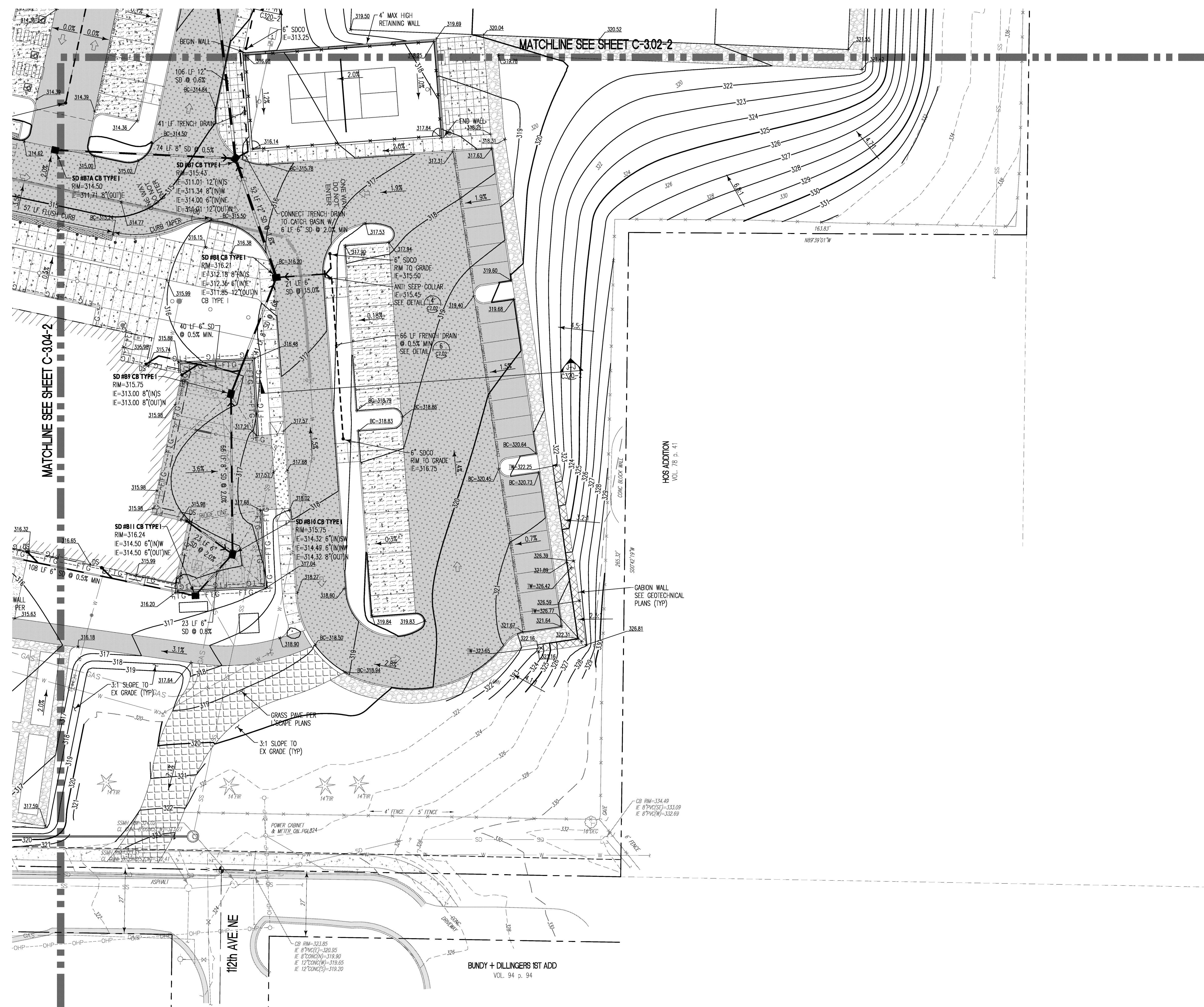
LOAD FILE:

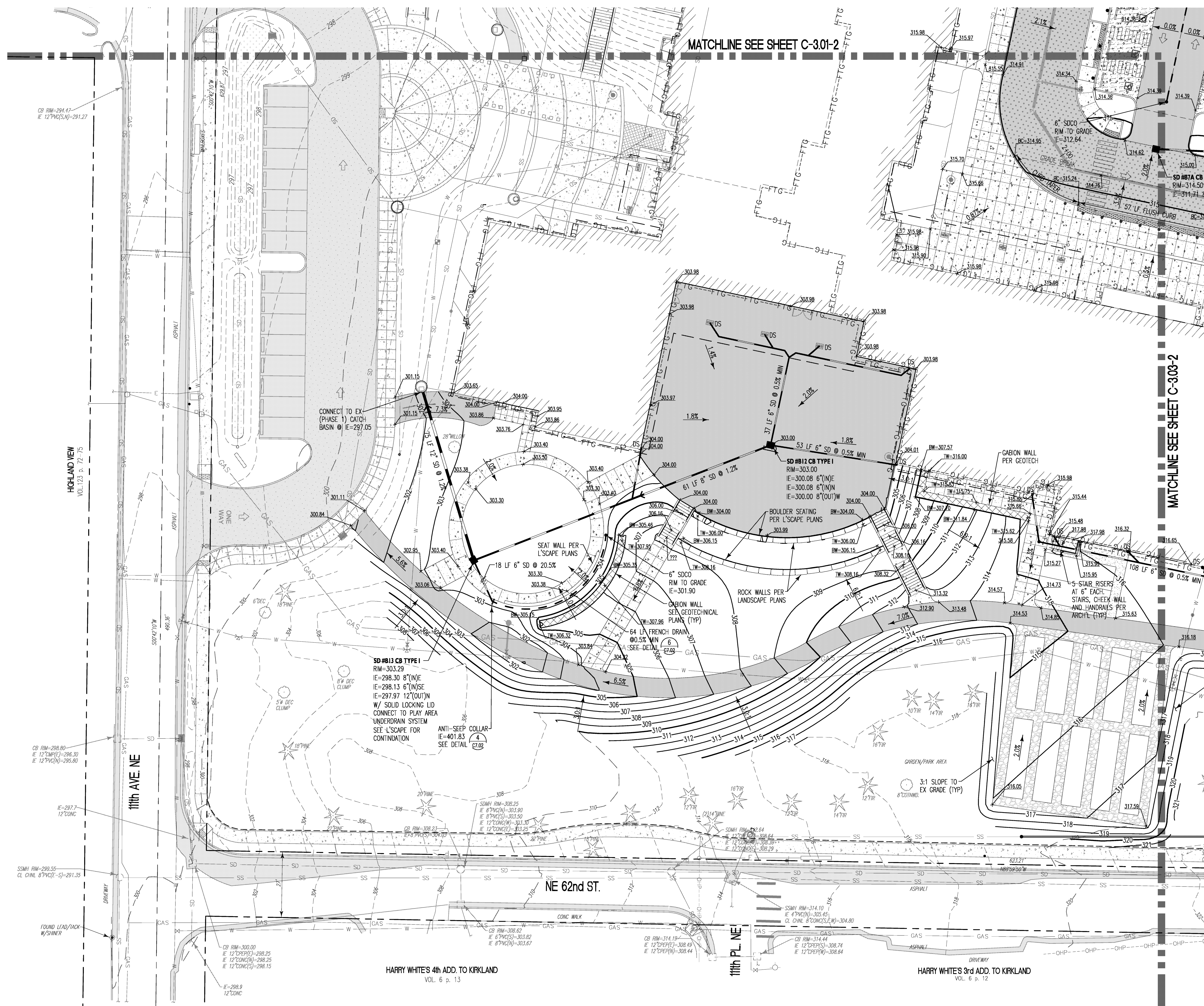
JOB NUMBER: C101555 01

CHECKED:	KAW
DRAWN:	SSN
STATUS:	BID SET

PHASE 2 GRADING AND
DRAINAGE PLAN NE

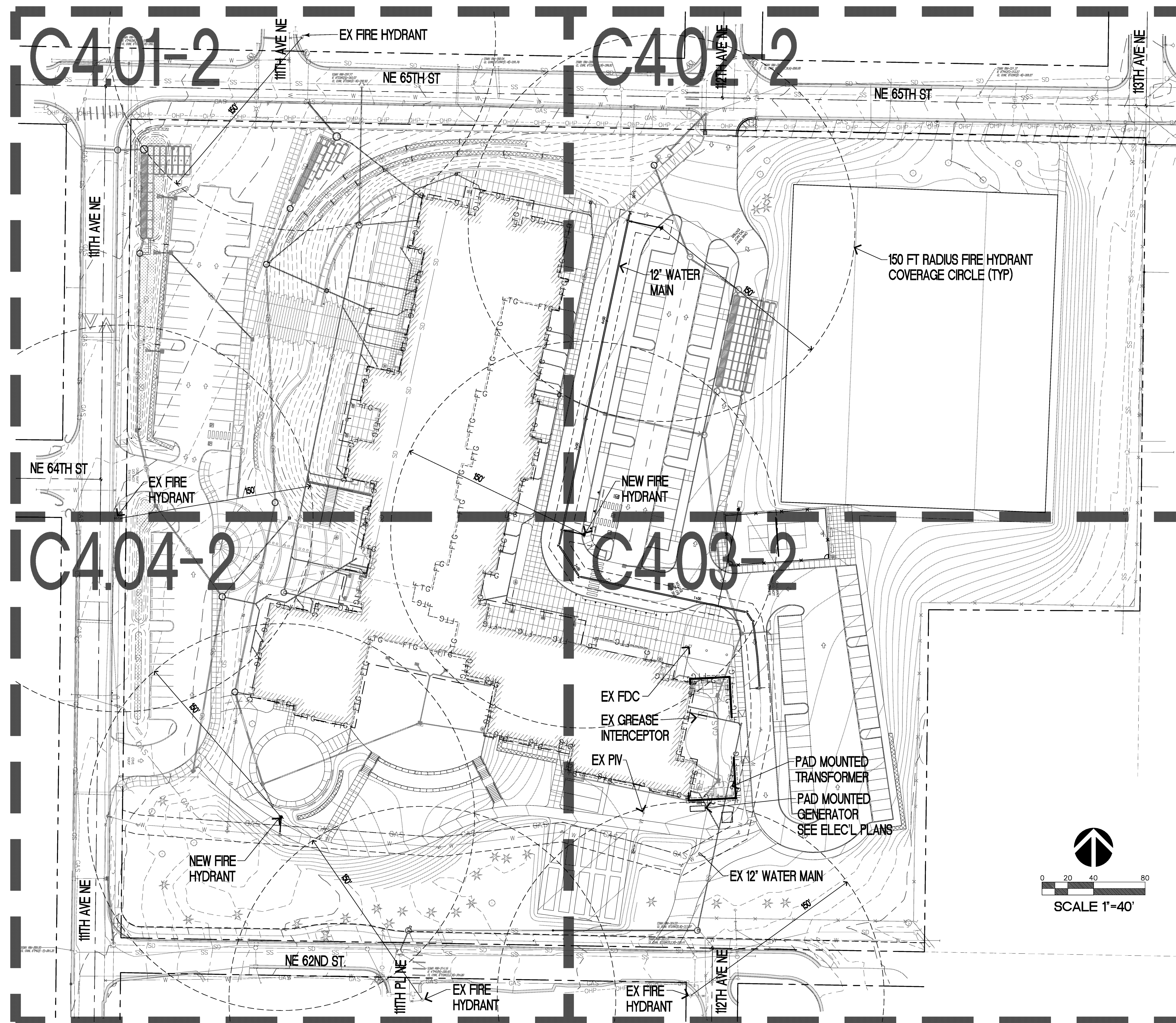
C3.02-2



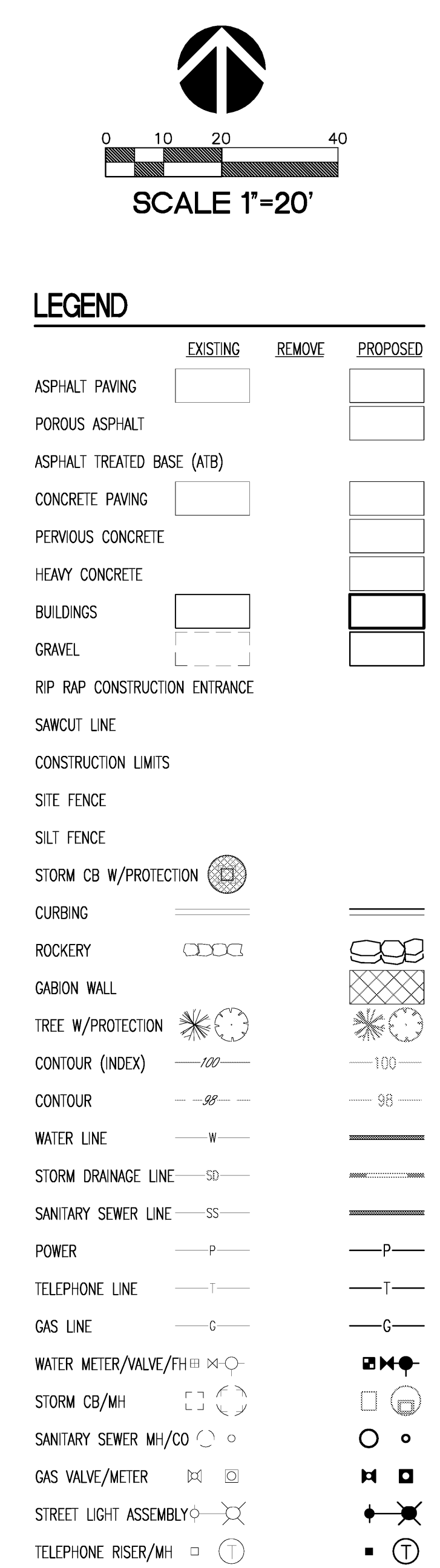


[illegible]

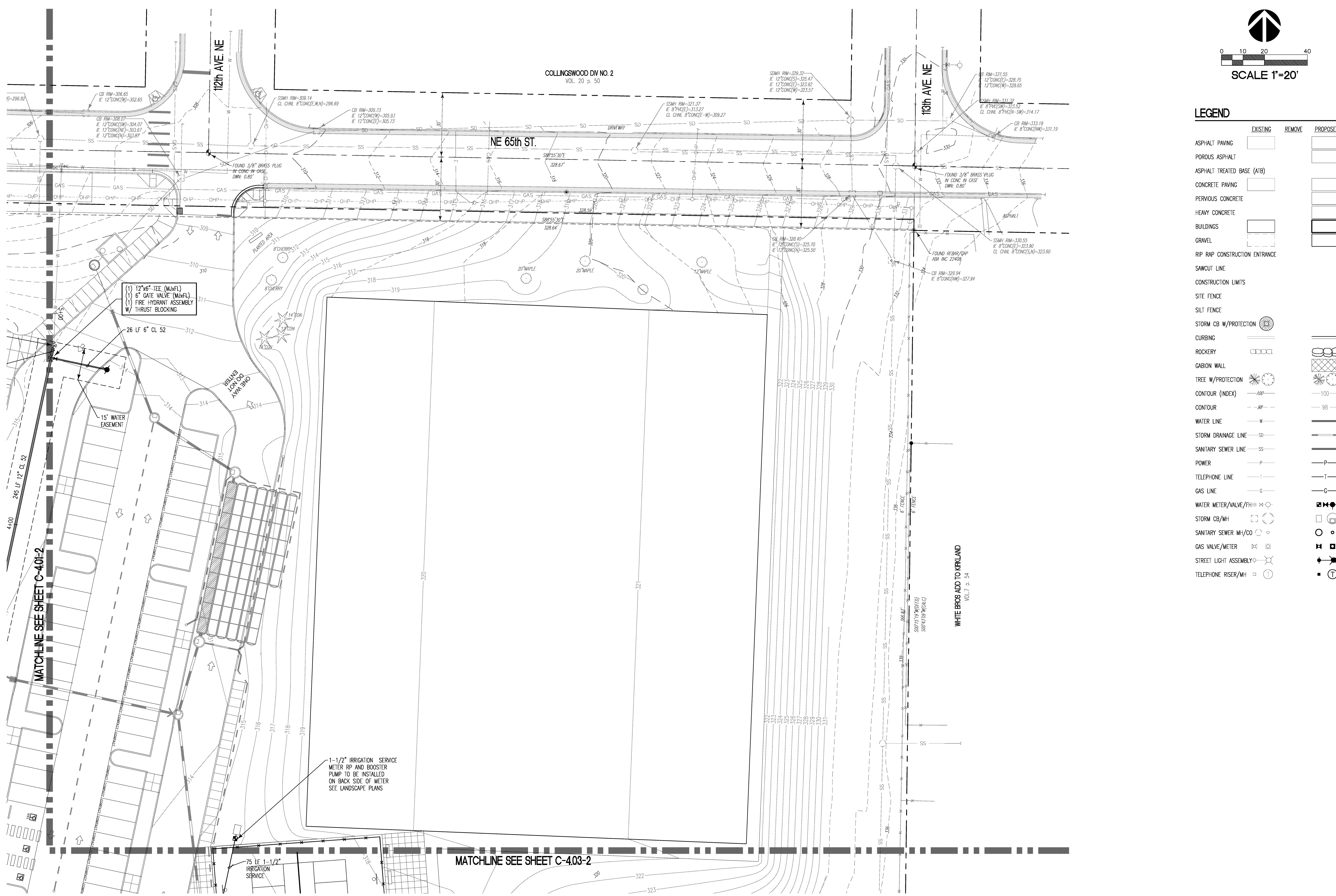
0"x42" SCALE: AS SHOWN	
LOT DATE:	05-09-12
CAD FILE:	
JOB NUMBER:	C101555-01
CHECKED:	KAW
DRAWN:	SSN
STATUS:	BID SET

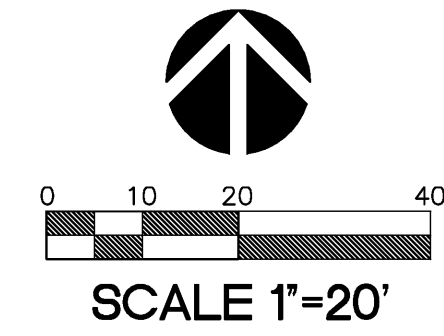


NOTE:
PHASE LIMITS DEFINE APPROXIMATE AREA OF CONSTRUCTION OPERATIONS. IT IS ASSUMED THE FENCING WILL BE INSTALLED AT THIS LOCATION. UTILITIES, PHASING AND OTHER COORDINATION MAY REQUIRE WORK BEYOND THIS LIMIT IN ANY PHASE. COORDINATE WITH OWNER TO SCHEDULE ACTIVITIES BEYOND THIS LINE IN ANY PHASE.

[illegible]

30"x42" SCALE: AS SHOWN	
PLOT DATE:	05-09-12
CAD FILE:	
JOB NUMBER:	C101555-01
CHECKED:	KAU
DRAWN:	SSN
STATUS:	BID SET





LEGEND			
	EXISTING	REMOVE	PROPOSED
ASPHALT PAVING			
POROUS ASPHALT			
ASPHALT TREATED BASE (ATB)			
CONCRETE PAVING			
PERVIOUS CONCRETE			
HEAVY CONCRETE			
BUILDINGS			
GRAVEL			
RP RAP CONSTRUCTION ENTRANCE			
SAWCUT LINE			
CONSTRUCTION LIMITS			
SITE FENCE			
SILT FENCE			
STORM CB W/PROTECTION			
CURBING			
ROCKERY			
GABION WALL			
TREE W/PROTECTION			
CONTOUR (INDEX)			
CONTOUR			
WATER LINE			
STORM DRAINAGE LINE			
SANITARY SEWER LINE			
POWER			
TELEPHONE LINE			
GAS LINE			
WATER METER/VALVE/FH			
STORM CB/MH			
SANITARY SEWER MH/CO			
GAS VALVE/METER			
STREET LIGHT ASSEMBLY			
TELEPHONE RISER/MH			

**INTERNATIONAL COMMUNITY SCHOOL /
COMMUNITY ELEMENTARY SCHOOL**

REPLACE PROJECT
11133 NE 65TH ST
KIRKLAND, WA 98033

Magellan
ARCHITECTS

8335 158th Avenue Northeast, Suite 280
Bellevue, Washington 98008
Tel (425) 885-4300 • Fax (425) 885-4303
www.magellanarchitects.com

**COUGHLIN
PORTER
LUNDEEN**

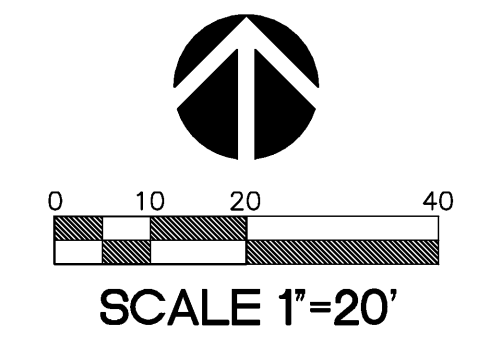
413 PINE STREET - SUITE 300
SEATTLE, WA 98101

P: 206/343-0460
F: 206/343-5691

A CONSULTING
STRUCTURAL AND CIVIL
ENGINEERING CORPORATION

[illegible]

0"x42" SCALE: AS SHOWN	
LOT DATE:	05-09-12
LOAD FILE:	
JOB NUMBER:	C101555-01
CHECKED:	KAW
DRAWN:	SSN
STATUS:	BID SET



	EXISTING	REMOVE	PROPOSED
ASPHALT PAVING			
POROUS ASPHALT			
ASPHALT TREATED BASE (ATB)			
CONCRETE PAVING			
PERVIOUS CONCRETE			
HEAVY CONCRETE			
BUILDINGS			
GRAVEL			
RIP RAP CONSTRUCTION ENTRANCE			
SAWCUT LINE			
CONSTRUCTION LIMITS			
SITE FENCE			
SILT FENCE			
STORM CB W/PROTECTION			
CURBING			
ROCKERY			
GABION WALL			
TREE W/PROTECTION			
CONTOUR (INDEX)			
CONTOUR			
WATER LINE			
STORM DRAINAGE LINE			
SANITARY SEWER LINE			
POWER			
TELEPHONE LINE			
GAS LINE			
WATER METER/VALVE/FH			
STORM CB/MH			
SANITARY SEWER MH/CO			
GAS VALVE/METER			
STREET LIGHT ASSEMBLY			
TELEPHONE RISER/MH			

Magellan
ARCHITECTS
8383 158th Avenue Northeast, Suite 200
Redmond, Washington 98052
Tel (425) 885-4300 Fax (425) 885-4303
www.magellanaarchitects.com

**COUGHLIN
PORTER
LUNDEN**

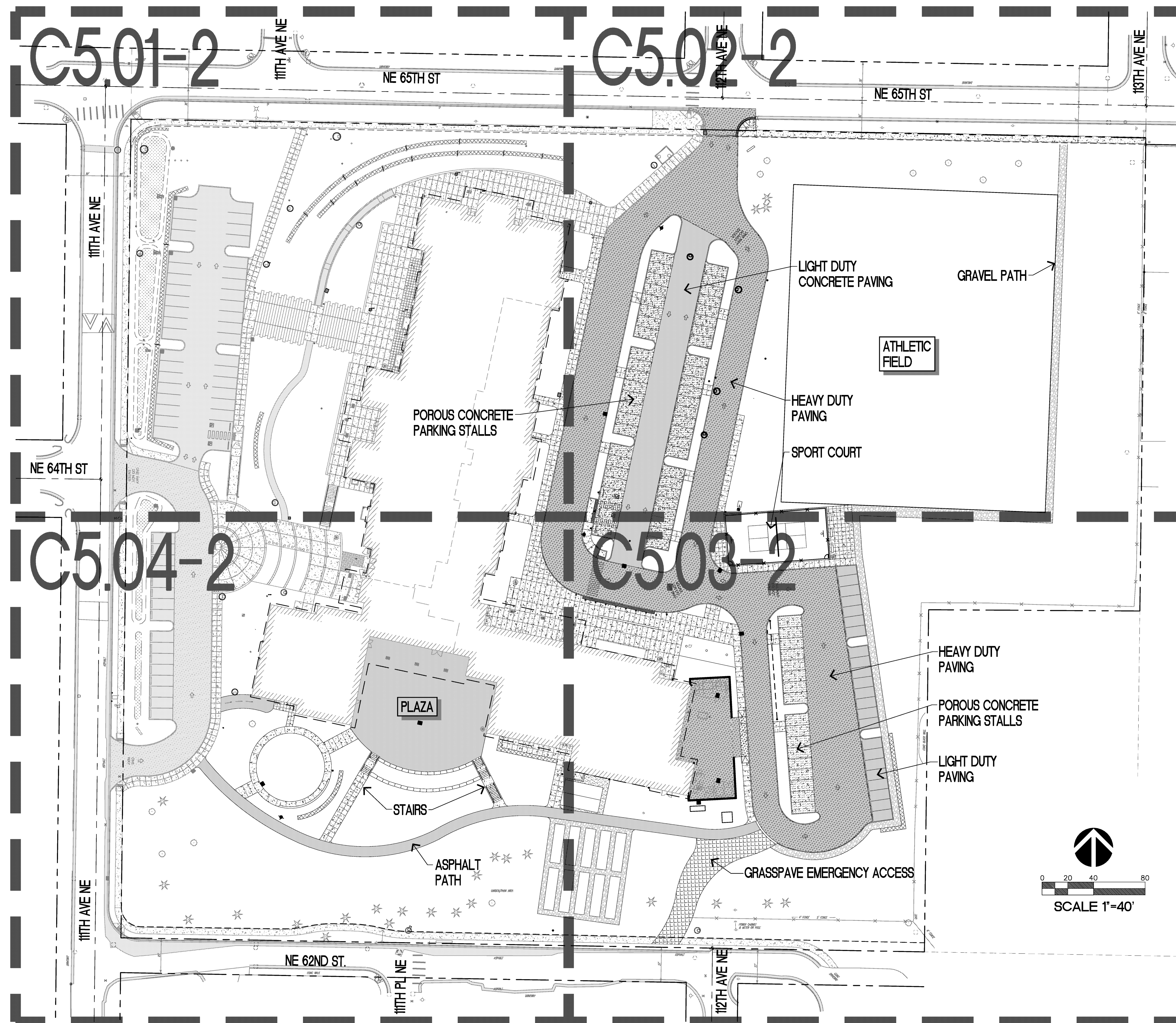
413 PINE STREET - SUITE 300
SEATTLE, WA 98101
P: 206/343-0460
F: 206/343-5691

A CONSULTING
STRUCTURAL AND CIVIL
ENGINEERING CORPORATION

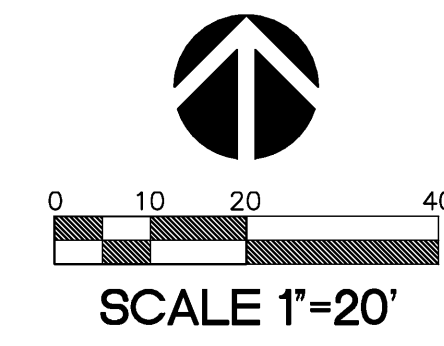
INTERNATIONAL COMMUNITY SCHOOL /
COMMUNITY ELEMENTARY SCHOOL
REPLACEMENT PROJECT
11133 NE 65TH ST
KIRKLAND, WA 98033

[illegible]

30"x42" SCALE: AS SHOWN	
PLOT DATE:	05-09-12
CAD FILE:	
JOB NUMBER:	C101555-01
CHECKED:	KAU
DRAWN:	SSN
STATUS:	BID SET



NOTE:
PHASE LIMITS DEFINE APPROXIMATE AREA OF CONSTRUCTION OPERATIONS. IT IS ASSUMED THE FENCING WILL BE INSTALLED AT THIS LOCATION. UTILITIES, PHASING AND OTHER COORDINATION MAY REQUIRE WORK BEYOND THIS LIMIT IN ANY PHASE. COORDINATE WITH OWNER TO SCHEDULE ACTIVITIES BEYOND THIS LINE IN ANY PHASE.



	EXISTING	REMOVE	PROPOSED
ASPHALT PAVING			
POROUS ASPHALT			
ASPHALT TREATED BASE (ATB)			
CONCRETE PAVING			
PERVIOUS CONCRETE			
HEAVY CONCRETE			
BUILDINGS			
GRAVEL			
RIP RAP CONSTRUCTION ENTRANCE			
SAWCUT LINE			
CONSTRUCTION LIMITS			
SITE FENCE			
SILT FENCE			
STORM CB W/PROTECTION			
CURBING			
ROCKERY			
GABION WALL			
TREE W/PROTECTION			
CONTOUR (INDEX)			
CONTOUR			
WATER LINE	W		
STORM DRAINAGE LINE	SD		
SANITARY SEWER LINE	SS		
POWER	P		
TELEPHONE LINE	T		
GAS LINE	G		
WATER METER/VALVE/FH/H			
STORM CB/MH			
SANITARY SEWER MH/CO			
GAS VALVE/METER			
STREET LIGHT ASSEMBLY			
TELEPHONE RISER/MH			

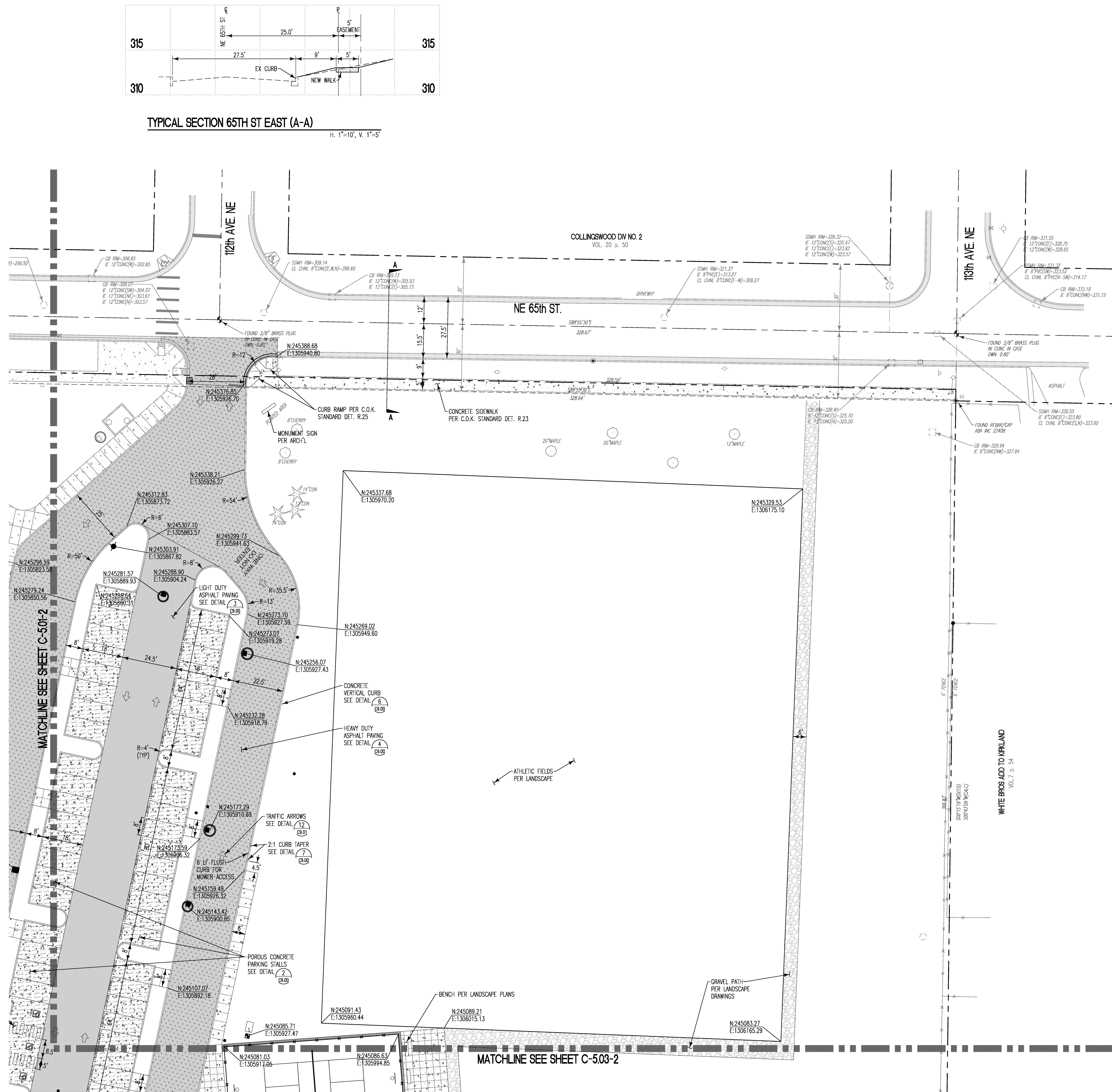
Magellan
ARCHITECTS
8383 158th Avenue Northeast, Suite 200
Redmond, Washington 98052
Tel (425) 885-4300 Fax (425) 885-4303
www.magellanaarchitects.com

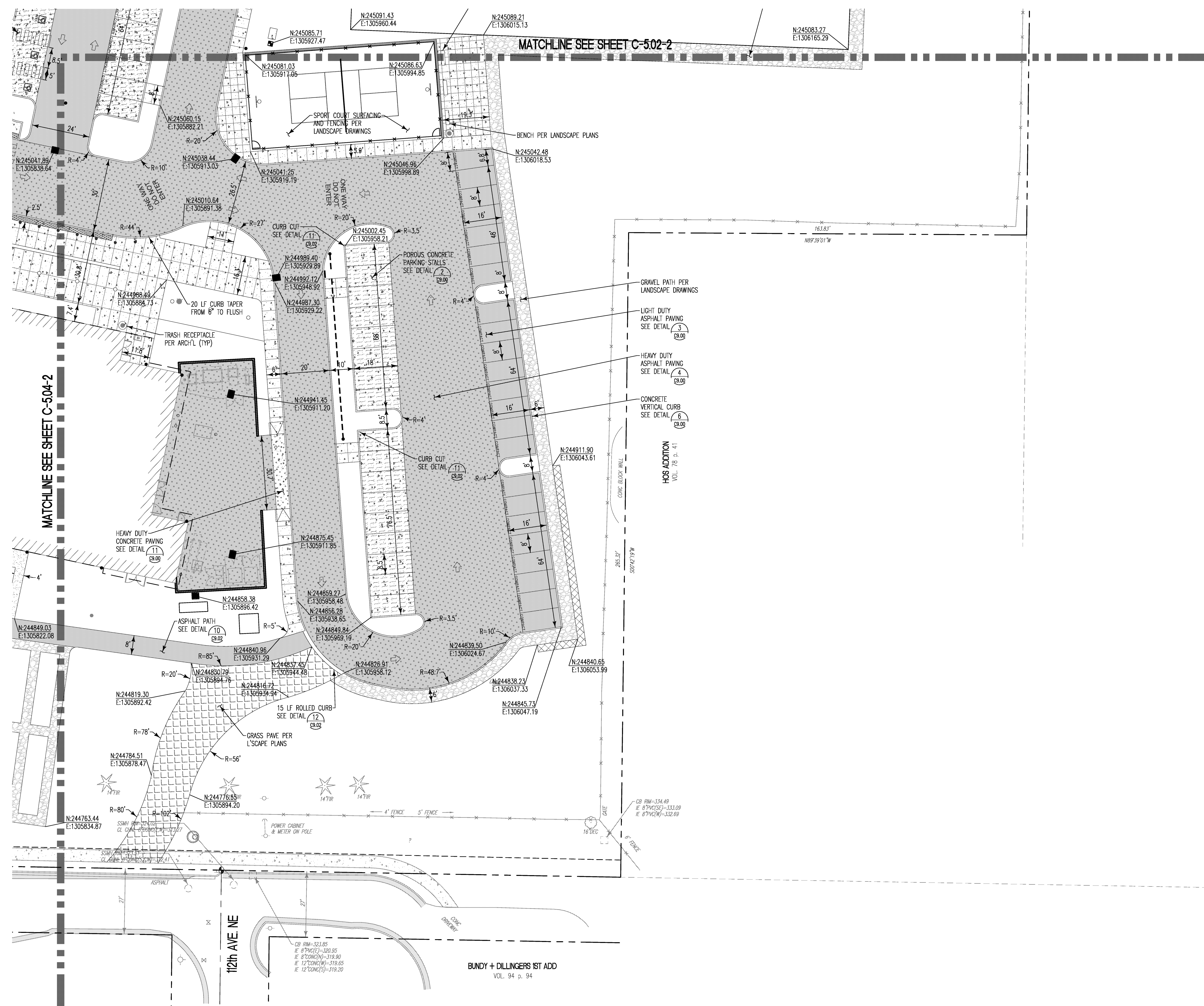
**COUGHLIN
PORTER
LUNDEN**
413 PINE STREET - SUITE 300
SEATTLE, WA 98101
P: 206/343-0460
F: 206/343-5691
A CONSULTING
STRUCTURAL AND CIVIL
ENGINEERING CORPORATION

INTERNATIONAL COMMUNITY SCHOOL /
COMMUNITY ELEMENTARY SCHOOL
REPLACEMENT PROJECT
11133 NE 65TH ST
KIRKLAND, WA 98033

[illegible]

30"x42" SCALE: AS SHOWN	
PLOT DATE:	05-09-12
CAD FILE:	
JOB NUMBER:	C101555-01
CHECKED:	KAU
DRAWN:	SSN
STATUS:	BID SET





Copyright © 2011 Magellan Associates PLLC
All rights reserved. The documents prepared by the Architect for this project are instruments of the Architect's service for use solely with respect to this project.
No part of this plan may be copied, reproduced, transmitted in any form or by any means, electronic or mechanical, including photocopying, recording, or by information retrieval system, without the express written approval of Magellan Associates, PLLC.
This plan is prepared under a professional permit, and may be used without professional permission, but any purchase of this set of plans entitles the purchaser to use this set of plans for the construction of the project.
Additional sets of plans do not entitle the purchaser to construct more than one building.

Magellan
ARCHITECTS

88383 158th Avenue Northeast, Suite 280
Redmond, Washington 98052
Tel (425) 885-4300 Fax (425) 885-4303
www.magellannarchitects.com

**COUGHLIN
PORTER
LUNDEEN**

413 PINE STREET - SUITE 300
SEATTLE, WA 98101
P: 206/343-0460
F: 206/343-5691

A CONSULTING
STRUCTURAL AND CIVIL
ENGINEERING CORPORATION

INTERNATIONAL COMMUNITY SCHOOL /
COMMUNITY ELEMENTARY SCHOOL
REPLACEMENT PROJECT
11133 NE 65TH ST
KIRKLAND, WA 98033

[illegible]

0"x42" SCALE: AS SHOWN	
LOT DATE:	05-09-12
CAD FILE:	
JOB NUMBER:	C101555-01
CHECKED:	KAW
DRAWN:	SSN
STATUS:	BID SET

HASE 2 PAVING/HORIZONTAL
CONTROL PLAN SW

C5.04-2

