

1. Cover Page

SMRT ARCHITECTS AND ENGINEERS



Project Title: DYS Taunton - Southeast Regional Youth Service Center

Awarding Agency: Division of Capital Asset
Management & Maintenance (DCAMM)

DSB List # **22-20**

Project # **DYS2201**

Project Location: **Taunton, MA**

User Agency Name: **Department of Youth
Service (DYS)**

Prime Firm Information

Main Office Address

**200 Brickstone Square, Suite 303
Andover
Massachusetts**

MA Licensed Architects: **15**
MA Licensed Engineers: **11**

Principal-in-Charge
Graham Vickers, AIA

Total employees: **129**
MA based employees: **23**

Project Manager(s)
Study: **Arthur Thompson, AIA**
Design: **Mark Rogers, AIA**

Secondary Office Address

**75 Washington Ave, Suite 3A
Portland
Maine**

Project Activity

Prime DBE Status

of Total Active Projects: 8
Total ECC of Active Projects: \$41,449,000.00

of Total Active MA State Projects: 4
Total ECC of Active MA State Projects:
\$22,249,000.00

Minority Owned Business (MBE) ☐
Woman Owned Business (WBE) ☐
Veteran Owned Business (VBE) ☐
Service Disabled Veteran Owned (SDVOBE) ☐
Disadvantaged Business Enterprise (DBE) ☐

Disability Owned Business Enterprise (DOBE) ☐
LGBT Business Enterprise (LGBTBE) ☐
Portuguese Business Enterprise (PBE) ☐
Small Business Purchasing Program (SBPP) ☐

Team Composition	Team Contact	Firm Name	DBE Status	Registration
Architect	Graham Vickers, AIA	SMRT ARCHITECTS AND ENGINEERS	NA	32369
Landscape Architect	Kathryn Ostermier	WOLA, LLC	WBE	4295
Interior Designer	Lisa Laflamme, NCIDQ	SMRT ARCHITECTS AND ENGINEERS	NA	NA
Civil Engineer	William R. Maher, PE, LSIT	NITSCH ENGINEERING, INC.	WBE	41669
Electrical Engineer	Michael Pentella, PE	SMRT ARCHITECTS AND ENGINEERS	NA	52665

Mechanical Engineer	Golam Mustafa, PE	PRISTINE ENGINEERS, INC.	MBE	41455
Structural Engineer	Brian Steele, PE	SMRT ARCHITECTS AND ENGINEERS	NA	54869
Specifications	Dennis Morin, AIA	SMRT ARCHITECTS AND ENGINEERS	NA	NA
Cost Estimator	Clive Tysoe	ELLANA, INC.	WBE	n/a
MA Building Code Consultant	Ted Dow	JENSEN HUGHES, INC.	N/A	47848
Historic Preservation	Robert March, AIA	SMRT ARCHITECTS AND ENGINEERS	NA	NA
Hazardous Materials Consultant	Kevin Donovan	MABBETT AND ASSOCIATES, INC.	SDVOBE	A1002014
Principal in Charge of Juvenile Planning	Curtiss J Pulitzer	PULITZER/BOGARD AND ASSOCIATES, LLC	N/A	N/A
Security Electronics and Low Voltage Designer	Lura Wade, PE, LEED AP, RCDD	SMRT ARCHITECTS AND ENGINEERS	NA	NA
Architect for Study	Arthur Thompson, AIA	SMRT ARCHITECTS AND ENGINEERS	NA	NA
Architect for Design	Mark Rogers, AIA	SMRT ARCHITECTS AND ENGINEERS	NA	951460
Juvenile Planning and Programming Support	Pamela de Toledo	PULITZER/BOGARD AND ASSOCIATES, LLC	N/A	N/A
Medical/Mental Health Operations Planning	Judith Regina-Whiteley	PULITZER/BOGARD AND ASSOCIATES, LLC	N/A	N/A
Landscape Architect Principal-in-Charge	Emily Wright	WOLA, LLC	WBE	4277
Landscape Designer	Allyson Fairweather	WOLA, LLC	WBE	N/A

3. Resumes

Graham Vickers, AIA

Project Role: **Principal-in-Charge**

MA Registration Type and #:

Registered Architect
#32369

Years w/ Firm: **11**

Total Years Experience: **13**

Additional registrations / certifications:

NCARB

Availability: **20%**

Applicant Office Address:

75 Washington Ave

Suite 3A

Portland, ME 04101



Graham, a Principal and SMRT's Justice Practice leader, has specialty experience in the planning and design of hardware secure facilities for special populations including juveniles and those suffering from mental health issues. An architect with a strong design sense and technical skills, he complements his architectural expertise with an academic interest in the impact of the built environment on rehabilitation and treatment initiatives. Recently Graham has been assisting the Maine DOC with research and studies to determine the right balance of hardware and staff security in residential settings for Maine's Juvenile detainees.

Capital District Juvenile Detention Center - Albany, NY

Principal-in-Charge for the transformation, renovation, and expansion of an existing regional Juvenile Facility into a contemporary, programs focused facility able to accommodate the new "Raise The Age" cohort of Adolescent Offenders. SMRT provided a full existing facility and infrastructure assessment, multiple concepts and conventional design and CA services. The new, updated facility will support a more robust program model in an educational environment with discreet yet robust security features.

Puerto Rico Consolidated Juvenile Facility - San Juan, PR

Architect for the full consulting services for a new consolidated Juvenile Detention campus for the Commonwealth of Puerto Rico. The effort included full programming, master planning, concept and schematic level designs as well as technical performance specifications for a new full service, 600-bed facility to replace the Commonwealth's six aging youth corrections facilities located throughout the island. The consolidated facility will provide equal access to all programs and services for all Juvenile Detainees.

Maine DOC, Women's Re-Entry Center - Windham, ME

Project Manager and Lead Designer for this 96-bed re-entry facility designed to house minimum-security and community release status women. This project received publication for design excellence as part of the 2019 American Institute of Architects Academy of Architecture for Justice, Justice Facilities Review Program. This facility has helped the Maine DOC move over 70% of their incarcerated females out of hardware secure facilities

New Hampshire Correctional Facility for Women - Concord, NH

Architect for a new 224-bed, 112,000 s.f. facility housing all classifications of the female population in 2 buildings. The design responds to the difference in female inmates' needs and life experiences. The facility includes a stand alone step-down housing unit providing a normative environment to support an effective transition back into society.



3. Resumes

Arthur Thompson, AIA

Project Role: **Architect for Design**

MA Registration Type and #: NA

Years w/ Firm: **39**

Total Years Experience: **49**

Additional registrations / certifications:

NCARB

Availability: **50%**

Applicant Office Address:

75 Washington Ave

Suite 3A

Portland, ME 04101



Since 1984, Arthur has specialized in the design of court, law enforcement and corrections projects. Arthur has extensive experience guiding his clients through the early planning and design phases and is nationally active in correctional program design issues and serves as an instructor for the N.I.C. program “Managing Jail Design and Construction.”

Long Creek and Mountain View Youth Development Centers - South Portland and Charleston, ME

Principal-in-Charge for these two facilities serving both southern and northern Maine’s juvenile populations. The facilities are designed around aggressive education and programming goals. Program spaces are included at the housing areas as well as along a “street” connecting the housing areas to the other services.

Puerto Rico Juvenile Facility - San Juan, PR

Principal-in-Charge for the plan and design of a new full service, 600-bed facility to replace the Commonwealth’s six decentralized youth corrections facilities located throughout the island.

Maine Department of Corrections, Women’s Re-Entry - Windham, ME

Principal-in-Charge for this 96-bed re-entry facility designed to house minimum-security and community release status women. This project received publication for design excellence as part of the 2019 American Institute of Architects Academy of Architecture for Justice, Justice Facilities Review Program. This facility has helped the Maine DOC move over 70% of their incarcerated females out of hardware secure facilities.

New Hampshire Correctional Facility for Women - Concord, NH

Principal for a new 224-bed, 112,000-sqaure-foot facility housing all classifications of the female population in 4 buildings. The design responds to the difference in female inmates’ needs and life experiences.

Middlesex House of Correction, Intake Renovations & Expansion Study - Billerica, MA

Principal for the feasibility study for the renovations and expansion of the intake are with secure regional lock-up capability at Middlesex Department of Corrections.



3. Resumes

Mark Rogers, AIA

Project Role: **Architect for Study**

MA Registration Type and #:

Registered Architect

#951460

Years w/ Firm: **3**

Total Years Experience: **15**

Additional registrations / certifications:

Availability: **30%**

Applicant Office Address:

200 Brickstone Square

Suite 303

Andover, MA 01810



Mark leads the Architectural team for SMRT's Andover office. He is a skilled architect, project manager and serves as a mentor for developing architects. He has a deep understanding of the interdependent conditions of design solutions, comparing proposed design to existing conditions constraints, budgets and timelines. He deftly coordinates construction documents for large scale projects, maintaining accuracy and clear communication between various consultants and trades.

Massachusetts DOC MCI Shirley Food Service Building - Shirley, MA

Project Manager for construction of a new food service building at the Massachusetts Correctional Institute (MCI) Shirley Campus. The project includes two separate dining rooms, a new state of the art kitchen as well as some property storage and processing spaces. The new building is located in the middle of an operating correctional campus.

Massport Tactical Equipment Maintenance Facility and Site Improvement - Ayer, MA

Architect for the design and construction of a Tactical Equipment Maintenance Facility (TEMF) for the Department of Army, Fort Devens, Equipment Concentration Site 65. The project will include three drive-through work bays, offices and associated work areas. Construction cost: \$15 million.

DCAMM Western Massachusetts Hospital Windows

Architect involved with third-party installation review services for the window installation. Services include design review of current IFC construction drawings, conduct a review of associated submittals, and provide periodic installation review of windows on the mock-up (1st in-situ window installation) and over the 8 phases of the project.

Raytheon Corporate Office Fit-Up - Tewksbury, MA

Architect for the design and workplace programming of 135,000 square feet tailored to employees engaged in high profile defense programs. Her knowledge of designing a new workplace will help Raytheon attract and retain employees, support increased productivity and occupant wellness.

Raytheon Data Center Expansion - Marlborough, MA

Architect for the expansion of the current data center, as well as the addition of a new NG generator.

Maine Medical Center Medical Office Building - Scarborough, ME

Architect for this 90,000-square-foot specialty care medical office building. Tenants include neuroscience, ENT, and vascular surgery. This MOB plays a key role in enabling the organization to achieve key goals identified in its assessment and master planning process.



3. Resumes

Lura Wade, PE, LEED AP, RCDD

Project Role: **Security Electronics and Low Voltage Designer**

MA Registration Type and #:
Registered Electrical Engineer in ME, NH, VT

Years w/ Firm: **5**

Total Years Experience: **15**

Additional registrations / certifications:
LEED AP, RCDD

Availability: **30%**

Applicant Office Address:
**75 Washington Ave
Suite 3A
Portland, ME 04101**



Lura is an expert in all things high and low voltage with recent, relevant experience with security systems upgrades at operating correctional facilities as well as new cutting edge system design. She has also designed electrical systems for a multitude of commercial, technology, and government projects of varying sizes. Systems designed include lighting and lighting control, power distribution, standby power, renewable energy, fire alarm, telecommunication backbone and horizontal systems, audio/visual, access control, video surveillance and life safety systems.

Capital District Juvenile Detention Center - Albany, NY

Security/Electronics for the transformation, renovation, and expansion of an existing regional Juvenile Facility into a contemporary, programs focused facility able to accommodate the new "Raise The Age" cohort of Adolescent Offenders. SMRT provided a full existing facility and infrastructure assessment, multiple concepts and conventional design and CA services. The new, updated facility will support a more robust program model in an educational environment with discreet yet robust security features.

Genesee County Jail - Batavia, NY

Security/Electronics for this new jail designed for maximum flexibility. The project involved a full demographics trend and bed needs analysis, correctional program management and community outreach effort. The 184-bed, four-pod facility is designed to accommodate two additional housing pods without any major renovations to existing spaces. All housing pods include dedicated exterior recreation space, natural lighting, views of nature, movable furnishing, bright colors and ample program space.

Goodwill-Hinckley Juvenile Study - Hinckley, ME

Electrical Engineer for the facility conditions assessment of all major building systems including HVAC, plumbing, electrical, low voltage, security, architectural elements, and site features. This assessment included recommendations for equipment replacement and upgrades in addition to a report on any deferred maintenance items that are identified. Code compliance, including building, ADA, ACA and all pertinent conventional building codes and regulations were evaluated and reported on.

Eastern Maine Medical Center Emergency Department Renovation - Bangor, ME

Electrical Engineer /Technology Designer .for the modernization of an existing Emergency Department at EMMC's State Street campus to better serve patients and improve staff efficiency and productivity. In addition to increasing capacity to handle 36,000 visits a year, the renovated ED provides appropriate space to treat behavioral health patients and introduces a visual management planning model.



3. Resumes

Brian Steele, PE

Project Role: **Structural Engineer**

MA Registration Type and #:

Registered Engineer

#58469

Years w/ Firm: **9**

Total Years Experience: **9**

Additional registrations / certifications:

Availability: **30%**

Applicant Office Address:

75 Washington Ave

Suite 3A

Portland, ME 04101



Brian is a skilled structural engineer and project manager who has experience performing facility assessments and analyzing historic masonry buildings. He has designed numerous projects involving structural steel, reinforced concrete, reinforced masonry, wood and foundation engineering.

Bristol County Jail Roof Replacement - North Dartmouth, MA

Project Manager for replacement of existing roofing system, a 1990's era ballasted EPDM over a concrete roof deck. The new roof assembly will have energy code compliant insulation and either an adhered TPO or EPDM roof.

Bristol County Jail Masonry Study - North Dartmouth, MA

Project Manager for an assessment of masonry and structural challenges at this historic jail facility.

New Hampshire State Prison for Men, Security Updates - Concord, NH

Project Manager for the assessment, feasibility report, and full design and construction for security and perimeter upgrades.

New York OGS Collins Correctional Facility Restore Front Porch - Collins, NY

Project Manager for security upgrades at the Collins Correctional facility as part of an OGS Term Contract.

New Hampshire Correctional Facility for Women - Concord, NH

Structural Engineer involved on this new 224-bed, 112,000-square-foot facility housing all classifications of the female population in four buildings. The design responds to the difference in female inmates' needs and life experiences. The facility includes full service kitchen and dining areas which utilize contemporary technology and systems.

VA Medical Center Outpatient Mental Health - White River Junction, VT

Structural Engineer for the upgrade of the outpatient mental health program in Buildings 8 and 8A. Building 8 houses mental health outpatient treatment, while Building 8A houses the campus canteen, retail store and chapel. The first and second floor areas serving mental health patients in Building 8 are being upgraded to meet current VA mental health design guidelines, while Building 8A renovations include the canteen, kitchen and seating areas. Upgrades include both layout and system updates to ensure the long-term operational function and systems efficiencies.



3. Resumes

Michael Pentella, PE

Project Role: **Electrical Engineer**

MA Registration Type and #:

Professional Engineer

#52665

Years w/ Firm: **4**

Total Years Experience: **16**

Additional registrations / certifications:

Availability: **30%**

Applicant Office Address:

200 Brickstone Square

Suite 303

Andover, MA 01810



Mike brings significant local experience working with DCAMM and other Commonwealth of Massachusetts public clients. He has over 12 years of experience in the design of electrical systems, as well as 4 years of experience in the installation of electrical systems for justice, government, healthcare, and science/technology clients.

Massachusetts Department of Corrections MCI Shirley - Shirley, MA

Electrical engineer for the study, design and construction of a new food service building at the Massachusetts Correctional Institute (MCI) to replace an aging, temporary modular structure.

Capital District Juvenile Detention Center - Albany, NY

Electrical Engineer for the transformation, renovation, and expansion of an existing regional Juvenile Facility into a contemporary, programs focused facility able to accommodate the new "Raise The Age" cohort of Adolescent Offenders. SMRT provided a full existing facility and infrastructure assessment, multiple concepts and conventional design and CA services. The new, updated facility will support a more robust program model in an educational environment with discreet yet robust security features

Massport Tactical Equipment Maintenance Fac. & Site Improvement - Ayer, MA

Electrical engineer for Tactical Equipment Maintenance Facility (TEMF) for the Department of Army, Fort Devens, Equipment Concentration Site 65. The project includes three drive-through work bays, offices and associated work areas. The project also includes other site improvements including construction of parking areas, fencing, gates, lighting, sidewalk improvements and utility improvements.

Winstanley 1339 Tolland Turnpike - CT

Electrical Engineer to address the infrastructure required to properly demise JCP's leased space. This includes power, lighting, sprinkler systems, fire alarm, HVAC, and compressed air.

Raytheon, Pelham Test Facility - Pelham, NH

Electrical Engineer for the Raytheon Pelham test facility. The facility supports both radar integration, test and sell-off as well as supporting office space. This project consists of the design of a 77 foot by 60 foot office and radar operations building and a 7,000 square foot concrete radar testing pad. The Control Building and Test Pad will provide flexibility to handle multiple radar configurations and will house multiple different program offices to support the radar testing processes.



3. Resumes

Dennis Morin, AIA

Project Role: **Specifications**

MA Registration Type and #:

**Registered Architect
ME, NH**

Years w/ Firm: **29**

Total Years Experience: **29**

Additional registrations / certifications:

Availability: **30%**

Applicant Office Address:

**75 Washington Ave
Suite 3A
Portland, ME 04101**



With a focus on designing for justice clients, Dennis brings his significant experience designing large, complex, 24/7 facilities that must remain operational during construction. An SMRT Principal, Dennis has more than 25 years' experience providing architectural design services, including serving as architect and project manager, for correctional projects. Dennis's deep correctional resume and keen interest in the technical aspects of our craft lend to his unique role of overseeing the specification and technical requirements of all of SMRT's Justice Projects.

New Hampshire Correctional Facility for Women - Concord, NH

Project Manager/Technical Leader for a new 224-bed, 112,000 s.f. facility housing all classifications of the female population in 2 buildings. The design responds to the difference in female inmates' needs and life experiences. The facility includes a stand alone step-down housing unit providing a normative environment to support an effective transition back into society.

Long Creek and Mountain View Youth Development Centers - South Portland and Charleston, ME

Designer involved for these two facilities serving both southern and northern Maine's juvenile populations. The facilities are designed around aggressive education and programming goals. Program spaces are included at the housing areas as well as along a "street" connecting the housing areas to the other services.

Puerto Rico Consolidated Juvenile Facility - San Juan, PR

Designer involved with the full consulting services for a new consolidated Juvenile Detention campus for the Commonwealth of Puerto Rico. The effort included full programming, master planning, concept and schematic level designs as well as technical performance specifications for a new full service, 600-bed facility to replace the Commonwealth's six decentralized youth corrections facilities located throughout the island.

Greene County Jail and Sheriff's Office - Catskill, NY

Project Manager/Technical Leader for the programming, planning and design of a new 90,000-square-foot correctional facility and sheriff's office. This contemporary NY County jail is designed for an initial capacity of 80 beds with ample opportunity for internal and external expansion and contraction depending on the needs of the future. The jail includes a variety of housing pods, sizes and configurations to accommodate their demographic, classification and programmatic needs.



3. Resumes

Lisa Laflamme, NCIDQ

Project Role: **Interior Designer**

MA Registration Type and #:

Years w/ Firm: **11**

Total Years Experience: **11**

Additional registrations / certifications:

Availability: **30%**

Applicant Office Address:

75 Washington Ave

Suite 3A

Portland, ME 04101



Lisa brings her deep technical skills, understanding of material durability and maintenance, and evidence-based creative solutions to our design studio. She believes interior environments can positively affect behavior and encourage healing. A senior interior designer, her capabilities include space planning, color/material selections, 2D/3D technical drawings, renderings, and FF&E specifications.

New Hampshire Correctional Facility for Women - Concord, NH

Interior Designer for a new 224-bed, 112,000 s.f. facility housing all classifications of the female population in 2 buildings. The design responds to the difference in female inmates' needs and life experiences. The facility includes a stand alone step-down housing unit providing a normative environment to support an effective transition back into society

Maine Correctional Center Renovation and Construction - Windham, ME

Interior Designer for this phased project. The project includes 13 separate building projects of various size and complexity. Upon completion, a new state-of-the-art facility will house up to 979 prisoners, and provide a range of programmatic and treatment services. SMRT also completed the feasibility study and financial planning for this project.

Downeast Reentry Center - Machiasport, ME

Interior Designer for the new minimum-security reentry facility to house and provide support and program spaces for 48 residents. A critical piece of the Department's transition to more normalized facility environments, this project also supports the Governor's commitment to a more sustainable future with a full roof solar array, reused equipment where feasible and buildings systems designed carefully with full energy modeling throughout all phases

|

Holyoke Medical Center New Emergency Department - Holyoke, MA

Interior Designer involved with the master planning and design of the Emergency Department at Holyoke to determine the best use of available space and investigate possible expansion into other existing space to increase the volume of annual visits to be comparable with national benchmarks.



3. Resumes

Robert March, AIA

Project Role: **Historic Preservation**

MA Registration Type and #:
Registered Architect in NY

Years w/ Firm: **3**

Total Years Experience: **25**

Additional registrations / certifications:
LEED AP

Availability: **30%**

Applicant Office Address:
**433 State Street, 5th Floor
Schenectady, NY 12305**



Robert is a LEED Accredited Professional with over 25 years experience in architectural design, construction observation and construction management services. He was instrumental in leading the architectural team for a multiple phased restoration and renovation of the Franklin Delano Roosevelt Presidential Library in Hyde Park NY collaborating with the National Park Service (NPS) and the National Archives and Records Administration (NARA).

Greene County Jail and Sheriff's Office - Catskill, NY

Architect involved with the programming, planning and design of a new 90,000-square-foot correctional facility and sheriff's office. This contemporary NY County jail is designed for an initial capacity of 80 beds with ample opportunity for internal and external expansion and contraction depending on the needs of the future. The jail includes a variety of housing pods, sizes and configurations to accommodate their demographic, classification and programmatic needs.

Genesee County Jail - Batavia, NY

Project Manager for this new jail designed for maximum flexibility. The project involved a full demographics trend and bed needs analysis, correctional program management and community outreach effort. The 184-bed, four-pod facility is designed to accommodate two additional housing pods without any major renovations to existing spaces. All housing pods include dedicated exterior recreation space, natural lighting, views of nature, movable furnishing, bright colors and ample program space.

Selected Historic Preservation Work

Prior to joining SMRT Bob has spent many years focused on Historic Preservation work for some of our nation's most prominent historic landmarks and buildings.

- National Archives (NARA), Franklin Delano Roosevelt Presidential Library* - Hyde Park, NY
- National Park Service (NPS), Thomas Alva Edison Archival Storage* - West Orange, NJ
- National Park Service (NPS), Hampton National Historical Site Archival Storage* - Towson, MD
- New York State Parks (NYS), Home of Susan B. Anthony* - Battenville, NY
- Palace Theater, Albany, NY
- Princeton University Holder, Hamilton and Madison Halls, NJ
- Stone Mill, NY Botanical Garden, NY

3. Resumes

Pulitzer/Bogard & Associates, LLC

Corrections Planning Consultant

Curtiss Pulitzer, AIA

Project Role: **Principal for Juvenile Planning and Programming**

MA Registration Type and #: NA

Years w/ Firm: **30**

Total Years Experience: **45**

Additional registrations / certifications:

Availability: **Available immediately**

Applicant Office Address:

**8 Saratoga St.
Lido Beach, NY 11561**



Curtiss is one of the nation's leading experts in justice facility design and operations planning, with over 45 years of experience in the planning of justice facilities. A criminal justice planner and a licensed architect, Curtiss has been involved in justice facility planning and development in more than 40 states and Puerto Rico, serving clients at all levels of government. Curtiss's primary focus is on facility planning and operations, employing a needs-based approach in defining the user's requirements.

Williamson County Juvenile Justice Center - Franklin, TN

Serving as Principal-In-Charge and lead planner and programmer for the county's Juvenile Services system, adult detention facilities, Sheriff's Office and the Courts as part of a comprehensive criminal justice system master plan for Williamson County, TN, a rapidly growing suburb of Nashville. P/BA developed population profiles and forecasts for the juvenile justice system, in parallel with a detailed operational and functional inventory and analysis of the existing justice components and facilities. Flowing out of the recommendations which were adopted by the County, P/BA was selected again to continue with the development of detailed planning and programming tasks, operational and staffing cost analyses and design support in collaboration with the Gresham Smith Architects for the new \$175 million project.

New York City Juvenile Justice System and Facility Rehabilitation Project - New York City, NY

Principal-In-Charge and lead Planner for the master planning study, programming and design review for the rehabilitation of two juvenile justice facilities in Brooklyn and the Bronx. Substantial alterations were required to house the 16-17 adolescent population from Rikers Island. Renovations included the creation of therapeutic housing units with integrated behavioral and mental health programming.

Harris County Juvenile Detention Center - Houston, TX

Principal-In-Charge and lead planner for facility programming and design review for the new juvenile detention facility to be operated by the Harris County Juvenile Probation Department. The new facility will house 208 pre-adjudicated and 112 post-adjudicated juveniles up to the age of 17. A key focus of the new \$75million facility will be to provide specialized mental health services to the juveniles with behavioral health diagnoses.

Jetson and Swanson Centers for Youth, LA Office of Juvenile Justice - Baton Rouge, LE

Principal-In-Charge and lead planner for facility programming and design review for two new juvenile facilities--the new Jetson Center for Youth in Baton Rouge and the Swanson Center in Monroe, replacing older facilities deemed to be non-conducive to the type of therapeutic environment necessary to serve the youth. The two new **72** bed treatment campuses specialize in mental health housing, plus vocational programming, education and other services.



3. Resumes

Pulitzer/Bogard & Associates, LLC

Corrections Planning Consultant

Pamela de Toledo, MUP

Project Role: **Juvenile Planning and Programming**

MA Registration Type and #: NA

Years w/ Firm: **30**

Total Years Experience: **45**

Additional registrations / certifications:

Availability: **Available immediately**

Applicant Office Address:

**8 Saratoga St.
Lido Beach, NY 11561**



Pamela is a planner with 45 years of experience in facility and strategic planning, juvenile justice design, and policy development. Her experience covers a broad range of subjects, from formulating jail standard legislation to developing physical plant design criteria and operational procedures. She has performed numerous facility audits, and has developed operational and architectural programs, staffing analyses and operating costs analyses for facilities in over 25 states and Puerto Rico.

Williamson County Juvenile Justice Center - Franklin, TN

Planning and programming for the county's Juvenile Justice system as part of a comprehensive criminal justice system master plan for Williamson County, TN, a rapidly growing suburb of Nashville. P/BA developed population profiles and forecasts for the juvenile justice system, in parallel with a detailed operational and functional inventory and analysis of the existing justice components and facilities. The complex includes a Juvenile Detention Center, a staff-secure Respite Center, Juvenile Courts, offices for the Clerk and Juvenile Services, and an Alternative Learning Center. Continuing to provide detailed programming, staffing and operating costs, and design review for the project which is now in design.

New York City Juvenile Justice System and Facility Rehabilitation Project - New York City, NY

Master planning, programming and design review for the rehabilitation of two juvenile justice facilities in Brooklyn and the Bronx. Substantial alterations were required to house the 16-17 adolescent population from Rikers Island. Renovations included the creation of therapeutic housing units with integrated behavioral and mental health programming.

Harris County Juvenile Detention Center - Houston, TX

Facility programming and design review for the new juvenile detention facility operated by the Harris County Juvenile Probation Department. The new facility will house 208 pre-adjudicated and 112 post-adjudicated juveniles up to the age of 17. A key focus of the new \$75million facility will be to provide specialized mental health services to the juveniles with behavioral health diagnoses.

Nuevo Comienzo Juvenile Justice Complex - Yauco, Puerto Rico

Lead Planner for the programming and design review for a new complex for pre-and post-adjudicated juveniles, both male and female, at a centralized location in Puerto Rico. The project included a therapeutic housing approach, with integrated behavioral and mental health programs incorporated as a part of the housing unit management. The consolidation of juvenile justice services at a single location on the island assured the equitable distribution of services for both boys and girls, which had previously been disproportionately underserving the girls.



3. Resumes

Pulitzer/Bogard & Associates, LLC

Corrections Planning Consultant

Judith Regina-Whitely, RN, MS

Project Role: **Medical and Mental Health**

MA Registration Type and #: NA

Years w/ Firm: **18**

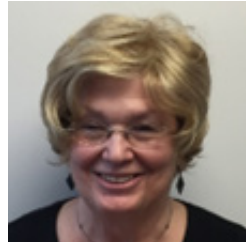
Total Years Experience: **40**

Additional registrations / certifications:

Availability: **Available immediately**

Applicant Office Address:

**8 Saratoga St.
Lido Beach, NY 11561**



Judi has over 40 years of experience in the health care field. Over the last 18 years, she has consulted and developed mental health program and suicide prevention management solutions for community mental health, juvenile and correctional systems throughout the country. Her project experience encompasses strategic planning, cross-system (human services and juvenile/criminal justice) planning and implementation, and data-driven program solutions.

Camden County Juvenile Detention Facility Healthcare Contract Monitor - Camden, NJ

Lead contract monitor for P/BA's contractual health care monitoring services at the Camden County Juvenile Detention Facility since 2009. Services include staffing and service delivery monitoring.

Jetson and Swanson Centers for Youth, LA Office of Juvenile Justice - Baton Rouge, LA

Medical and mental health consultant for two new juvenile facilities--the new Jetson Center for Youth in Baton Rouge and the Swanson Center in Monroe, replacing older facilities deemed to be non-conducive to the type of therapeutic environment necessary to serve the youth. The two new 72 bed treatment campuses specialize in mental health housing, plus extensive vocational programming, education and other essential services. The project mission is to create new campuses to strengthen the development of a new vision for Intensive Residential Care based on a therapeutic model of treatment, particularly for those juveniles with behavioral health problems.

Baylor Women's Correctional Institution, Women's Mental Health Treatment Facility - DE

Medical and mental health consultant for new 50-bed mental health treatment unit at the existing Baylor Women's Facility, which is the single facility for the state housing both pre-trial and sentenced female offenders. Analyzed the mental health needs for all the women housed at the facility and developed the operational and architectural program and the staffing and operating as well as conceptual design support services.

Palm Beach County Juvenile Detention - Palm Beach County, FL

Medical and mental health consultant for a 70 bed juvenile detention component for juveniles to be housed on the Palm Beach County detention center campus. The co-ed facility offers a full range of educational services as well as medical and mental health treatment services following evidence based best practice



3. Resumes

WOLA, LLC | WBE

Landscape Architecture

Kathryn Ostermier, RLA

Project Role: **PM, Landscape Architect**

MA Registration Type and #:

Landscape Architect #4295

Years w/ Firm: **3.5**

Total Years Experience: **10**

Additional registrations / certifications:

NY and CT

Availability: **100%**

Applicant Office Address:

**5 Upland Road
Watertown, MA 02472**

Marshall Park Masterplan & Community Engagement: Project Manager. Worked closely with the Lunenburg, MA Parks Commission to develop a Master Plan that better serves the Town's diverse recreation needs.

Mount Wachusett Community College: Sub-consultant to Kuhn Riddle Architects as part of House Doctor contract. Completed study to renovate tennis courts and provide ADA access from campus to courts. Study included environmental permitting / regulatory review, site analysis, and schematic design.

Smith College: Washburn House Improvements, Principal in Charge. Enhanced accessibility, integration of walkways between adjacent buildings, and the careful location of bike racks and site lighting to strengthen the campus landscape identity while increasing safety.

Amherst College: Johnson Chapel Accessibility Study: Principal in Charge. Planning and grading study which identified walkways for grading adjustments to provide ADA accessible connections between key buildings around central quadrangle. Schematic design through construction documents; construction began in 2021.

WOLA, LLC | WBE

Landscape Architecture

Emily Wright, RLA

Project Role: **PIC - Landscape Architect**

MA Registration Type and #:

Landscape Architect #4277

Years w/ Firm: **3.5**

Total Years Experience: **11**

Additional registrations / certifications:

NY

Availability: **100%**

Applicant Office Address:

**126 Main Street
Northampton, MA 01060**

Massachusetts College of Liberal Arts Quadrangle Design Study: Project Manager. Project with Kuhn Riddle Architects to evaluate ADA access and stormwater resilience across the central campus quad

Smith College Washburn House Accessibility Improvements: Project Manager. Enhanced accessibility, integration of walkways between adjacent buildings, and the careful location of bike racks and site lighting to strengthen the campus landscape identity and to increase safety.

Amherst College Quadrangle ADA Accessibility Improvements: Project Manager. Planning and grading study which identified walkways for grading adjustments to provide ADA accessible connections between key buildings around central quadrangle. Schematic design through construction documents; construction began in 2021.

Smith College Health Services Building: Project Manager while working at the Berkshire Design Group. Developed creative solutions for fitting a much-needed new Health Services Building into a complicated site. Maximized parking and accessible routes while blending the new landscape into the existing historic campus context.

Providence College Campus Master Plan and Implementation: Project Manager while at SLAM Collaborative. Planning study and implementation of a two phase campus transformation. Integration of both upper and lower campuses through the closing of a bisecting roadway to create a more unified, pedestrian-friendly, park-like campus for the College's 2017 Centennial.



3. Resumes

WOLA, LLC | WBE

Landscape Architecture

Allyson Fairweather

Project Role: **Landscape Designer -
Visioning/Stakeholder Engagement**

MA Registration Type and #:

Years w/ Firm: **2.5**

Total Years Experience: **2.5**

Additional registrations / certifications:

Availability: **100%**

Applicant Office Address:

**126 Main Street
Northampton, MA 01060**

Correctional Landscape Studies: Increasing the Restorative Potential - Massachusetts Correctional Institute for Women, Framingham: Graduate masters thesis project, UMASS Amherst. Studied the intersection between landscape architecture, restorative environments, and prison reform. Lead a volunteer workshop with incarcerated women that informed the final master plan and landscape design improvements to address accessibility, safety, and improved quality of life for offenders, staff, and visitors, alike. Awarded 2020 LAF Graduate Olmsted Scholar.

Bement School Nature Playscape: Graduate independent study, UMASS Amherst. Lead workshops to identify the unique needs of both staff and K-9 students. The final deliverables included a report to summarize insights gained from the workshops, a summary of the benefits of nature-based play environments, and a preliminary landscape design concept. Project was awarded the LAF 2020 Steven G. King Play Environments Scholarship.

Girls Inc of the Valley, Holyoke: Landscape designer. Assisted with a regulatory review, existing conditions evaluation, spacial programing, and preliminary design test-fits to deliver a well-rounded and thorough starting point for a conceptual cost estimate.

Montachusett Opportunity Council: Hosmer Playground, Fitchburg: Landscape designer. Helped develop a new playground design for the Hosmer childcare facility. The facility is a critical community resource for low-income families. Because resources are limited, WOLA developed innovative approaches to outdoor play that are fun, safe, and efficient to maximize MOC's investment in the property.



3. Resumes

**Golam Mustafa, PE, LEED AP,
MCPPPO Certified**

Project Role: **PIC for Mechanical/
Plumbing and Fire Protection**

MA Registration Type and #:
Mechanical Engineer #41455

Years w/ Firm: **11**

Total Years Experience: **30**

Additional registrations / certifications:

Availability: **80%**

Applicant Office Address:
**534 New State Highway
Suite 5
Raynham, MA 02767**

Mr. Mustafa has over 30 years of experience in Mechanical (M/P/FP) Engineering. During this time, he has been involved in all areas of mechanical (HVAC, Plumbing & Fire Protection) system design, construction administration, budgeting, scheduling, and economic feasibility studies. He is managing a group of mechanical/ Electrical/ Plumbing/ Fire Protection engineers, designers, and drafters under his direct supervision, managed projects within budget and schedules; and checked projects for quality controls.

Taunton State Hospital Chambers: Provided Mechanical (M/P/FP) Systems engineering Design and CA Services for the renovation of Chambers building at Taunton State Hospital.

Medical Intake Facility at Worcester County Jail and House of Correction: Provided MEP-FP Engineering Project Management for a new Medical Intake building at Worcester County Jail and House of Correction Facility.

Dartmouth County Jail and House of Correction: Provided MEP-FP Engineering Services for the renovation of Dartmouth County Jail and House of Correction Facility.

MASAC (Massachusetts Alcohol and Substance Abuse Center), Plymouth: Providing Project Management for Electrical Engineering Services for the MASAC (Massachusetts Alcohol and Substance Abuse Center) Plymouth Project.

University of Massachusetts Dartmouth: Provided Mechanical (M/P/FP) Systems engineering Design and CA Services for the renovation of Willow Hall, Evergreen Hall, Hickory Hall, Birch Hall, Aspen Hall, Ivy Hall, Violette Hall, Roberts Hall and Chestnut Hall at University of Massachusetts, Dartmouth.

Parenzo Hall, Westfield State University:

Provided Mechanical (M/P/FP) Systems DCAMM Certifiable Study, M/P/FP Systems engineering Design and CA Services for the renovation of Parenzo Hall at Westfield State University in Westfield, Massachusetts.

Massasoit Community College, Brockton & Canton Campus: Provided Mechanical (M/P/FP) Systems engineering Design and CA Services for the renovation of multiple projects at Massasoit Community College of Brockton Campus and Canton Campus.

Bowditch Hall, Salem State University: Provided Mechanical (M/P/FP) Systems engineering Design and CA Services for the renovation of Bowditch Hall at Salem State University.

Scanlon Hall, Westfield State University: Provided Mechanical (M/P/FP) Systems engineering Study, Design and CA Services for the renovation of Scanlon Hall at Westfield State University, in Westfield, Massachusetts.



3. Resumes

William R. Maher, PE, LSIT

Project Role: **Civil Engineering PM**

MA Registration Type and #:
Professional Engineer (Civil) 41669

Years w/ Firm: **21**

Total Years Experience: **38**

Additional registrations / certifications:
Land Surveyor-In-Training, #767
Soil Evaluator, #SE1458
Title V System Inspector, #SI1851
Licensed Concrete Tech, #CTPR001443

Availability: **15%**

Applicant Office Address:
2 Center Plaza, Suite 430
Boston, MA 02108

Middleton Jail, Inmate Services Building Replacement, Middleton, MA: Project Manager for civil engineering services for the Inmate Services Building of Middleton Jail Facility. Reviewed record documents and conducting interviews with facilities personnel staff for preparation of an existing conditions utilities report. Preparing conceptual design drawings of the site layout, grading, and site utility improvements. Preparing a Conceptual Site Engineering Narrative of Nitsch's site utility improvement recommendations and will update to reflect Client's preferred development alternative. Preparing final Conceptual Site Utility Plan reflecting Client's preferred development alternative. Reviewing cost estimates relative to Nitsch's site design elements for preferred option.

Haverhill District Court, Haverhill, MA: Project Manager for civil engineering services to support the development of a study for the Haverhill District Court Building and subsequent renovation of and addition to the existing courthouse. The project included reconstruction of the parking lot including striping and signage, regrading, and designing Americans with Disabilities Act (ADA)-compliant parking. Designed new utilities for the addition (drainage) and new gas and electric utilities (transformer and generator).

Wall Experiment Station, Lawrence, MA: Project Manager for civil engineering services related to the renovation of an existing building and a new building addition. Designed the site's utilities, including a new stormwater system that incorporates BMP design requirements and parking lot improvements. Also permitted the project with the City of Lawrence Conservation Commission. The project earned LEED Platinum certification.



3. Resumes

Jensen Hughes, Inc.

MA Building Code Consultant

Ted Dow, PE

Project Role: **Project Manager/Code Consultant**

MA Registration Type and #:
PE (Fire Protection) MA (# 47848)

Years w/ Firm: **4**

Total Years Experience: **18**

Additional registrations / certifications:

Availability: **30%**

Applicant Office Address:

Jensen Hughes, Inc.
One Research Drive, Suite 305C
Westborough, MA 01581

Mr. Ted Dow will serve as Project Manager. He is a Senior Fire Protection Engineer dedicated to the analysis of building code requirements and their intent relative to the fire-safe design of all structure types. He specializes in fire and life safety master planning, accessibility code analysis and plan review, and complex code issue analysis and equivalency development. He oversees all significant code-related evaluations of fire protection and life safety facilities, including fire safety design reviews, building surveys, fire system designs, and assessments of fire hazards. Facility types include large mixed-use developments; research and instructional laboratories; educational facilities; and residential and institutional multi-tenanted housing.

Selected Project Experience:

DCAMM John W. McCormack Building – Track 1, Boston, MA

DCAMM John W. McCormack Building – Track 2 & 3, Boston, MA

DCAMM John W. McCormack Building, Multi-Tenant Fit Out and Electrical Closet, Upgrades, Boston, MA

Gordie Howe International Bridge (GHIB) United States Land Port of Entry (LPOE), Detroit, MI



3. Resumes

Kevin Donovan

Project Role: **Hazardous Materials Consultant**

MA Registration Type and #:
Asbestos Inspector #AI002014;
Asbestos Project Monitor
#AM001856; Asbestos Project
Designer #AD034039

Years w/ Firm: **9**

Total Years Experience: **31**

Additional registrations / certifications:
8-hr HAZWOPER; 40-hr
HAZWOPER; NIOSH 582; OSHA
10-hr

Availability: **25%**

Applicant Office Address:
105 Central Street
Suite 4100, Stoneham, MA 02180

Kevin Donovan has 30 years of experience conducting comprehensive asbestos surveys and asbestos inventory. Kevin has conducted pre-renovation/demolition surveys, abatement design and VA specification preparation, and abatement project monitoring for asbestos and lead. He has conducted inspections of various facilities for asbestos and written asbestos abatement work plans and specifications. Kevin provides expertise regarding regulated building materials management and regulations. Relevant projects include:

- DCAMM, Worcester County Jail & House of Corrections: Removal and Abatement of Former Buried Hot Water Pipes, Worcester, MA
- DCAMM, DPH Tewksbury State Hospital, Saunders Roof Replacement Study, Tewksbury, MA
- US Department of Veterans Affairs (VA), Asbestos Inspection & Crawlspace Survey, Brockton & Jamaica Plain, MA
- VA, Hazardous Materials Inspection, Brockton, MA
- VA, A/E Design Services for Relocation & Renovation of Rehabilitation Medicine Project, Asbestos & Lead Abatement Monitoring, Bedford, MA
- VA, Office of Asset Enterprise Management, Due Diligence Vacant Building Vacant Building Survey, Asbestos & Lead-Based Paint Surveys, MA, ME, NH, CT, NY, NJ, PA
- Swampscott & Nauset Public Schools, Asbestos Inspection Services, Swampscott, Nauset MA
- General Electric, Project Monitoring Services in Support of Building Demolition, Lynn, MA
- Sprague Power Plant, Asbestos Inspection, New Bedford, MA

3. Resumes

Clive Tysoe

Project Role: **Cost Estimator**

MA Registration Type and #: **NA**

Years w/ Firm: **4**

Total Years Experience: **44**

Additional registrations / certifications:

Associate Member of RICS

Availability: **25%**

Applicant Office Address:

98 North Washington Street

Suite 109

Boston, MA 02114

Mr. Tysoe has over 40 years of experience in cost estimating, quantity surveying, internationally and regionally. His experience in the UK, USA and overseas covers many sectors of the construction industry and his strong focus on client satisfaction and managing expectations provides a great benefit especially on larger, more complex projects. His experience involves projects ranging from small projects to multimillion dollar endeavors. Mr. Tysoe has assisted on several value engineering workshops, providing an opportunity to the clients to re-evaluate the design and cost of their project. His broad base of construction knowledge and experience gives clients valuable advice and the ability to make informed decisions early in the design process.

DCAMM Middleton Jail ISB Replacement Study, Middleton, MA

This project involves providing cost estimating services for the current 2-level Middleton Jail Inmate Services Building Replacement study. The purpose of this project is to assess the building to identify alternative approaches to the project phasing and development.

Various MEP projects for UMass Campuses, Various, MA

These projects involve providing cost estimating service for construction of MEP upgrade works at UMass campuses. The estimates are used to develop budgets or for tracking design work against budgets. Projects include: UMass Lowell Redundant Feeder, UMass Lowell Tsongas Area HVAC, Sheehan & Concordia Hall, UMass Olney Hall Lab Renovations, UMass Costello Gym, Tsongas Arena HVAC Upgrade, UML Generator Study, UML North Quad Electrical, UML Redundant and Electrical feeder.

DCAMM Electrical Upgrades at 4 Campuses, Various, MA

This project involves providing cost estimating consultant service for electrical upgrades over four higher education facilities. The campuses involved were NECC, QCC, WSU and Fitchburg.

DCAMM Massachusetts State House - Water Infiltration Repairs, Boston, MA

As a part of larger measures to extend the life of The Massachusetts State House building, DCAMM needed to upgrade the waterproofing. This project involved providing cost-estimating. Given the high-profile nature, unique challenges and their subsequent costs had to be taken into consideration. The water infiltration that was occurring was mostly associated with skylights, walkways, and staircases at the exterior. The engineer's work involved the dismantling and re-building of a large portion of the stone work, pavers, balustrades, and stone treads. Historic preservation practices played a significant role.

DCAMM North Point Maintenance Building, Cambridge, MA

This project involves providing cost estimating consultant service for change order evaluation on civil works at North Point Maintenance Building. The estimates are used to negotiate resolution with the contractors.



4. Prime Experience

SMRT Architects and Engineers

Services Provided: Architecture, Planning, M/E/P Engineering, Structural, Landscape, Interiors

Project Team

PIC: Arthur Thompson, AIA

PM: Graham Vickers, AIA

Other key team members:

See teal box to right

Date Completed: **2017**

Location: **Windham, ME**

Construction Cost: **\$7.7M**

Client Contact Info:

**Maine Department of
Corrections**

**25 Tyson Drive 3rd fl.
State House Station 111
Augusta, Maine 04333**

**Gary Laplante
Director of Operations
207.287.2711**

MEDOC Women's Reentry Center - Windham, ME

"Waves of Change, Oceans of Possibilities" was the theme coined by the (at the time) future residents of the MWRC. The women were excited to participate in the visioning for a facility that would emulate and expand upon the cutting edge, gender responsive programming that the MDOC was developing.

Rehabilitation, education and preparation for a positive reentry to society—these outcomes informed SMRT and P/BA's gender responsive programming and design for this 96-bed reentry facility. This brand-new model, based on a more normalized, living room style organization, was designed to house minimum-security and community-release status women transitioning back to society. As of Q4 2020 this facility houses over 2/3 of the state's entire women's population evidence of a successful program run by MEDOC and the importance of aligning facility typology with system wide programmatic goals.

A residential and educational aesthetic anticipates the transition from the corrections environment and contributes to reduced recidivism rates. Residents can leave to go to work or volunteer opportunities and return to the facility to participate in instructional and wellness programming in the classrooms, yoga studio, teaching kitchen and on-site vegetable gardens.

Relevance:

- Trauma-informed design to create welcoming and therapeutic spaces
- Focus on the health, wellbeing, and rehabilitation of the female population
- Normative environment
- Female inmates and correctional officers at the center of the design



**Key team members & consultants
assigned to this contract who
worked on this project:**

- Pulitzer/Bogard & Associates



4. Prime Experience

SMRT Architects and Engineers

Services Provided: Architecture, M/E/P Engineering, Structural, Landscape, Interiors

Project Team

PIC: Graham Vickers, AIA

PM: John Tobin, AIA

Other key team members:

See teal box to right

Date Completed: **2022 (design)**

Location: **Albany, NY**

Construction Cost: **\$10M**

Client Contact Info:

Albany County Purchasing

112 State Street, Room 820

Albany, NY 12207

Karen Storm

518.447.7140

karen.storm@albanycountyny.gov

Capital District Juvenile Detention Center Addition and Renovation

The new, updated facility will support a more all-encompassing program model in an educational environment with discreet, yet robust security features. Traditionally a regional Juvenile facility, it is now transitioning to a facility that can accommodate both Juvenile and Adolescent Offenders. Upon realizing facility upgrades and additional beds would be required, Albany, Schenectady, Saratoga and Rensselaer Counties contracted with SMRT for guidance through this new regulatory environment.

Working with both the New York State Commission on Corrections (NYCOC) and the Office of Child and Family Services (OCFS), SMRT led the Capital District Counties through the necessary operational and physical plant modifications needed to serve their new classification system. SMRT provided full-service design and planning services from an initial building assessment, to itemized repairs and renovations required in the existing facility and design of major building additions. The final design solution includes three main additions, including administrative space, housing areas and a new secure vehicle sally port. Renovations will take place throughout the existing facility following a structured phasing plan provided by SMRT.

Relevance:

- Designed for multiple classification of juvenile detainees
- Updates and additions balance hardware-secure features with a normative environmentl focused on providing a safe and secure space for healing, learning and growing.

Key team members & consultants assigned to this contract who worked on this project:

- Michael Pentella- SMRT
- Robert March- SMRT



4. Prime Experience

SMRT Architects and Engineers

Services Provided: Architecture, M/E/P Engineering, Structural, Landscape, Interiors

Project Team

PIC: Arthur Thompson, AIA

PM: Dennis Morin, AIA

Other key team members:

See teal box to right

Date Completed: **2017**

Location: **Concord, NH**

Construction Cost: **\$35M**

Client Contact Info:

NH Dept of Administrative Services

7 Hazen Drive, Room 250

Concord, NH 03302

Timothy Smith

Project Manager

603.271.1643

New Hampshire Correctional Facility for Women - Concord, NH

The New Hampshire Correctional Facility for Women is a 224-bed, 112,000 s.f. facility that houses all classifications of the female population in two buildings. Driven by a Gender Responsive program and the goal of creating a facility organized around an open “college green”, the design responds to the difference in female inmates’ needs and life experiences. Program space was all designed for multiple uses – the gym was sized and located specifically to accommodate the annual mothers-day event that brings family in for a day of activities with their loved ones.

This campus style correctional facility also provides unique housing opportunities to facilitate a smooth step-down process and a successful re-entry into society. Highlighted program elements included a full correctional kitchen, dining hall, laundry service, health clinic and medical support services, and visitation.

Relevance:

- Correctional facility
- Trauma-informed design to create welcoming and therapeutic spaces
- Focus on the health, wellbeing, and rehabilitation of the female population
- Female inmates and correctional officers at the center of the design
- Forward thinking sustainable buildings
- On-site women’s mental and medical health services, vocational programs aligned with women’s interests, visiting area with a playroom for children



Key team members & consultants assigned to this contract who worked on this project:

- Graham Vickers- SMRT
- Pulitzer/Bogard & Associates
- Jensen Hughes



4. Prime Experience

SMRT Architects and Engineers

Services Provided: Architecture, Programming, M/E/P Engineering, Structural, Landscape, Interiors

Project Team

PIC: Arthur Thompson, AIA

Architect: Graham Vickers, AIA

Other key team members:

See teal box to right

Date Completed: **2013**

Location: **San Juan, PR**

Construction Cost: **Unknown**

Client Contact Info:

Caribbean Project Management, PC

PO BOX 9024051

San Juan, PR 00902-4051

Puerto Rico Juvenile Facility

SMRT provided procurement documents for the design and construction of a new full service, 600-bed facility. The facility will house pre- and post-adjudicated juveniles. Males, females and the four classifications within the population require separation from each other. The facility is designed along an education model and includes a full program of support spaces including classrooms, library, healthcare, mental health services, etc.

Due to the remoteness of the site, a court facility including two courtrooms, a mediation room, deposition room, evidence storage and judge's chambers was added to the Administration Building.

The development's campus style layout will separate buildings for the various housing units, programs, education, healthcare, etc. that are connected by covered walkways. The facility will be realized under a public/private partnership arrangement.

The project will be realized as part of a public private partnership delivery model, (P-3), so the team developed all of the bridging documents including schematic level designs, technical performance specifications, give back requirements, spatial priority lists, etc.

Relevance:

- Designed for multiple classifications of juvenile detainees
- Balanced approach to providing a secure environment modeled after an educational facility

Key team members & consultants assigned to this contract who worked on this project:

- Dennis Morin- SMRT
- Pulitzer/Bogard & Associates



4. Prime Experience

Project Team

PIC: Arthur Thompson, AIA

PM: Janet Hansen, AIA

Other key team members:

See teal box to right

Date Completed: **2001**

Location: **South Portland, ME**

Construction Cost: **\$27M**

Client Contact Info:

**Maine Department of
Corrections**

**25 Tyson Drive 3rd fl.
State House Station 111
Augusta, Maine 04333**

**Gary Laplante
Director of Operations
207.287.2711**

Longcreek Youth Development Center

The Long Creek Development Center operates under a direct supervision concept. The facility is self-contained and is an addition to the existing facility. The Southern Maine complex was constructed on the site of the Maine Youth Center, one of the oldest juvenile facilities of its type in the country. While most of the buildings were in poor condition and were not to be re-used, a few of the buildings were renovated and incorporated into the new complex.

The normalized environment of the new juvenile facility focuses on using specialized learning units of a core program to step-by-step re-educate the juvenile offenders. Each of the living units housing between 24 and 36 juveniles has 3 smaller units to allow age level segregation. The three units share a central dayroom where group activities can take place. In addition, 2 classrooms can be accessed either through the dayroom for evening core programs or from the central corridor for daytime school related classes.

Other common shared spaces include a full-size gymnasium, library, activity room with game tables and craft areas, a music room and a computer room. All of these rooms can be utilized by juveniles for extra-curricular, evening activities.

Relevance:

- Hardware-secure juvenile facility designed for learning, rehabilitation and growing.
- Designed for multiple classification of juvenile detainees.
- Located in a larger existing historic campus.
- Project began with existing building evaluations



Key team members & consultants assigned to this contract who worked on this project:

- Arthur Thompson- SMRT
- Dennis Morin- SMRT
- Pulitzer/Bogard & Associates

4b. Sub Consultant Experience

Pulitzer/Bogard & Associates LLC

Services Provided: Corrections Planning

Location: **Franklin, TN**

Date Completed: **Est. 2025**

Project Team: **PIC - Curtiss Pulitzer**

Construction Cost: **\$75M**

Client: **Williamson County Office of the Mayor, Williamson County Juvenile Services, Williamson County Juvenile Courts, Williamson County Office of the Clerk, Williamson County Schools**

Project Relevance:

- Juvenile facility
- Sense of community
- Flexibility & cross-functionality
- Therapeutic design
- Integration of sustainability and wellness
- Universal design
- Opportunities for art
- Learning environment supporting skill building, peer learning and personal growth

Williamson County Juvenile Justice Center

Williamson County is a rapidly growing county in Tennessee, with its population expected to double within the next decade. The existing Juvenile Detention facility, Juvenile Courts, Juvenile Services, and Clerk's Office were significantly undersized to accommodate the existing population, much less the projected growth for the County.

In 2019, PB/A, in association with Gresham Smith Architects, completed a Master Plan for the County which addressed the future needs of the Jail, Sheriff's Office, Courts, and all of the County's agencies involved in its juvenile justice system. Also included was an assessment of the needs of the County's Alternative Learning Center for youths who were experiencing behavioral issues in their regular schools.

The Master Plan was adopted by the County in 2020 and plans for a new Juvenile Justice Center (JJC), as well as a new adult jail and offices for the Sheriff, were initiated. The JJC was the first component to proceed forward in planning, design, and development.

The new JJC is a state-of-the-art facility, incorporating into a single building a new Juvenile Detention Center, an Intake Processing Center for the determination of least restrictive placement for all juveniles, a Behavioral Services Unit, a staff-secure Respite Center for youths that do not require secure placement, Juvenile Courts, the Clerk's Offices, and offices for Juvenile Services. The intent is that with all of these services consolidated into one location, the building will become a resource for youths and their families, and youths experiencing problems with the law can receive a spectrum of services. In addition, the Alternative Learning Center, an innovative collaborative learning environment operated by Williamson County Schools, is also located on the site. The students at this school can receive behavioral support services as part of their educational services. The school has its own distinct identity, physical orientation, and entrance.



Williamson County Juvenile Justice Center and Alternative Learning Center site plan



4b. Sub Consultant Experience

Pulitzer/Bogard & Associates LLC

Services Provided: Corrections Planning

Location: **New York City, NY**

Date Completed: **2019**

Project Team: **PIC - Curtiss Pulitzer**

Construction Cost: **\$529M**

Client Contact: **New York City
Department of Design and
Construction, NYC Mayor's Office of
Criminal Justice, NYC Administration
for Children's Services**

Project Relevance:

- Juvenile facility
- Sense of community
- Flexibility & cross-functionality
- Therapeutic design
- Integration of sustainability and wellness
- Universal design
- Integration into existing communities
- Opportunities for art
- Learning environment supporting skill building, peer learning and personal growth



New York City Crossroads and Horizon Juvenile Centers Redevelopment

New York State passed legislation and the Governor signed into law a “Raise the Age” initiative that changed the age of adult responsibility from 16 to 18, thereby transferring responsibility for the adolescent population from the Department of Correction to the New York City Administration for Children’s Services (ACS). The City had 18 months to remove the 16-17 (sometimes 18) year old adolescents from Rikers Island to an alternative location.

P/BA, in association with Urbahn Architects, assisted the City of New York in developing a plan to consolidate the juvenile detention population (ages 15 and under), then housed in two facilities, into a single facility at the site of the current center in Brooklyn (Crossroads). On an overlapping track, we were tasked with developing the program for a new 256 bed facility at the site of the current Bronx juvenile facility (Horizon) to accommodate the relocation of 16- and 17-year-old adolescents.

The initial work addressed compliance with health and safety, new regulations from the NYS Office of Children and Family Services and the State Commission of Correction, user agency and union requirements, critical program enhancements, and physical improvements to extend the buildings’ service life. Longer-range redevelopment involved 87,000 sf of renovations and 106,000 sf of additional building footprint to accommodate progressive programmatic enhancements, as well as an off-site 16-bed staff--secure juvenile intake/assessment center.

Having met that critical 18-month deadline, we were then able to address program deficiencies, deferred maintenance and obsolete building systems during Phase 2. The City’s objective to provide humane treatment in a program rich environment resulted in major changes to both facilities to provide for ACS’s ambitious programmatic objectives and to present a new physical structure that embraces families and community.



Horizon



Crossroads



4b. Sub Consultant Experience

Pulitzer/Bogard & Associates LLC

Services Provided: Corrections Planning

Location: **New York City, NY**

Date Completed: **2017**

Project Team: **PIC - Curtiss Pulitzer**

Construction Cost: **\$529M**

Client Contact: **New York City
Department of Design and
Construction, NYC Mayor's Office of
Criminal Justice, NYC Administration
for Children's Services**

Project Relevance:

- Juvenile facility
- Sense of community
- Flexibility & cross-functionality
- Therapeutic design
- Integration of sustainability and wellness
- Universal design
- Integration into existing communities
- Opportunities for art
- Learning environment supporting skill building, peer learning and personal growth

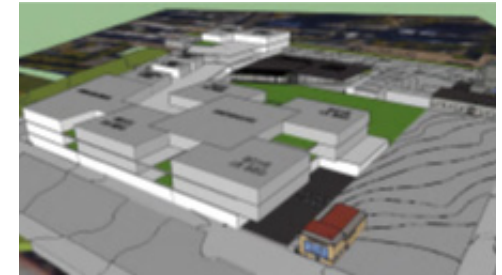
New York City Juvenile Justice Facilities Master Plan

The objective of the New York City Juvenile Justice Facilities Master Plan was to provide a trauma-informed therapeutic approach to facility design and programming in the City's juvenile justice facilities to help steer troubled youths away from the cycle of recidivism.

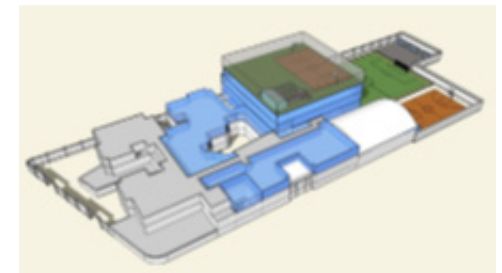
The initial Master Plan mapped out the replacement of two juvenile centers encompassing 490,000 sf. The two facilities were close to 40 years old, were not in keeping with current best practices, and did not have the capacity to meet the therapeutic and programmatic goals of the NYC Administration for Children's Services. At the outset of the project the team, along with the user agencies, toured a range of juvenile justice centers along the Eastern Seaboard to establish a baseline of best practices.

The study involved the assessment of the Crossroads and Horizon Juvenile Centers and potential sites for swing space, and the phased replacement of both centers. We developed detailed operational and space programs, functional adjacency diagrams, conceptual plans and design visualizations, building systems strategies, staffing and budgetary cost estimates, and implementation plans. The plan also included adaptive retrofits of existing structures to serve as Intake/Assessment Centers and non-secure residences.

P/BA worked with Urbahn Architects to develop model design concepts that were rich in programs, addressing a full spectrum of needs: psychiatric, educational, therapeutic, spiritual, medical, social and recreational. We conceived colorful, normative and homelike milieus rather than traditional institutional environments. Offices for mental health professionals and social workers were relocated to inside the housing units in order to provide a comprehensive team-based treatment program for



Horizon



Crossroads



4b. Sub Consultant Experience

Pulitzer/Bogard & Associates LLC

Services Provided: Corrections Planning

Location: **Houston, TX**

Date Completed: **2018**

Project Team: **PIC - Curtiss Pulitzer**

Construction Cost: **\$92M**

Client: **Harris County Juvenile Probation Department**

Project Relevance:

- Juvenile facility
- Sense of community
- Flexibility & cross-functionality
- Therapeutic design
- Integration of sustainability and wellness
- Universal design
- Learning environment supporting skill building, peer learning and personal growth

Harris County Juvenile Detention Center

P/BA worked with the project architect, PGAL, to serve in the role of operations specialists, facility programmers and design consultants for the new juvenile detention facility to be operated by the Harris County Juvenile Probation Department. The new facility would house 208 pre-adjudicated and 112 post-adjudicated juveniles up to the age of 17. A key focus of the new \$75 million facility was to provide specialized mental health services to the juveniles with behavioral health diagnoses and to provide the Judiciary an alternative location to state-run facilities for Harris County youth to receive enhanced treatment and programmatic services closer to their families.

The main objective of the facility was to house both pre-adjudication and post-adjudication juveniles in one building in separate housing areas, but with shared core services and program areas. The challenge was to maintain sight and sound separation between the two populations at all times, while maximizing the shared resources for both populations. The facility also housed both male and female juveniles, keeping regulated separations where appropriate, but allowing for co-educational programs during school.

The solution was to provide leisure, mental health, therapeutic and recreational programming to one population in the morning while the other population was in school, and then swap in the afternoon. The housing units were designed in a unique way to provide for a large, shared space directly accessible from the housing units for therapeutic and leisure programs, to minimize travel and to prevent the possibility of the different populations crossing paths. Education, the gymnasium, and facility services were located in a central spine, accessible from both the pre- and post-adjudication housing wings.

Harris County Juvenile Detention Center



4b. Sub Consultant Experience

Pulitzer/Bogard & Associates LLC

Services Provided: Corrections Planning

Location: **Baton Rouge, LA**

Date Completed: **2016**

Project Team: **PIC - Curtiss Pulitzer**

Construction Cost: **\$28.125M per project**

Client: **State Office of Juvenile Justice**

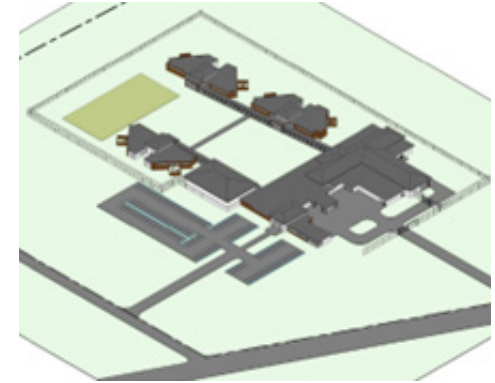
Project Relevance:

- Juvenile facility
- Flexibility & cross-functionality
- Therapeutic design
- Integration of sustainability and wellness
- Universal design

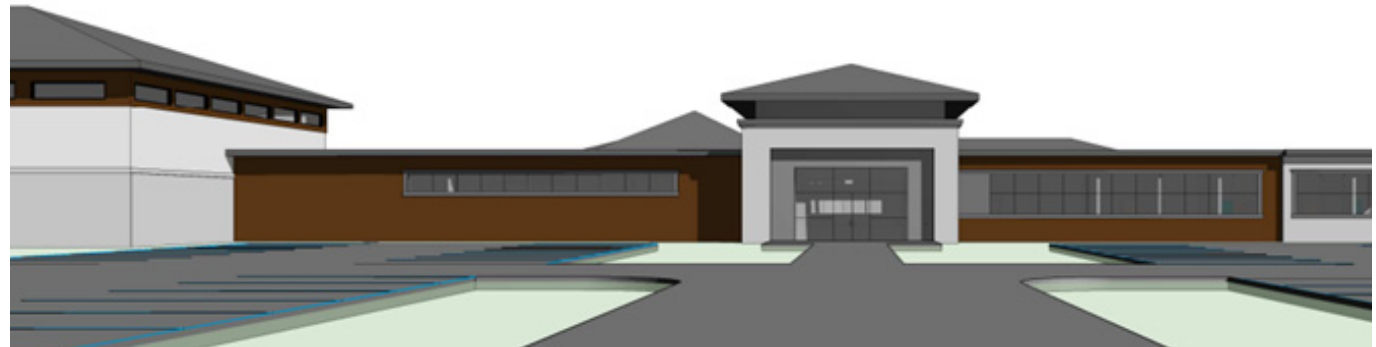
Jetson and Swanson Centers for Youth

P/BA provided programming and design review services for two new juvenile facilities to be operated by the State Office of Juvenile Justice: the new Jetson Center for Youth in Baton Rouge and the Swanson Center in Monroe. The new facilities were intended to replace older facilities that were not deemed to be conducive to the type of therapeutic environment necessary to serve the youth.

The project mission was to create new campuses for the Office of Juvenile Justice to strengthen the development of a new vision for Intensive Residential Care based on a therapeutic model of treatment, in particular for those juveniles with behavioral health problems. We were teamed with Grace Hebert Architects on these projects.



Jetson Center site plan



4b. Sub Consultant Experience

WOLA, LLC | WBE

Services Provided: Landscape Architecture

Project Team:

Principal in Charge - Kathryn Ostermier

Project Manager - Emily Wright

Date Completed: **August 2021**

Location: **Amherst, MA**

Construction Cost:

\$200,000 (landscape scope)

Client:

Tom Davies

413.542.8272

tdavies@amherst.edu

Design & Construction / Facilities

Amherst College

220 South Pleasant Street

Amherst, MA

Amherst College Historic Quadrangle

The historic Quadrangle at Amherst college is the cultural center of Amherst College: each year, beneath its heritage trees and looking up at the Johnson Chapel, Amherst graduates walk across the stage as they graduate.

To increase accessibility, the College undertook an effort to improve ADA access between historic Johnson Chapel and the Robert Frost Library. With a heritage landscape designed by Olmsted, WOLA conceptualized and implemented a thoughtful design which provides access for people of all abilities to move between these two buildings which are core to the identity of Amherst College.

Site grading honors and preserves these important trees, while addressing a steep site condition and integrating seamlessly with the existing campus walkways in a cost effective manner. New granite stairs and curbing, as well as campus standard railing, gives the project a high level of finish and ensures it will serve Amherst for years to come.



4b. Sub Consultant Experience

WOLA, LLC | WBE

Services Provided: Landscape Architecture

Project Team:

Principal in Charge - Emily Wright

Project Manager - Kathryn Ostermier

Date Completed: **Spring 2021**

Location: **Gardner, MA**

Construction Cost:

N/A

Client:

Robert LaBonte

**Vice President of Finance and
Administration**

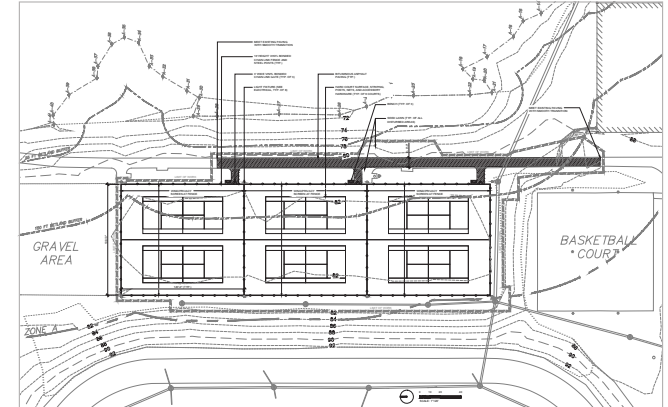
**Mount Wachusett Community College
444 Green Street
Gardner, MA**

DCAMM House Doctor: Mount Wachusett Community College Tennis Court Study

Athletic facilities play an important part in campus life, and Mount Wachusett Community College wanted to understand the process and costs associated with potential improvements and ADA access to their existing tennis courts.

As part of a house doctor contract as sub-consultant to Kuhn Riddle Architects, WOLA was engaged as part of a team to provide a study as the College determined whether to proceed.

As part of the work, WOLA provided existing conditions, regulatory and code review, and schematic design documents as well as a narrative contribution to the study report. This schematic work included grading and drainage to provide ADA and MAAB access from the campus to the tennis courts.



Schematic layout plan



Existing conditions diagram identifies utilities and regulated area



4b. Sub Consultant Experience

WOLA, LLC | WBE

Services Provided: Landscape Architecture

Project Team:

Landscape Designer, Allyson Fairweather

UMASS LARP:

Faculty Chair, Patricia McGirr
Faculty Committee, Michael Davidsohn
Department Chair, Robert Ryan

MCI-F:

Director of Treatment, Taylor MacLellan
Deputy Superintendent of Re-Entry, Kyle Pelletier
Director of Continuing Education, Mary Haynes

Date Completed: **May 2020**

Location: **MCI-Framingham**

Construction Cost:

N/A

Client:

Patricia McGirr
Assistant Chair of Department and Associate Professor of Landscape Architecture
413.545.6621
mcgirr@larp.umass.edu

UMASS Amherst
John Olver Design Building
551 North Pleasant Street
Amherst, MA 01003



Commonwealth of Massachusetts
DSB Application Form

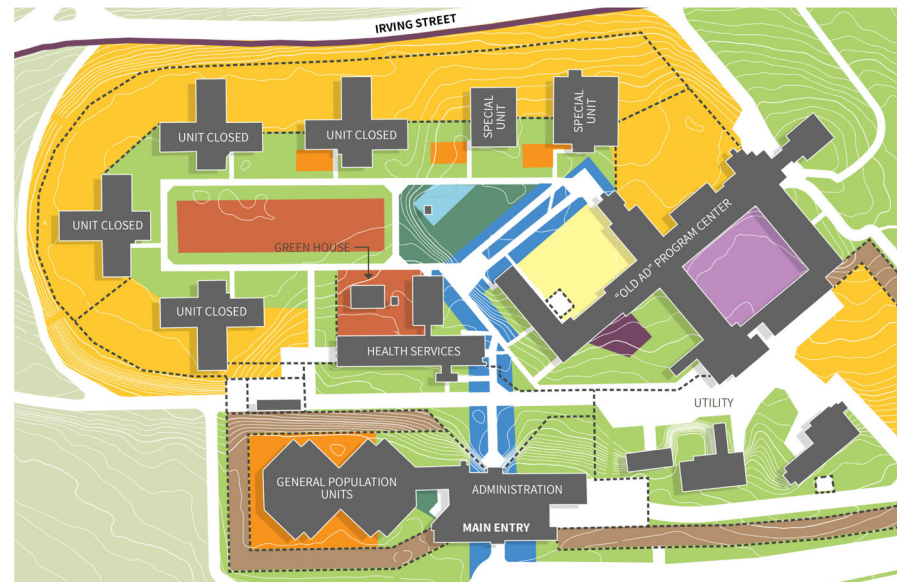
Correctional Landscape Studies: Increasing the Restorative Potential - Massachusetts Correctional Institute for Women, Framingham:

This graduate thesis project synthesizes current trends at the intersection of landscape architecture, restorative environments, and prison reform, and offers a series of adaptable design recommendations aimed to benefit all who experience the correctional landscape.

In collaboration with the Massachusetts Department of Corrections, MCI-F serves as a demonstration site for the application of these recommendations at both a master plan scale and 3-acre focus area. Community

engagement with MCI-F inmates and staff, coupled with analysis of case studies reveals normative design and trauma-informed design strategies as an added layer of consideration for designers. Foundational to this project is environmental justice and human dignity, which asserts the belief that despite the crimes of offenders, people in jail deserve access to the benefits of spending time in nature.

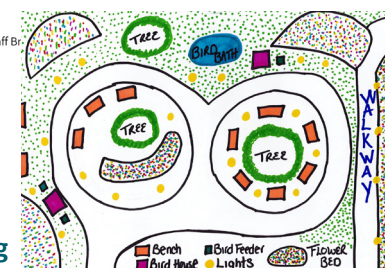
This project highlights ways in which landscape architects can play a pivotal role in helping inmates and correctional officers experience the personal and societal benefits of thoughtfully designed landscapes, to ultimately improve the rehabilitative potential through access to the outdoors.



Proposed Landscape Master Plan

Program

- Ecological Restoration
- Healing Garden
- Everyday Common Area
- Everyday Circulation
- Classroom
- Production Garden
- Unit Gardens
- Recreation
- Staff Br.



MCI-F Inmate Drawing

4b. Sub Consultant Experience

WOLA, LLC | WBE

Services Provided: Landscape Architecture

Project Team:

Principal in Charge - Kathryn Ostermier

Project Manager - Emily Wright

Date Completed: **November 2021**

Location: **North Adams, MA**

Construction Cost:

\$2,600,000 (est.)

Client:

Gina Puc

Vice President of Strategic Initiatives

Massachusetts College of Liberal Arts

375 Church Street

North Adams, MA 01247

DCAMM House Doctor: Massachusetts College of Liberal Arts Campus Quad Study

WOLA analyzed the existing MCLA Campus Quad and surrounding buildings to identify areas in need of improvement, underutilized space, and areas limited by lack of ADA access. This analysis informed the masterplan developed for the Campus Quad which emphasized the removal of an underutilized, aging building and creating multifunctional open spaces. A central accessible “spine” simplifies wayfinding and provides a clear visual corridor between

campus destinations. Green infrastructure systems are proposed to collect and infiltrate stormwater and bring the natural systems currently in place to the forefront of the Quad experience. Stormwater management on campus is a challenge due to the steep topography and amount of impervious surfaces. The Quad Masterplan increases permeable surfaces, adding to the resiliency of the campus fabric.



Bird's eye view of proposed quad improvements

WOLA

4b. Sub Consultant Experience

WOLA, LLC | WBE

Landscape Architecture

Project Name: **Smith College Washburn Renovation**

Location: **Northampton, MA**

Date Completed: **Summer 2020**

Key Members: **Emily Wright, Kathryn Ostermier**

Construction Cost: **\$167,000** (landscape)
\$4,534,000 (architecture)

Client Contact Info:

Peter Gagnon
Director of Capital Improvements
413.585.2406
pgagnon@smith.edu

Project Description:

In coordination with architectural renovation of an existing campus residence hall, landscape architecture scope includes enhanced accessibility, **integration of walkways**, and **site lighting** to strengthen the campus landscape identity while **increasing safety**.

Landscape improvements enhance the **ADA and MAAB** compliant access between Washburn and adjacent buildings.




Project Relevance:

Sensitivity is required to integrate this new porch with the existing Olmsted-designed campus landscape, incorporating additional site features including maintenance-friendly planting fitting of the campus vernacular.

Proposed site lighting will enhance safety while careful grading and detailing **integrates the proposed project seamlessly into the existing campus fabric**.



4b. Sub Consultant Experience

Pristine Engineers, Inc MBE/DBE		Mechanical, Plumbing, Fire Protection Engineering
Worcester County Jail & House of Correction – New Medical Intake Facility Location: West Boylston, MA Date Completed: March 2021 Key Members: Golam Mustafa PE, LEED AP, MCPPO Certified Construction Cost: \$25,000,000 Client Contact Info: Catherine B. Walsh, Project Manager, DCAMM, Email: Catherine.walsh@mass.gov	Project Description: Pristine Engineers, Inc. provided MEP & FP Systems Engineering Feasibility Study, ME & FP Systems Schematic Design, Design Development and Construction Documents and Construction Admin Services of a New Intake Medical Facility for the Worcester County Jail & House of Correctional Facility. Construction completed in 2021 and currently occupied.	Project Relevance: This project is a DCAMM funded secure Facility Project located in West Boylston, Massachusetts. We provided MEP & FP System Study, design, and CA services for this new Medical Intake Facility at Worcester Jail & House of Correctional Facility. 
Bristol County Jail & House of Correction – Roof Replacement and Security System Projects Location: North Dartmouth, MA Date Completed: November 2020 Key Members: Golam Mustafa PE, LEED AP, MCPPO Certified. Construction Cost: \$10,500,000 Client Contact Info: Henry Orville (DCP), DCAMM Project Manager, Email: orville.henry@state.ma.us	Project Description: Pristine Engineers, Inc. provided MEP & FP Systems Engineering Schematic Design, Design Development, Construction Documents, and construction administration Services for the renovations of MEP & FP Systems for the Roof Replacement Project _ DCAMM Project #BSD1801DC1. Project construction completed in November 2020.	Project Relevance: This project is a DCAMM funded Bristol County Jail & Correctional Facility renovations Project. The Correctional Facility is in North Dartmouth, Massachusetts. 
Taunton State Hospital - WRAP and Men's Secured Recovery Facility from Addiction Program. Location: Taunton, MA Date Completed: June 2021 (est) Key Members: Golam Mustafa PE, LEED AP, MCPPO Certified. Construction Cost: \$25,000,000 Client Contact Info: Fred Manigat, RA, DCAMM Project Manager, Phone: 617-727-4050 x31352, Email: fred.manigat@mass.gov	Project Description: Pristine Engineers, Inc. provided MEP & FP Systems Engineering Feasibility Study, Schematic Design, Design Development, Construction Documents design and Construction Admin services for the renovations of Taunton State Hospital's Chambers Building. The Hospital is a secured facility owned by the Department of Mental Health where provides mental health treatment for Women and Man's recovery from the Addition Program. The project construction es estimated to be completed by June 2021.	Project Relevance: This Project is a DCAMM funded Department of Mental Health owned secured facility in Taunton, MA. The Commonwealth of Massachusetts has responded to the opioid crisis in Massachusetts with increased services for substance users. This facility is to provide treatment for the recovery of women and men's recovery from addiction program. 

4b. Sub Consultant Experience

Pristine Engineers, Inc | MBE/DBE

Mechanical, Plumbing, Fire Protection Engineering

Shattuck Hospital Campus Planning MEP&FP Engineering Feasibility Study Services

Location: **Boston, MA**

Date Completed: **Estimated in 2021**

Key Members: **Golam Mustafa PE, LEED AP,**

MCPPO Certified

Construction Cost: **NA**

Client Contact Info: **Amy Winter, Phone 857-204-1842, Email: amy.winter@state.ma.us**

Project Description:

Pristine Engineers, Inc. providing Shattuck Hospital Campus Planning MEP & FP Engineering Feasibility Study Services along with ICON Architecture under the Mass

State Project DPH1907 HS1. The Shattuck Hospital is a secure correctional treatment facility for women and men's recover from substance addiction.

Project Relevance:

This project is a DCAMM funded Department of Public Health owned secured facility in Boston, MA. This is a secured facility for providing treatment to the Women and Men's recovery from the addiction program.



Dr. Harry C. Solomon Mental Health Center - Department of Mental Health

Location: **Lowell, MA**

Date Completed:

Key Members: **Golam Mustafa PE, LEED AP, MCPPO Certified.**

Construction Cost: **\$10,000,000 (est.)**

Client Contact Info: **Amy Winter, Phone 857-204-1842; email: amy.winter@state.ma.us mviveiros@dbvw.com**

Project Description:

Pristine Engineers, Inc. provided MEP & FP Systems Engineering Feasibility Study for the renovations of Dr. Harry C. Solomon Mental Health Center – Department of Mental Health – Drug Abuse rehabilitation Correctional Medical Treatment Facility in Lowell, MA.

Project Relevance:

This Project is DCAMM funded Dr. Harry C. Solomon Health Center- Department of Mental Health Treatment and Correctional Facility. The facility is in Lowell, Massachusetts.



4b. Sub Consultant Experience

Jensen Hughes

Services Provided: MA Building Code Consultant

Project Name: **Massachusetts Department of Youth Services**

Location: **Taunton, MA**

Date Completed: **2020**

Key Members: **Mr. Todd Pearson**

Construction Cost: **\$Unknown**

Client Contact Info:

Architectural Engineers, Inc.

Nick Ferzacca, 617-542-0810,

Project Description:

Provided fire protection, life safety, and accessibility code consulting services for the proposed immediate air conditioning project at the Department of Youth Services (DYS) Goss Building in Taunton, MA. The Building consists of classrooms, faculty and administrative offices, observation rooms, teaching clinics, and sleeping units. The project provided air conditioning to the sleeping units, utilizing permanent mechanical duct work connected to rental air conditioning units located at the exterior of the building.

Project Relevance:

Example of code consulting services for a judicial facility.



Project Name: **Wareham District Court**

Location: **Wareham, MA**

Date Completed: **2020**

Key Members: **Mr. Todd Pearson**

Construction Cost: **N/A**

Client Contact Info:

Kleinfelder; Audrey Stuart

(617) 497-7800;

astuart@kleinfelder.com

Project Description:

Provided Building Code Consulting services, which included a comprehensive, detailed building evaluation, code review for Chapter 34 780 CMR, recommendations on systems upgrades for Fire Life Safety evaluations, including egress and structural recommendations as well.

Project Relevance:

Example of code consulting services provided for a judicial facility.



Project Name: **Essex County House of**

Location: **Corrections**

Middleton, MA

Date Completed:

In Progress

Key Members:

Mr. Todd Pearson

Construction Cost:

N/A

Client Contact Info:

HDR, Inc.; Harold Levkowicz

(617) 357-7790

Harold.levkowicz@hdrinc.com

Project Description:

Providing fire protection and life safety code consulting services for the Essex County House of Corrections Vocational / Inmate Housing Building. The existing two-story building is approximately 33,800 gross square feet. Each of the two levels of the Building contain inmate holding / sleeping areas, inmate restrooms and showers, employee offices and building support spaces. A review use study was requested for the current occupancy of

Project Relevance:

Example of code consulting services provided for a correctional facility.



JENSEN HUGHES

Commonwealth of Massachusetts
DSB Application Form

4b. Sub Consultant Experience

Jensen Hughes

Services Provided: MA Building Code Consultant

Project Name: **DCAMM Correctional Center for Women**

Location: **Various, MA**

Date Completed: **In Progress**

Key Members: **Mr. Todd Pearson**

Construction Cost: **Study \$550,000**

Client Contact Info:

HDR, Inc.; Harold Levkowitz

(617) 357-7790

Harold.levkowitz@hdrinc.com

Project Description:

Providing fire protection and life safety code consulting services for the study, design and construction administration of the future DOC's Correctional Center for Women. The goal of the study is to determine a consensus solution for either the replacement or renovation of existing correctional centers for women, which will be informed by the recommendations of the strategic planning effort.

Project Relevance:

Example of code consulting services provided for a correctional facility.

Project Name: **DCAMM John W. McCormack Building**

Location: **Boston, MA**

Date Completed: **2021**

Key Members: **Mr. Ted Dow**

Construction Cost: **NA**

Client Contact Info:

saam Architecture, Diana Nicklaus

617-275-4453

diana@saam-arch.com

Project Description:

Provided fire/life safety and accessibility code consulting services. The project included renovations of several portions of the building to facilitate a "restacking" of spaces within the McCormack building. Floors targeted for renovation in the McCormack Building include the Plaza level, Floor 3, Floor 11, Floor 13, and Floor 14.

Project Relevance:

Example of fire protection and life safety consulting services provided to a DCAMM



4b. Sub Consultant Experience

Nitsch Engineering, Inc.

Civil Engineering

Middleton Jail, Inmate Services

Building Replacement

Location: **Middleton, MA**

Date Completed: **Ongoing**

Project Team: **PM: William Maher, PE, LSIT; PIC: Gary Pease, PE, LEED AP**

Construction Cost: **Unknown**

Client Contact:

Harold Levkowicz, AIA, NCARB, CSI, LEED AP, HDR Inc., (617) 357-7700, harold.levkowicz@hdrinc.com

Project Description:

Providing civil engineering services for the Inmate Services Building. Reviewed record documents and conducting interviews with facilities personnel staff for preparation of an existing conditions utilities report. Preparing conceptual design drawings of the site layout, grading, and site utility improvements. Preparing a Conceptual Site Engineering Narrative of Nitsch's site utility improvement recommendations and will update to

Project Relevance:

- Provided civil engineering services
- Correctional facility project experience
- Experience working with DCAMM



Chelsea Soldiers' Home

Location: **Chelsea, MA**

Date Completed: **Ongoing**

Project Team: **PM: William Maher, PE, LSIT; PIC: Gary Pease, PE, LEED AP**

Construction Cost: **Unknown**

Client Contact:

Jennifer Hegarty, Payette Associates, Inc., (617) 895-1000, jhegarty@payette.com

Project Description:

Providing civil engineering services for Fire Alarm, Life Safety & Emergency Generator Upgrades. Also responsible for the utility design, construction administration, and permitting with the Chelsea Department of Public Works.

Project Relevance:

- Provided civil engineering services
- Experience working with DCAMM



Worcester County Jail and House of Correction

Location: **West Boylston, MA**

Date Completed: **2019**

Project Team: **PM: Chelsea Christenson, PE, PIC: Gary F. Pease, PE,**

Construction Cost: **\$20,000,000**

Client Contact:

Kristine Gorman (formerly of STV, Inc.) Jacobs, (617) 242-9222, Kristine.Gorman@jacobs.com

Project Description:

Provided civil engineering services for the combined intake, medical, and regional lock-up at the Worcester County Jail and House of Correction. Observed current site surface conditions in order to identify constraints and issues related to site topography, site utilities, and site layout. Reviewed local bylaws and attended meetings with Town of West Boylston staff to determine permitting requirements. Reviewed State/Federal regulations pertaining to site permitting requirements.

Project Relevance:

- Provided civil engineering services
- Correctional facility project experience
- Experience working with DCAMM



4b. Sub Consultant Experience

Nitsch Engineering, Inc.

Civil Engineering

Department of Mental Health, Worcester Recovery Mental Hospital

Location: **Worcester, MA**

Date Completed: **2012**

Project Team: **PM: Sandra Brock, PE**

PIC: Lisa A. Brothers, PE

Construction Cost: **\$302,000,000**

Client Contact:

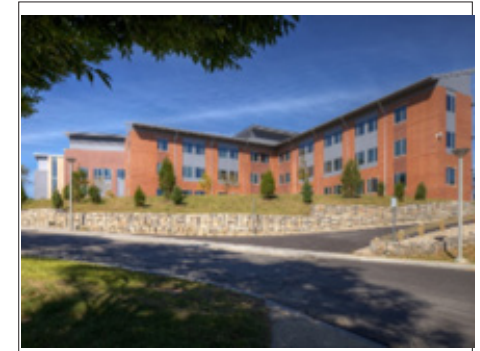
Peter Pogorski, AIA, Ellenzweig, 617-491-5575, pogorski@ellensweig.com

Project Description:

Provided civil engineering for 400,000 gross-square-foot psychiatric hospital that earned LEED Gold Certification. Worked with team during study phase; provided utility design, layout, and grading for the building and site; and designed stormwater system, including water re-use strategies and surface drainage features. The project was built under DCAMM's Construction Management at Risk model.

Project Relevance:

- Provided civil engineering services
- Experience working with DCAMM
- Experience working with DMH
- Construction Management at Risk model
- LEED Gold Certification



Wall Experiment Station

Location: **Lawrence, MA**

Date Completed: **2010**

Project Team: **PM: William R. Maher, PE, LSIT; PIC: Lisa A. Brothers, PE, ENV SP, LEED AP BD+C**

Construction Cost: **\$22,000,000**

Client Contact:

Leslie Sims (formerly of Perkins & Will), AIA, LEED AP BC+D, NBBJ, (617) 378-4800, lsims@nbbj.com

Project Description:

Provided civil engineering services for the expansion and renovation of the historic Senator William X. Wall Experiment Station. Designed improvements to the parking lot and the site utilities, including a new stormwater system that incorporates BMP design requirements. Also permitted the project with the City of Lawrence Conservation Commission. The project earned LEED Platinum certification.

Project Relevance:

- Provided civil engineering services
- Experience working with DCAMM
- LEED Platinum Certification



4b. Sub Consultant Experience

Mabbett & Associates, Inc. SDVOBE		Services Provided: Hazardous Materials Consultant
<p>Project Name: DCAMM, Worcester County Jail & House of Corrections: Removal & Abatement of Former Buried Hot Water Pipes</p> <p>Location: Worcester, MA</p> <p>Date Completed: 2017</p> <p>Project Team: Kevin Donovan</p> <p>Construction Cost:</p> <p>Client Contact: John O'Donnell, 857.204.1207, john.m.odonnell@massmail.state.ma.us</p>	<p>Project Description</p> <p>Abatement project monitoring services, including HAZMAT abatement design.</p>	<p>Relevance</p> <ul style="list-style-type: none">• Experience as a DCAMM contractor• Abatement project monitoring• Massachusetts certified asbestos project monitor and inspector• Correctional facility experience
<p>Project Name: DCAMM Bristol County Jail, Re-Roofing Asbestos Sampling</p> <p>Location: North Dartmouth, MA</p> <p>Date Completed: 2018</p> <p>Project Team: Michael Delaney</p> <p>Construction Cost: NA</p> <p>Client Contact: Stephen Garvey, SMRT, 207.321.3974, SGarvey@smrtinc.com</p>	<p>Project Description</p> <p>Collected bulk samples of suspect ACM in areas expected to be impacted by the proposed re-roofing.</p>	<p>Relevance</p> <ul style="list-style-type: none">• 79,060 ft² of roofing• Asbestos sampling• Prepared plans and design specifications for water damaged materials• Prepared abatement specifications for asbestos abatement and safe lead work practices• Massachusetts certified asbestos inspector• Correctional facility experience• Collaboration with SMRT
<p>Project Name: DCAMM, DPH Tewksbury State Hospital, Saunders Roof Replacement Study</p> <p>Location: Tewksbury, MA</p> <p>Date Completed: 2020</p> <p>Project Team: Kevin Donovan</p> <p>Construction Cost: NA</p> <p>Client Contact: William Pevear, 617.335.5186, bill@wwp3.com</p>	<p>Project Description</p> <p>Survey for regulated building materials as part of a roof study of the Saunders Building.</p>	<p>Relevance</p> <ul style="list-style-type: none">• Reviewed previous roof study and testing reports• Asbestos survey• Visual lead assessment of roofing materials• Massachusetts certified asbestos inspector

4b. Sub Consultant Experience

Mabbett & Associates, Inc. | SDVOBE

Services Provided: Hazardous Materials Consultant

Project Name: **US Department of Veterans Affairs, VISN 1 A/E ID/IQ Contract, Regulated Building Materials Services**

Location: **Northampton, MA**

Date Completed: **2016**

Project Team: **Kevin Donovan**

Construction Cost: NA

Client Contact: **Josee Goldin, 413.584.4040, Josee.Goldin@va.gov**

Project Description

Asbestos abatement design to support the planned renovation of 21,000 ft². ACM survey. Developed abatement plans, drawings, and specifications. CIH services and abatement monitoring.

Relevance

- Asbestos survey and abatement monitoring for planned renovation
- Massachusetts certified asbestos project monitor and inspector

Project Name: **VA Office of Asset Enterprise Management, Due Diligence Support Related to Environmental Conditions for Vacant Buildings, Zone 4**

Location: **MA, NH, CT, ME, NY, NJ, PA**

Date Completed: **2019**

Project Team: **Kevin Donovan**

Construction Cost: NA

Client Contact: **Brett Simms, 202.632.7092, Brett.Simms@va.gov**

Project Description

Environmental due diligence services at 17 VAMCs in Zone 4 including concurrent Phase I ESAs, regulated building surveys, McKinney-Vento surveys, and cultural resource services compliant to Section 106 of NHPA.

Relevance

- Regulated building materials survey, including estimating quantities of asbestos, lead paint and other materials
- Massachusetts certified asbestos project monitor and inspector

4b. Sub Consultant Experience

Ellana, Inc. | WBE/DBE

Cost Estimating

DCAMM Middleton Jail - Façade and HVAC Project

Location: **Middleton, MA**

Date Completed: **2020**

Project Team: **Clive Tysoe**

Construction Cost: **\$2,900,000**

Client Contact:

Simone Brogini

617.750.2233

SBrogini@kleinfelder.com

Project Description:

This project involves providing cost estimating services for façade and HVAC upgrades at the 80-bed unit and vocational building of the Middleton Jail. Our team provided cost estimating at the Schematic Design and 60% design phases.

Project Relevance:

Cost Estimating



Boston City Hall Renovation

Location: **Boston, MA**

Date Completed: **2021**

Project Team: **Clive Tysoe**

Construction Cost: **\$67,300,000**

Client Contact:

S. Fiske Crowell, Sasaki Associates

(617) 923-7130

fcrowell@sasaki.com

Project Description:

This high-profile and highly visible project for The City of Boston posed many complications for the design team. The particular complications were associated with existing subsurface conditions, which include 3 subway tunnels, underground parking garages, a vague utilities layout. There were also complications presented by neighboring building owners. The overall goal was to provide a design that facilitates true civic engagement.

Project Relevance:

Cost Estimating



Monroe County Courthouse

Expansion Location: **Stroudsburg, PA**

Date Completed: **2019**

Project Team: **Clive Tysoe**

Construction Cost: **\$63,000,000**

Client Contact:

Brad Sassatelli, CGL Companies

Vice President

916.678.7890

Project Description:

Ellana provided cost estimates for the concept studies during the initial design development which included space programs, building systems and site development. The estimate also tested the budgeted construction cost established by the members of MCC moving forward. The project is broken down into 3 separate phases consisting of the Existing Courthouse Renovation, Existing Annex Renovation and New Addition.

Project Relevance:

Cost Estimating



4b. Sub Consultant Experience

Ellana, Inc. | WBE/DBE

Cost Estimating

Massport Security Badge Office

Reno

Location: **Boston, MA**

Date Completed: **2020**

Project Team: **Clive Tysoe**

Construction Cost: **\$600,000**

Client Contact:

Simone Brogini

617.750.2233

SBrogini@kleinfelder.com

Project Description:

For this project our team produced a cost estimate at the CD phase of design. This 1,336 SF renovation included mostly architectural alterations that improved the program of the space. Finishes included new ticketing countertops and MEP upgrades. A portion of the work included interior and exterior partition demolition with subsequent infill work.

Project Relevance:

Cost Estimating

Third Street Court

Location: **Cambridge, MA**

Date Completed: **2020**

Project Team: **Clive Tysoe**

Construction Cost: **\$5,000,000**

Client Contact:

Alan Fried

617.357.7760

Alan.fried@hdrinc.com

Project Description:

Our team joined HDR for the study and SD design phases for this project to renovate the Third Street Court in Cambridge. The project work included the renovation and restoration of the detention area, the MEP, windows, the masonry, the skylight, and the cupola. The work will help the city restore and preserve this historic building.

Project Relevance:

Cost Estimating



DYS Taunton - Southeast Regional Youth Service Center, DSB #22-20, Project #DYS2201

Introduction

Selection of the SMRT team as your consultant will help the state achieve the expressed goals for the study and design of a DYS Taunton Southeast Regional Youth Center because of the team's:

- **Extensive Juvenile Facility planning and trauma-informed design experience** focusing on rehabilitation, education and growth in hardware-secure institutions designed especially for juveniles.
- Long term experience designing **normative environments that are safe**, secure, maintainable, and durable.
- **Thoughtful approach to user engagement** inclusive of facility residents, staff, officers, and community members. SMRT & PB/A's experience is complemented by WOLA's Landscape Architecture Practice specializing in stakeholder and user engagement.
- Experience with designing **indoor and outdoor spaces that contribute to health, well-being and rehabilitation** of the occupants in correctional, healthcare and hybrid environments.
- Full-service architectural and engineering practice supports every project bringing informed insight to ensure your facilities **function dependably and efficiently** while maintaining the safety of residents and staff.
- Understanding of the importance that DCAMM places on providing **meaningful opportunities for MBE/WBE firms**. We have chosen partner firms that are well qualified to assist SMRT with this project and exceed those requirements.
- **Holistic approach to sustainable, resilient and healthy building design** to positively affect the health and well-being of all building occupants and their ever-changing needs.
- **Commitment to sustainable design** throughout all of our practice – SMRT a leader amongst the growing movement to quantify the Embodied Carbon of our work with three substantial CLT framed projects currently under construction. Our commitment to sustainability is built on a long history of LEED accredited and Net-Zero projects.

- Long term commitment to our clients. In addition to our **deep resume of work with DCAMM** including recent work for DYS, we have guided many states on transforming their Juvenile facility needs.
- **SMRT is currently assisting multiple counties/regions in New York as well as the State system in Maine to bring their Juvenile facilities up to contemporary standards to support an education and rehabilitation focused model.**

Justice System Experts

SMRT's Justice team is nationally recognized for the innovative design of secure, functional and efficient facilities, including many types of juvenile facilities. We provide needs assessments, feasibility studies, programming, and design services for new and renovated facilities of all sizes and security levels. Our Justice practice is complemented by a Health and Wellness practice and Education Studio. The cross pollination of our open studios enables us to apply learnings from our K-12 work and medical environments to projects like this that seek to balance security, education and wellness.

We bring our structured planning process to the table to foster critical staff involvement that gets to the real needs and issues informing design. We understand the need and benefit of involving the facility leadership, program and security staff and residents in the planning process.

Four of our justice projects have been recognized for design excellence by the American Institute of Architects' (AIA) Academy of Architecture on Justice, including The Long Creek Youth Development Center and the MDOC Women's Reentry Center, 2019 award.

Sub-Consultant Partners

- **Pulitzer/Bogard and Associates (PB/A) | Juvenile Corrections Planning.** PB/A has served more than 80 clients in 28 states successfully providing innovative, comprehensive solutions to criminal justice and forensic health care problems. PB/A provides a full range of facility planning operations consulting services for juvenile facilities, prisons, jails, community corrections, and mental health facilities. PB/A and SMRT have worked together successfully for over 30 years on hardware and staff-secure projects throughout the County.

5. Supplemental Response to Evaluation Criteria

- **WOLA | Landscape Architecture (WBE).** WOLA's work focuses on meaningful engagement with multiple perspectives of stakeholders, from childcare facilities serving working families in Central Massachusetts, to municipal planning departments. Their approach is thoughtful and collaborative: planning activities and outreach so that everyone who would like to participate is heard. The key to all of their content and site-specific engagement is at the core of WOLA's approach: listening to people who have perspectives to share.
- **Pristine Engineers, Inc. (PEi) (MBE/DBE) | Mechanical, Plumbing and Fire Protection.** Located just minutes from the project site, Pristine Engineers brings experience working in the Taunton Hospital as well as deep experience with DCAMM procurement and project policies and procures. ***SMRT and Pristine have been working together for over 5 years on multiple secure environments including projects locally for the Bristol County HOC.***
- **Ellana, Inc. (WBE/DBE Certified) | Cost Estimator.** Ellana is a construction consulting firm providing cost management services. Their approach to cost management involves safeguarding your interests at every stage of design, procurement and construction process by focusing our efforts on achieving the best project results.
- **Nitsch Engineering | Civil Engineering (WBE).** Since 1989, Nitsch has provided civil engineering, land surveying, transportation engineering, structural engineering, green infrastructure, planning, and GIS services. ***SMRT has teamed with Nitsch Engineering on the Lawrence Pre-Release Facility, the Massachusetts Correctional Institute's Shirley Food Service Building and the Mass DYS Boston site access project.***
- **Jensen Hughes | MA Building Code Consultant.** Jensen Hughes is a global leader in specialty engineering and consulting services for the built environment. ***SMRT has worked with Jensen Hughes recently on the NH Correctional Facility for Women, and the USM Student Residence Hall and Student Success Center (utilizing CLT framing and meeting Passive House requirements).***
- **Mabbett & Associates | HazMat/Air Quality Inspection (SDVOBE, SDVOSB).** For 37 years, Mabbett has provided integrated environmental, health and safety consulting, industrial hygiene and environmental compliance auditing to state and Federal agencies, municipalities, prime contractors, industry, and commercial institutions throughout Massachusetts. ***SMRT has worked with Mabbett on more than 10 projects over the past few years alone.***

Evaluation Criteria

1. Demonstrated expertise in designing trauma-informed spaces for youth that address educational, psychological and health needs.

SMRT's 20 year+ experience designing forward focused secure juvenile facilities includes stand out projects reflecting the evolution of contemporary thought around the programmatic, operational, environmental and therapeutic aspects of these complex facilities.

Early 2000's – SMRT (in collaboration with PB/A) completed the design of two separate Juvenile facilities for the State of Maine. The Long Creek and Mountain View facilities represented cutting edge facility design for their era, were **recognized by the AIA Academy of Justice and served as model facilities** for many states over the following 10 years. These facilities deconstructed the traditional correctional facility typology by layering in design and programming methodologies of K-12 schools and long term care healthcare models. The resulting housing areas utilized reduced scale built features, lots of natural light, bright colors and natural materials to create an environment in alignment with these complimentary facility models.



Long Creek Youth Dayroom

2010-2013 – SMRT and PB/A led the Commonwealth of Puerto Rico through a complete revisioning of their juvenile justice system. This holistic approach included a focus on providing equity to programs across the wide range of classifications and cultural backgrounds for both boys and girls. The facility is designed along an education model including a full program of support spaces including classrooms, library, healthcare, mental health services, etc. The campus style layout of this large facility was directly a result of the analysis of other environments the residents would be familiar with to create a sense of normalcy and comfort to enable productive learning and growth.

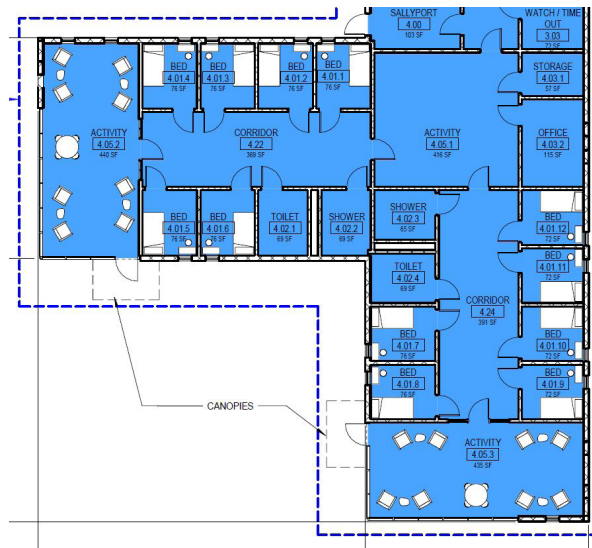


Puerto Rico Juvenile Dayroom

5. Supplemental Response to Evaluation Criteria

2018-2022 – SMRT has been working with four Counties in the Capital Region of New York to transform their existing regional facility to accommodate two new competing requirements. As the state of NY had recently raised the age of adulthood in their justice system, this existing juvenile facility was preparing to take on an increased cohort of older kids [‘Adolescents’ in their terms] which came with increased security requirements, all the while adapting to a more progressive, ‘softer’ program mandate. SMRT has been navigating the security-focused ‘Commission on Corrections’ and the programs-focused ‘Office of Child and Family Services’ to re-envision a secure yet educationally focused environment that is specially designed around the past traumas and cultural experiences of the residents.

New housing units are designed around a residential model with stepped scaler program spaces modeled after a traditional residential environment. Kids have their own bedrooms that open to “living room” areas shared by up to six residents with access to an activity space full of natural light that serves as a “front porch” leading to outdoor space. These small housing units then open to a shared activity “Great Room” that is shared by two six-resident units, one step away from the close ‘comfortable’ home environment to a slightly larger community scale. Housing groups continue to combine in layout and programming until they are connected directly to the school portion of the facility, which directly reflects regional school models and is run by the local school department.



Capital Region of NY Concept Floor Plan

SMRT’s experience is bolstered by PB/A’s national experience guiding states from Maine to Tennessee to Texas as they navigate the ever-evolving requirements and expectations of their constituent communities. The PB/A team has planned and designed a number of trauma-informed facilities that house juveniles involved with the justice system. Two recent examples of trauma-informed design include the Harris County Juvenile Detention Center in Texas and the Williamson County Juvenile Justice Center in Tennessee. One of the key components is to incorporate behavioral modification and coping skills development into the everyday lives of the juveniles. Cross-training direct supervision staff to incorporate therapeutic techniques as part of housing unit management and an integrated treatment team are both very effective.



Williamson County Juvenile Justice Center and Alternative Learning Center site plan

Other techniques include rewarding juveniles for good behavior rather than solely relying on punishment; providing staff with a variety of incentive tools to encourage good behavior; providing juveniles with choices so that they have some control over their lives; allowing juveniles to personalize their rooms (e.g., painting a juvenile’s room with chalkboard paint and providing chalk, providing blankets in several colors and allowing the juveniles a color choice, etc.); staff demonstrating and rewarding respectful behavior, and many others. Having on-site, and preferably in-housing unit mental health personnel is important, as well as having well-designed spaces for medical, therapy, and social work personnel. Designing safe, anti-ligature, suicide-resistant spaces is important, as is vigilant staff supervision.

Curtiss Pulitzer (PB/A), who will lead the programming phase, has been the Federal Court Monitor for the Juvenile Justice System in Puerto Rico for over a decade. One of his key tasks was to advise and oversee the implementation of a ligature-free environment in several of the Commonwealth’s juvenile facilities, as suicidal ideations are much higher for juveniles who are in custody.

As SMRT’s Justice practice values close collaboration with our other internal practice areas of educational and healing environments, SMRT and PB/A’s justice facility

5. Supplemental Response to Evaluation Criteria

experience is complemented by our landscape architect partner WOLA. WOLA has undertaken work on environments which serve the needs of multiple publics in many instances. Whether designing a play space for under-served working families in Central Massachusetts or undertaking efforts to provide ADA access on educational campuses, WOLA's work is dedicated to providing beneficial outdoor spaces and access to all. Their work knits together context, program, and environmental factors to meet the needs of all users.

2. Demonstrated expertise in designing new buildings in historically significant campuses and experience with Chapter 149A projects. Ability to innovate while being responsive to existing context.

SMRT's design approach is one based in service to our client's vision, not our own. We approach every project with an open mind and open ears, striving to understand our client's needs while understanding where our expertise and experience can guide that vision rather than determine it. This approach lends itself well to projects within an existing campus or significant historic context. There is no 'one size fits all' approach to architectural articulation at SMRT. We will follow the National Register of Historic Places guidelines in providing complimentary architectural expression representative of our time that fits in context with the Taunton State Hospital Campus.

This approach is complemented by WOLA's approach to the exterior/ landscape components. This type of campus work draws on WOLA's expertise in understanding the social and physical context of the proposed structures. As part of a DCAMM House Doctor contract, WOLA recently produced a study for the Massachusetts College of Liberal Arts, as they consider removing a building in the center of their campus. The center of MCLA is currently inaccessible: WOLA presented several concepts which re-envision the campus center, creating an accessible circulation system which connects all buildings around this core while supporting the existing context and proposed program.

As leaders in alternative construction delivery methods, SMRT is especially qualified to lead the Department of Youth Services through the 'Construction Manager at Risk' [CMaR] delivery method. Our Experience spans all types of delivery methods; CMaR, CMa, DB, P3 and IPD. The majority of our projects are delivered through the CM delivery method, with notable relevant work ongoing at the Maine Correctional Center, Capital District Juvenile Facility in Albany, NY and many healthcare, high-tech manufacturing, and government projects across the country.

3. Proven track record of integrating architecture and landscape design to... Facilitate healing without compromising on safety and security needs:

Healing, learning, growing and even productively listening cannot happen in an environment that causes anxiety, brings up traumatic memories or simply distracts. Materiality, control, acoustics, scale and light level all play critical roles in this balance. All of SMRT's secure environments are designed around these core critical attributes without compromising the safety and security of the users, staff or community.



Maine Correctional Center Women's Re-Entry



NH Correctional Women's Facility



Greene County Jail - New York

As designers of correctional facilities with the intention of providing a rehabilitative environment meant to reduce recidivism across the population, SMRT is proudest when we hear the facilities we have designed are seeing reductions in population. SMRT has

5. Supplemental Response to Evaluation Criteria

designed both the Hardware-Secure and Staff-Secure (Re-entry) Women's correctional facilities in Maine. **In 2020 we were thrilled to learn that a little over 10 years after the secure facility came online and three years after the Reentry Center, over 70% of the female population had moved out of the secure facility.** This is credited 100% to the progressive programming and administration of the MDOC and their community partners but we take pride in creating the environments that aligned with and supported their ambitious mission.

Preserve and complement the historic milieu:

As a 130+ year old Portland, Maine based firm, SMRT has significant experience balancing contemporary project requirements within an historic context. Our architectural approach to complimenting the historic context of the Taunton Campus will be led by Bob March who has spent over 20 years specializing in historic campus and facility needs for clients like the National Park Service. Our approach to this project, like all of our work, will be all about balance; in this respect balancing the historic context and the contemporary vision.

Our design team proposes to approach this project as a campus project, providing safe, humanely proportioned spaces for young people and DYS staff. In the context of the larger DMH facility this project also represents an opportunity to improve the visual environment of those who are housed in the surrounding buildings, expanding the impact of the project beyond its physical boundaries. Landscape design will be critical in the siting of this new facility, ensuring that the existing historic context is respected, and that the new facility is integrated into the fabric.

WOLA recently completed several projects at Amherst College, integrating accessible walkways into the fabric of the campus and providing ADA connections to historic and modern buildings. These new connections were designed with careful grading and attention to detail, ensuring that, at the end of the project, it felt as though the additions had been part of the original Olmsted plan for the campus. The young people at the DYS facility, and those in the surrounding buildings, deserve design excellence in their campus as well.

Further sustainability and campus resiliency goals

As further described later in response to factor 5 below, SMRT is driven by a solid complement to sustainable and resiliency goals. As an AIA 2030 and an SE 2050

signatory, SMRT has pledged our efforts to support in reducing the impact of our built environment onboard operational and embodied carbon. We will work with all stakeholders on this project to determine the right options to this end. SMRT utilizes Cove Tool, Tally, Autodesk Insight and many other platforms on all of our projects to show empirically what type of impact even the slightest material choices can have on our environmental impact.

Outside of the building envelope, WOLA has completed work for a number of clients which incorporates forward-thinking stormwater design, including infiltration systems and bioswales, as well as native plantings which provide habitat for insects and birds. With alternatives to lawn like low-grow meadow plantings, our design approach will provide the security which justice facilities require, reduce maintenance in terms of mowing, and provide additional stormwater and wildlife habitat benefits.

4. Diversity Focus Statement.

SMRT is guided by the enduring belief that "together we are stronger." Our commitment to respect all voices and bring together diverse perspectives sets the stage for an equitable workplace. We embrace diversity because it is the moral and ethical right thing to do; diversity also makes us individually and collectively better able to successfully serve our clients and business partners. SMRT has long been a place where all employees are given opportunities to grow and pursue career advancement no matter their gender, education, race, sexual orientation, religion, politics, or other defining characteristics.

In a male-dominated industry, SMRT leads the way in promoting women to leadership positions. Our CEO and COO are women, as are most of our directors and many of our discipline leaders. Our principals are accessible, approachable, and committed to mentoring and developing talent within the firm. We do not tolerate a "winners and losers" culture, but rather seek to problem solve and balance the wants and needs of different stakeholders, understanding that positive change comes from removing barriers and creating opportunity for all.

We also bring our commitment to equity, diversity, and inclusion (EDI) outside the firm. SMRT provides paid time for our employees to volunteer in the communities where we live and work. We are committed to helping vulnerable populations through direct, hands-on work as well as designing environments where these populations have safe and secure places to live, learn, heal, work, and grow. We are on a path to explore how to further open the pipeline in our industry to a more diverse workforce, understanding

5. Supplemental Response to Evaluation Criteria

that this starts with access to all, education, mentoring and creating meaningful opportunities.

Our EDI committee recently presented an internal 'Lunch and Learn' on the history of the LGBTQ+ community and its relation and impact to the A&E professions. The presentation was such a success that our EDI committee has recently presented it to one of our partner firms and we have an open offer to our peer firms to do the same. At the core of SMRT's EDI commitment is accepting that we can always do better and that it is our responsibility and duty to improve humankind through our coordinated actions.

We understand the importance that DCAMM places on providing **meaningful opportunities for MBE, WBE, SDVOBE, VBE, DOBE and LGBTQ+** firms. We have thoughtfully chosen partner firms that are well-qualified to assist SMRT service this contract and meet those requirements. We anticipate a total of **30%** participation from our MBE, WBE and SDVOSB partners, broken down as follows:

- Pristine Engineers | Mechanical Engineers (MBE) – **16%**
- Nitsch Engineering | Civil Engineering (WBE) – **6%**
- WOLA | Landscape Architecture (WBE) – **3%**
- Mabbett & Associates | HazMat/Air Quality Inspection (SDVOBE, SDVOSB) – **3%**
- Ellana, Inc |Cost Estimators (WBE/DBE) – **2%**

30%
MBE, WBE, SDVOSB
Participation

These set-aside firms will report directly to SMRT's project manager, Mark Rogers, and provide 100% of the services in which they are specialized.

5. Demonstrated experience in leading and facilitating projects with ambitious sustainable goals.

As a proactive signatory to the AIA 2030 commitment, everyone at SMRT is committed to performing a robust energy modeling process on all projects of this size. Whether it is a contractual requirement or not, it is part of our internal project delivery process. As mentioned previously, SMRT currently has two significant CLT framed buildings in Construction, one of them on track to be one of the five-largest Passive House certified housing projects in the nation.

As a full-service design firm that specializes in complex 24/7 facilities, our expertise in efficient building systems goes back well before sustainable design was in vogue.

Our correctional facilities have utilized high efficiency systems and geothermal wells to reduce utility load for over 20 years. We have designed many net-zero and LEED buildings including one of the only LEED Gold certified hospitals in the nation, Maine General Medical Center.

Graham Vickers, our Principal-In-Charge, was a founding member of SMRT's "Sustainability Council" which successfully signed onto the AIA 2030 commitment in its first year. Throughout his career, Graham has led the design of three residence halls and an academic building on the Unity College Campus in Unity Maine, all of which are designed to be Net-Zero in anticipation of strategic electrification of the local grid and on campus solar generation. All of these buildings were wood framed and over insulated to reduce embodied and operational carbon while supporting the local sustainable forestry industry. Graham has also led the design of \$20M in construction, over multiple buildings, on the Fort Buchanan Campus in Puerto Rico. These buildings were over-insulated concrete sandwich panel construction to accommodate the blast and hurricane requirements while reducing the cooling load to within the power generated by the included solar field, to be design-to net-zero energy standards. While the USACE did not pursue Net-Zero certification, the project was awarded LEED Gold accreditation.



Fort Buchanan Department of Public Works