



West Carrollton

KET



806 Acco



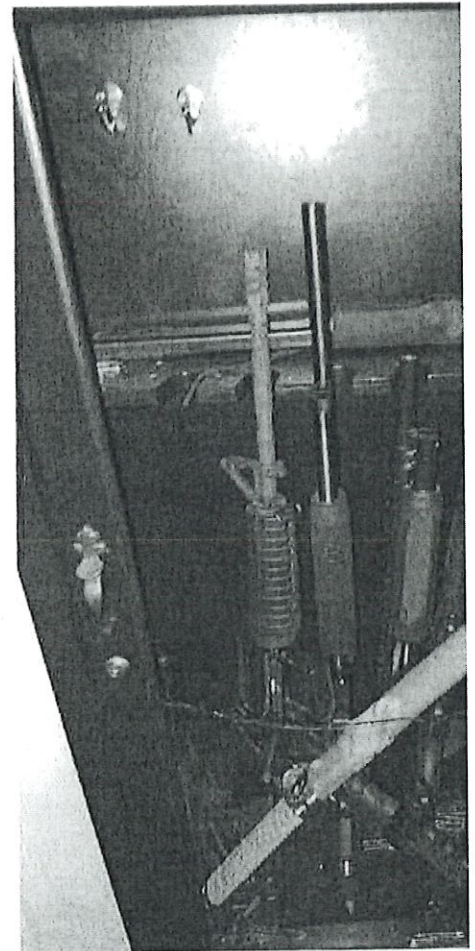
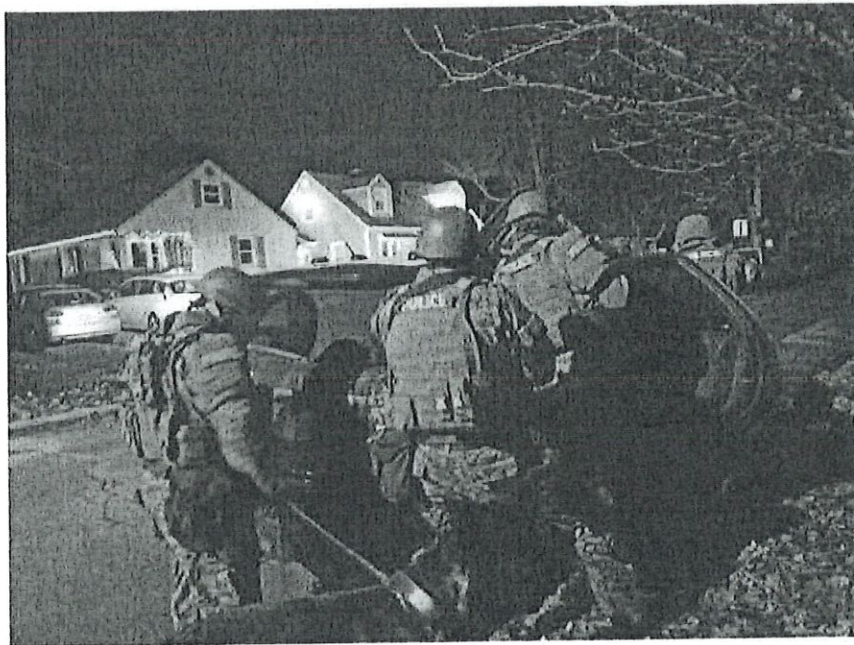
RERT Support

KET



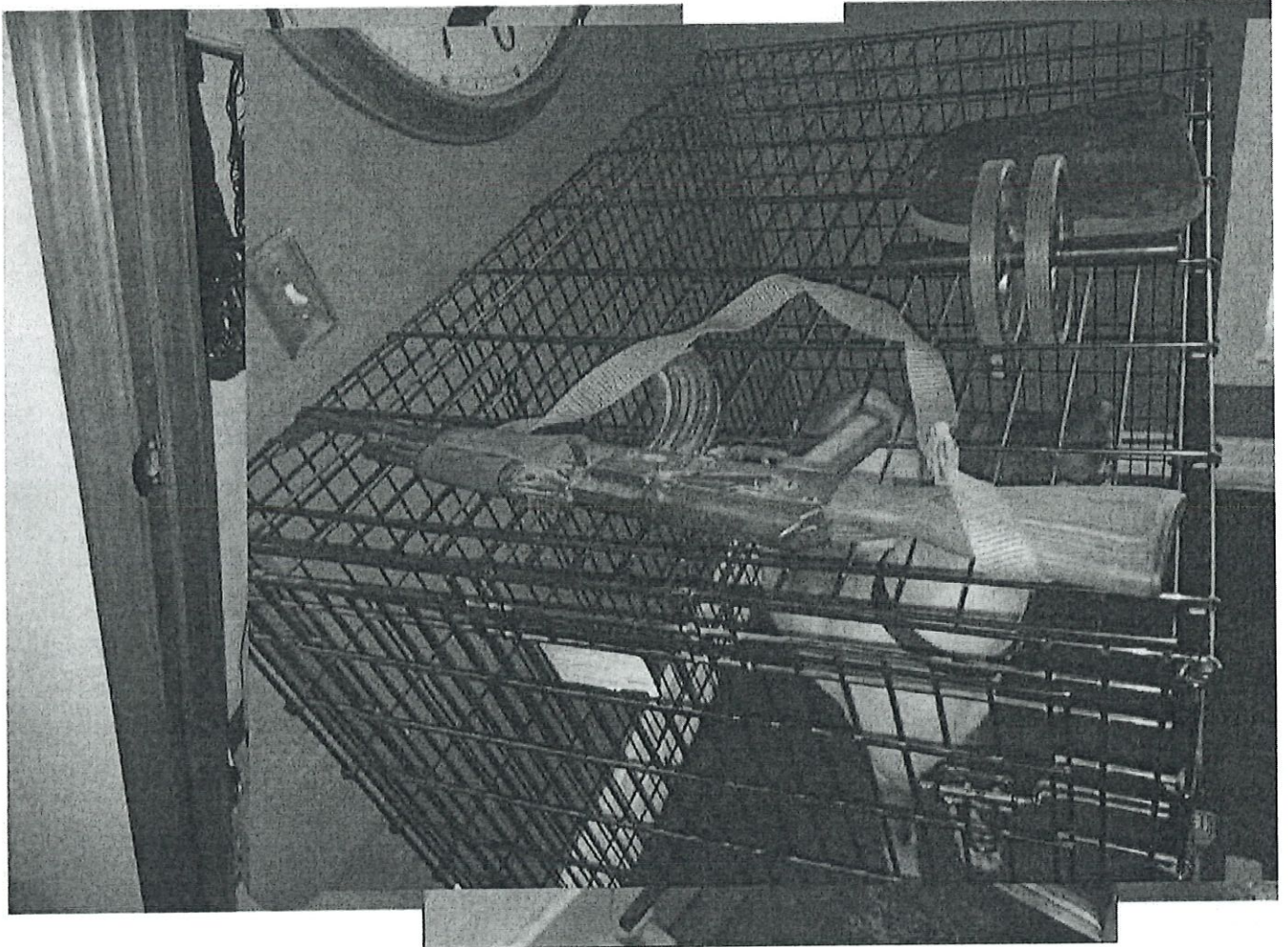


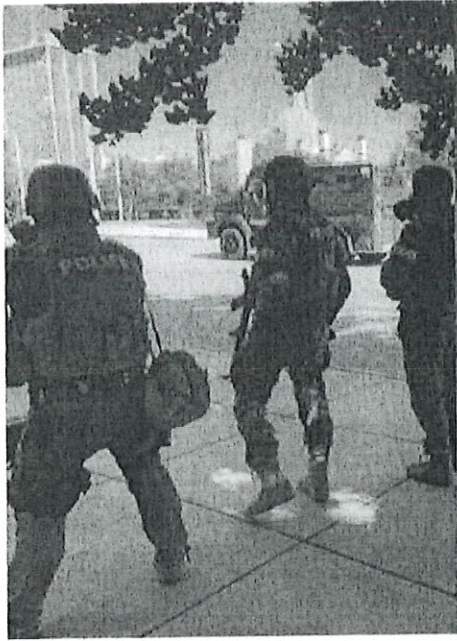
Kettering Barricade^{KET}





KET





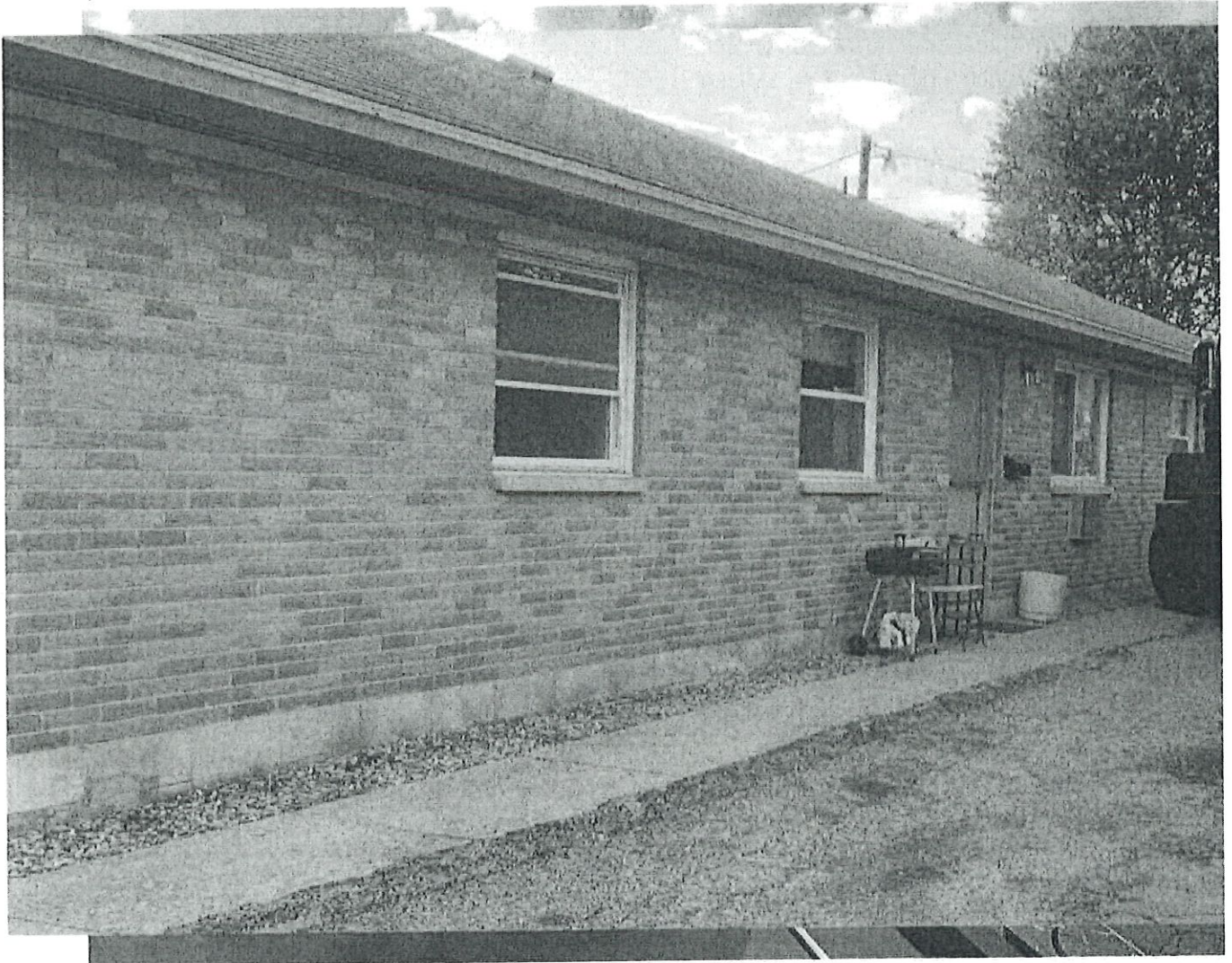
CS

KET





Rescue Capability ^{KET}





Orchard Hill

KET





Planned Parenthood^{KET}





Fulton Ave

KET





2812 Cadillac Dr

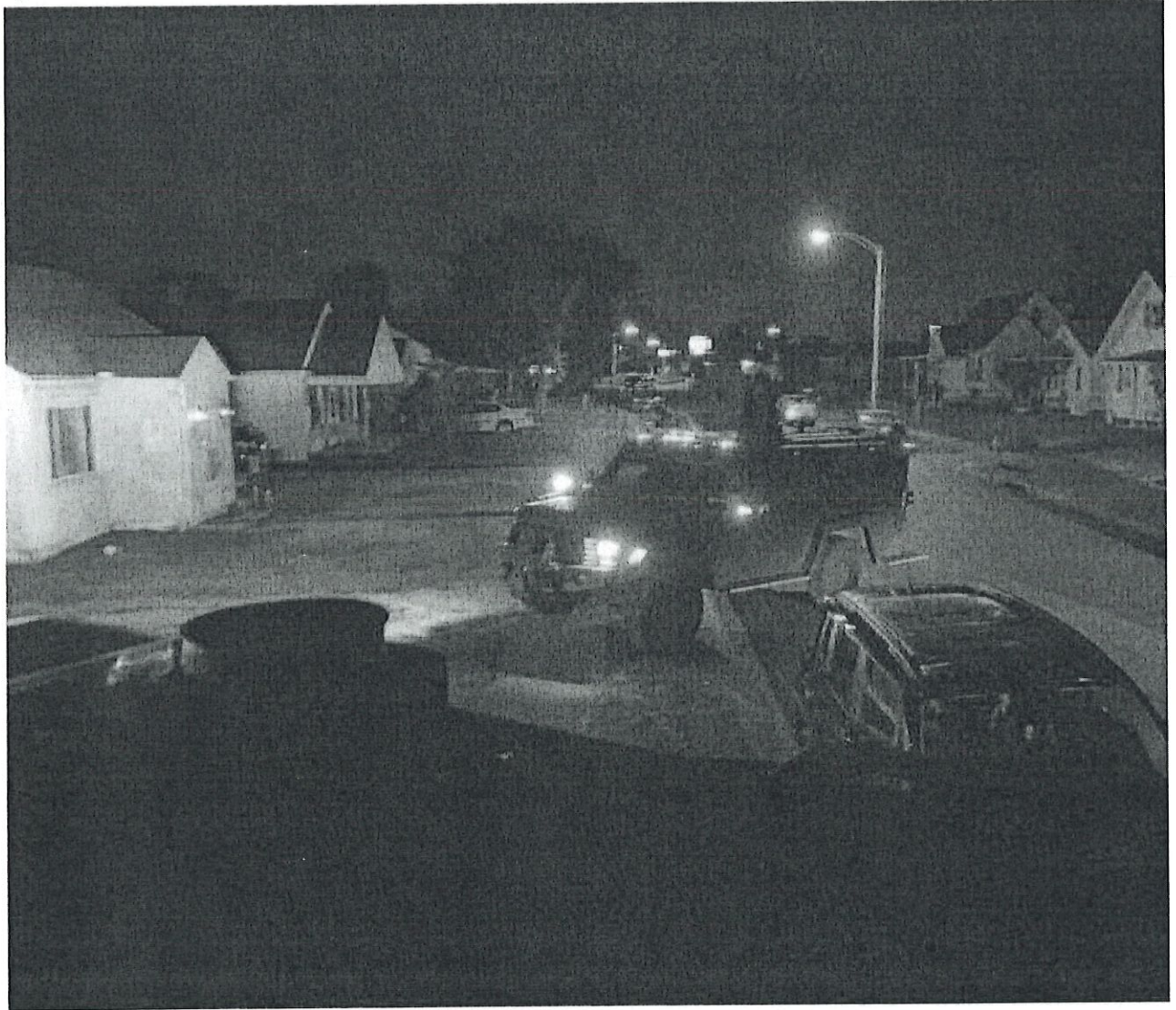
KET

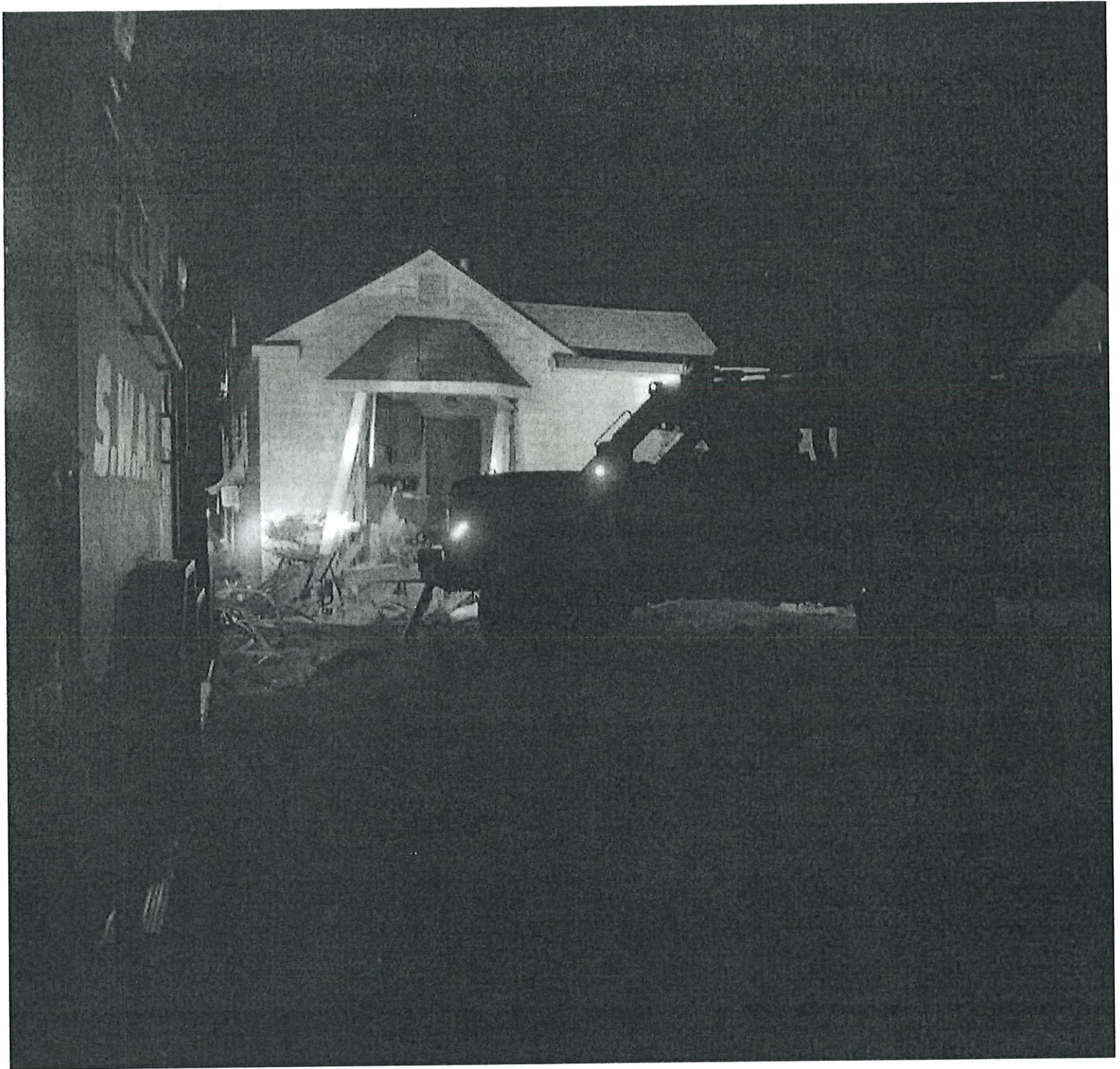




2812 Cadillac Dr

KET







NTOA/IACP Study ^{KET}

- Joint study on critical trends and issues re tactical teams throughout the United States
- “Agencies that activated their SWAT team indicated they were EIGHT TIMES more likely to use less-lethal solutions than lethal force”
- “The incident type that occurred most often was one in which a suspect was armed or firearms were found”
- The most commonly reported support unit used to resolve incidents was a TRV



Cost Comparisons^{KET}

- Fire Engine
 - Medic
 - Vacuum Truck
 - Dump Truck
 - Ladder Truck
 - Garbage Truck
- \$550,000
 - \$300,000
 - \$400,000
 - \$125,000
 - \$1.1 million
 - \$330,000



Cost of TRV

KET

Initial Cost

- Combined purchase
- \$286,000
- = \$36k per agency
- Service life > 20 years
- $\$36k \div 8 =$
\$1,800/year

Maintenance

- Built on F-35 chassis
- Ford engine
- Serviceable in city vehicle maintenance program



Closing Thoughts ^{KET}

- Rare 20 years ago to have subject armed with anything more than a pistol or shotgun
- Today, high caliber rifles are the norm
- Open air threats (protests) have increased exponentially
- Suspects more willing to resist police commands
- A TRV is the “in standard”, with having multiple
- Reliance on mu has shown to p unacceptable ri
- Operating with support dramat increases likelih lawsuits agains

