

PRAIRIE VIEW RANCH PUD
 THE EAST HALF OF SECTION 1, TOWNSHIP 1 NORTH, RANGE 60 WEST
 OF THE 6th PRINCIPAL MERIDIAN, MORGAN COUNTY, COLORADO

OWNERS:
 FRED GIBBS,
 1001 0th Street
 Greeley, CO
 80631
 JOHN D. PEARSON
 PO Box 696
 Buffalo, WY
 82834

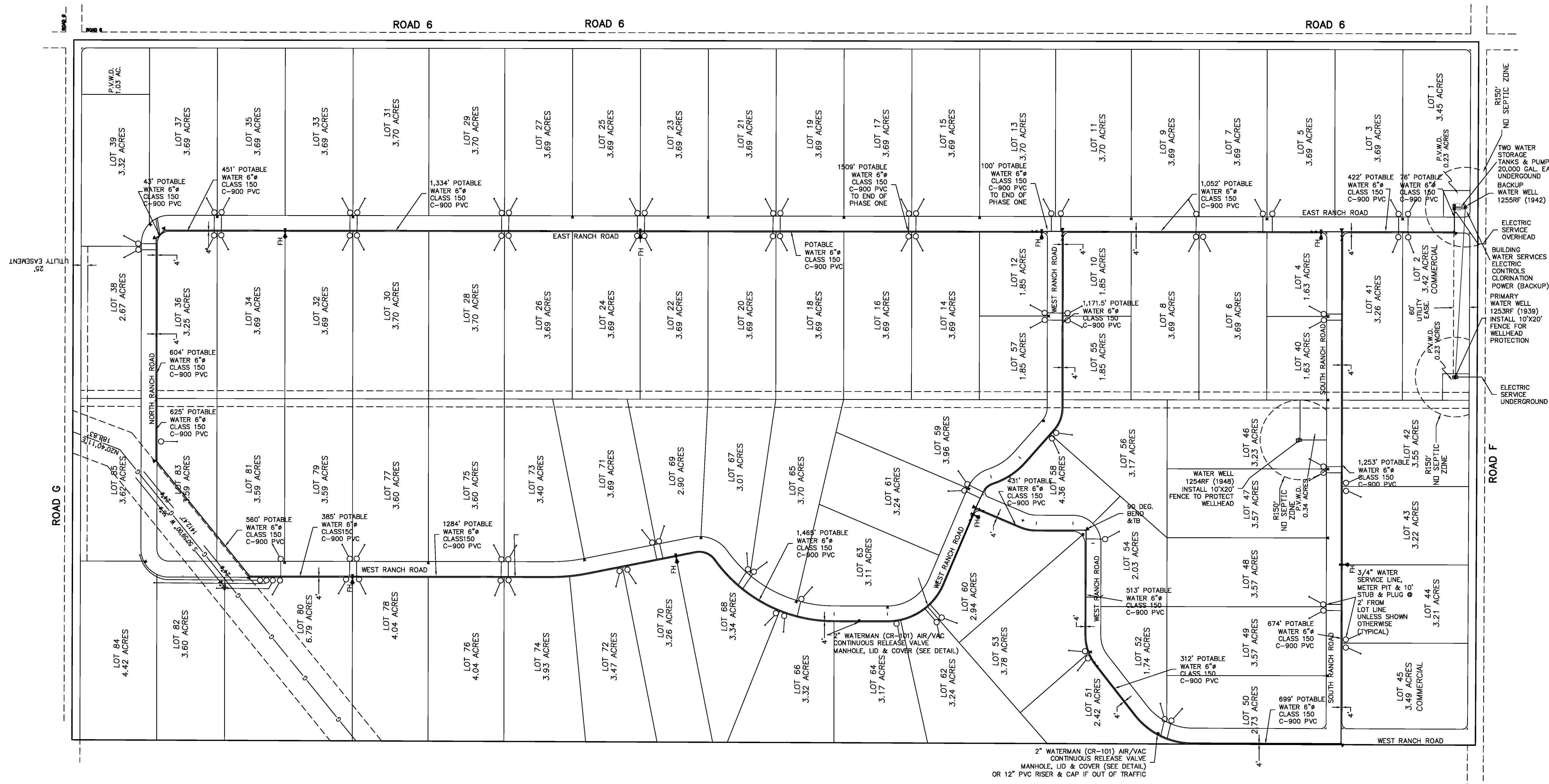
| REVISIONS | DESCRIPTION | DATE | BY |
|-----------|---|------|-----|
| 3/23/06 | REVISIONS PER CDPIE 4/21/04 REVIEW MEMO | | JGG |

GAUTHIER ENGINEERING, INC.
 2157 Buena Vista Drive
 Greeley, Colorado 80634
 Office (970) 330-0855 Cell (970) 302-0039

DESIGNED JGG
 DRAWN JGG
 CHECKED JGG

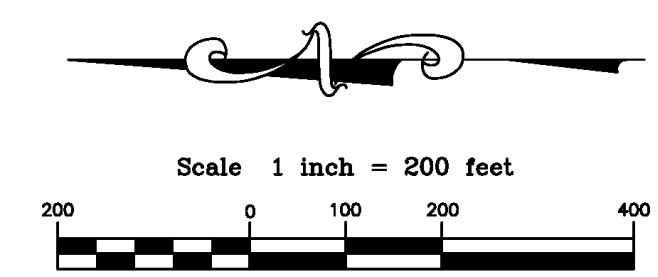
PRAIRIE VIEW RANCH WATER DISTRICT LLC
 WATER DISTRIBUTION SYSTEM LAYOUT

| | |
|-------------|--------------------------------|
| PROJECT NO. | G-01-03 |
| SCALE | HORIZ.: 1" = 200' VERT.: NA |
| DATE | 09-20-2019 |
| SHEETS | 12 |
| SHEET | 5 |



LEGEND

- | | | | |
|---|-------------------------|---|------------------------------|
| — | PIPING | ● | FIRE HYDRANT |
| — | UNDERGROUND ELECTRIC | ● | YARD HYDRANT |
| — | OVERHEAD ELECTRIC LINE | ● | VALVE |
| — | WATER SERVICE LINE | ● | CLEANOUT |
| — | INDEX CONTOUR | ● | THRUST BLOCK |
| — | INTERMEDIATE CONTOUR | ● | WATER METERS & SERVICE LINES |
| ● | MANHOLES | ● | FIBER OPTIC LINE |
| ● | COORDINATE LAYOUT POINT | ● | GAS LINE |
| — | CHAIN LINK FENCE LINE | | |



LEGEND

- | | | | |
|---|---------------------------|---|------------------------|
| — | CHAIN LINK FENCE | ▲ | CONTROL POINT |
| — | BARBED WIRE FENCE | ● | PROPERTY CORNER |
| — | INDEX CONTOUR | ○ | SANITARY SEWER MANHOLE |
| — | INTERMEDIATE CONTOUR | ○ | UTILITY POLE |
| — | DRAINAGE CENTERLINE | ○ | GUY WIRE ANCHOR |
| — | SANITARY SEWER LINE | ○ | DECIDUOUS TREE |
| — | WATER MAIN | ○ | CONIFEROUS TREE |
| — | WATER SERVICE LINE | ○ | CONCRETE FLATWORK |
| — | OVERHEAD ELECTRIC LINE | ○ | GRAVEL SURFACING |
| — | UNDERGROUND ELECTRIC LINE | | |

This Drawing is the property of Gauthier Engineering, Inc. and is not to be reproduced, modified or used for any other project or extension of this project except by express written consent of Gauthier Engineering, Inc. Liability shall not be taken or held responsible for any claim, liability or costs arising out of any reuse or modification of this drawing by others.