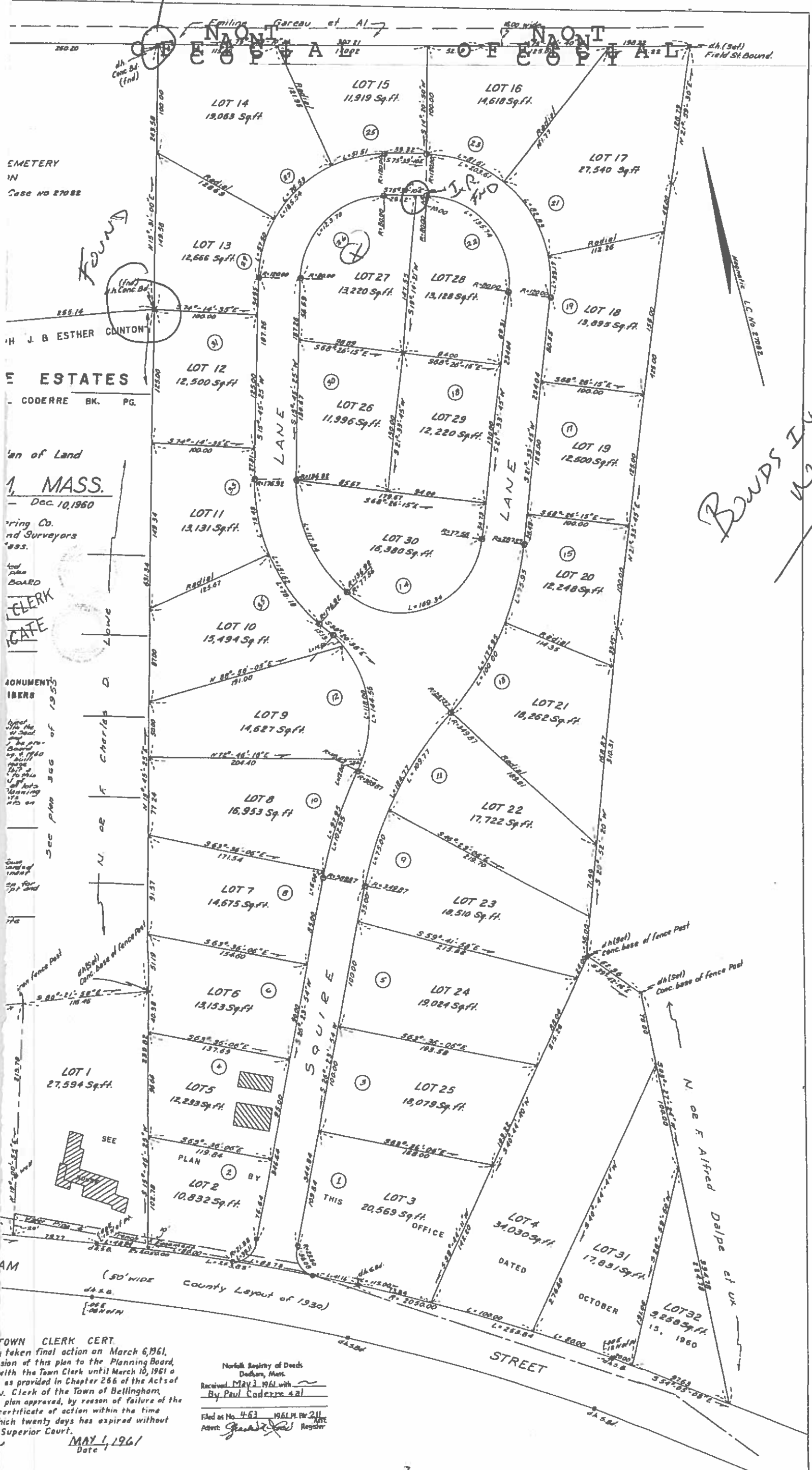


Found

Found

BONDS IN Subdivision
NOT SET



EMERY
IN
Case NO 27082

J. B. ESTHER CANTON
ESTATES
CODERRE BK. PG.

Plan of Land
1, MASS.
Dec. 10, 1960

Planning Co.
and Surveyors
Mass.
CLERK
DATE

MONUMENTS
LIBERS
See plan 355 of 1955

LOT 1 27,594 Sq. ft.
LOT 2 10,832 Sq. ft.
LOT 3 20,569 Sq. ft. OFFICE
LOT 4 34,030 Sq. ft.
LOT 5 12,293 Sq. ft.
LOT 6 13,153 Sq. ft.
LOT 7 14,675 Sq. ft.
LOT 8 16,953 Sq. ft.
LOT 9 14,627 Sq. ft.
LOT 10 15,494 Sq. ft.
LOT 11 13,131 Sq. ft.
LOT 12 12,500 Sq. ft.
LOT 13 12,666 Sq. ft.
LOT 14 19,063 Sq. ft.
LOT 15 11,919 Sq. ft.
LOT 16 14,618 Sq. ft.
LOT 17 27,540 Sq. ft.
LOT 18 13,895 Sq. ft.
LOT 19 12,500 Sq. ft.
LOT 20 12,248 Sq. ft.
LOT 21 18,262 Sq. ft.
LOT 22 17,722 Sq. ft.
LOT 23 18,510 Sq. ft.
LOT 24 19,024 Sq. ft.
LOT 25 18,079 Sq. ft.
LOT 26 11,996 Sq. ft.
LOT 27 13,220 Sq. ft.
LOT 28 13,128 Sq. ft.
LOT 29 12,220 Sq. ft.
LOT 30 16,380 Sq. ft.
LOT 31 17,891 Sq. ft.
LOT 32 9,258 Sq. ft.

TOWN CLERK CERT.
I taken final action on March 6, 1961,
in relation to this plan to the Planning Board,
with the Town Clerk until March 10, 1961 or
as provided in Chapter 266 of the Acts of
the Commonwealth of Massachusetts, in the
office of the Town Clerk of Bellingham,
Massachusetts, plan approved, by reason of failure of the
certificate of action within the time
which twenty days has expired without
Superior Court.
MAY 1, 1961
Date

North Attle Registry of Deeds
Dorham, Mass.
Received May 3, 1961 with
By Paul Coderre 421
Filed on No. 4-63 1961, P. 211
Attest: [Signature] Register

STREET